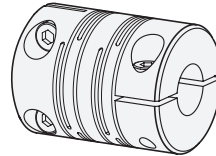
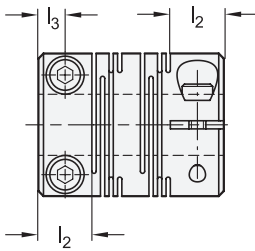


ROSTFREI®
Inox
Stainless
Steel

2 Bore code

B Without keyway



1

3

d₁	d₂ - d₃ H8 recommended shaft tolerance h7					
12	4-4	4-5	5-5	-	-	-
16	5-5	5-6	6-6	-	-	-
20	5-5	5-6	5-8	6-6	6-8	8-8
25	6-6	6-8	6-10	8-8	8-10	10-10
32	10-10	10-12	12-12	-	-	-

d₁	d₄	l₁	l₂ recommended shaft insertion depth	l₃	l₄	Tightening torque of the screw in Nm ≈
12	M 2	18,5	5	2,5	4	0,5
16	M 2,5	23	6,5	3,25	5	1
20	M 2,5	26	7,5	3,75	6,5	1
25	M 3	31	8,5	4,25	9	1,5
32	M 4	41	12	6	11	2,5

Aluminum							
d ₁	Rated torque in Nm	Max. speed (min ⁻¹)	Moment of inertia in kgm ²	Static torsional stiffness in Nm/rad	Max. shaft misalignment		
					Lateral in mm	Axial in mm	Angular in °
12	0,4	52.000	$7,8 \times 10^{-8}$	45	0,1	± 0,3	2
16	0,5	39.000	$3,4 \times 10^{-7}$	80	0,1	± 0,4	2
20	1	31.000	$9,1 \times 10^{-7}$	170	0,1	± 0,4	2
25	2	25.000	$2,6 \times 10^{-6}$	380	0,15	± 0,5	2
32	4	19.000	$9,7 \times 10^{-6}$	500	0,15	± 0,5	2

Stainless steel							
d ₁	Rated torque in Nm	Max. speed (min ⁻¹)	Moment of inertia in kgm ²	Static torsional stiffness in Nm/rad	Max. shaft misalignment		
					Lateral in mm	Axial in mm	Angular in °
12	0,3	52.000	$2,2 \times 10^{-7}$	64	0,1	± 0,2	2
16	0,5	39.000	$9,0 \times 10^{-7}$	85	0,1	± 0,3	2
20	1	31.000	$2,5 \times 10^{-6}$	250	0,1	± 0,3	2
25	2	25.000	$7,1 \times 10^{-6}$	330	0,15	± 0,4	2
32	3,5	19.000	$2,7 \times 10^{-5}$	850	0,15	± 0,5	2

Specification



- Aluminum **AL**
 - Anodized, natural color
 - Temperature resistant up to 150 °C
 - Socket cap screws DIN 912
- Stainless steel AISI 303 **NI**
 - Temperature resistant up to 200 °C
 - Socket cap screws DIN 912
 - Stainless steel AISI 304Cu
- ISO Fundamental Tolerances → Page 2151
- Stainless Steel Characteristics → Page 2166
- RoHS

On request

- Bore with keyway

Information

Beam couplings GN 2246 transmit angle positions and torques with extreme precision and no backlash. They are manufactured of a single piece and offer high torsional stiffness thanks to the alternating slits. The clamping hubs make beam couplings very easy to assemble.

They are used in applications where precise position and movement transmission is required, such as in the drive systems of position measuring systems and in test benches.

The stainless steel version can also be used in environments requiring high corrosion resistance, such as in medical technology (CAT scanners) and food-processing equipment (confectionary machines).

see also...

- Assembly Instructions on Couplings → Page 1694
- Technical Information on Couplings → Page 1696
- Bellows Couplings GN 2244 → Page 1688
- Elastomer Jaw Couplings GN 2240 (with Clamping Hub) → Page 1680

How to order

1	d ₁
2	Bore code
3	d ₂ - d ₃
4	Material

GN 2246-32-B 10-12-AL