



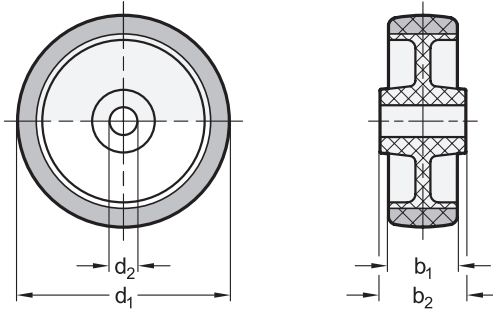
elesa
Original design RE.C6

2 Bearing type

G Friction bearing

3 Type

A Wheel without bracket



1

d ₁ Wheel Ø	b ₁	b ₂	d ₂	Max. dynamic load capacity in N
40	18	21	8	400
50	18	22	8	550
60	24	28	8	700

Specification

Wheel tread

- Thermoplastic polyurethane (TPU)
- Injection molded
- Red
- Hardness 55 Shore D

Wheel core

Plastic, polyamide (PA)

Operating temperature -5 °C to +40 °C

RoHS

Wheels GN 22880 are used in industrial and public indoor areas for moving light materials and equipment, for example.

The wheel tread offers low rolling resistance and high elasticity as well as good wear and tearing resistance. It is good at overcoming obstacles.

see also...

	Page
GN 22880 Light Duty Casters (Light Version)	QVX
GN 22880 Light Duty Casters (Double Wheel Version)	QVX
GN 22870 Wheels (Wheel Tread Rubber, Wheel Core Polypropylene)	QVX
GN 22882 Wheels (Wheel Tread Polyurethane, Orange)	QVX
GN 22884 Wheels (Wheel Tread Polyurethane, Blue)	QVX

Technical Information

Usage Conditions of Wheels and Casters	QVX
Technical Information for Wheels and Casters	QVX
Plastic Characteristics	QVX

How to order

GN 22880-60-G-A

1	d ₁
2	Bearing type
3	Type

