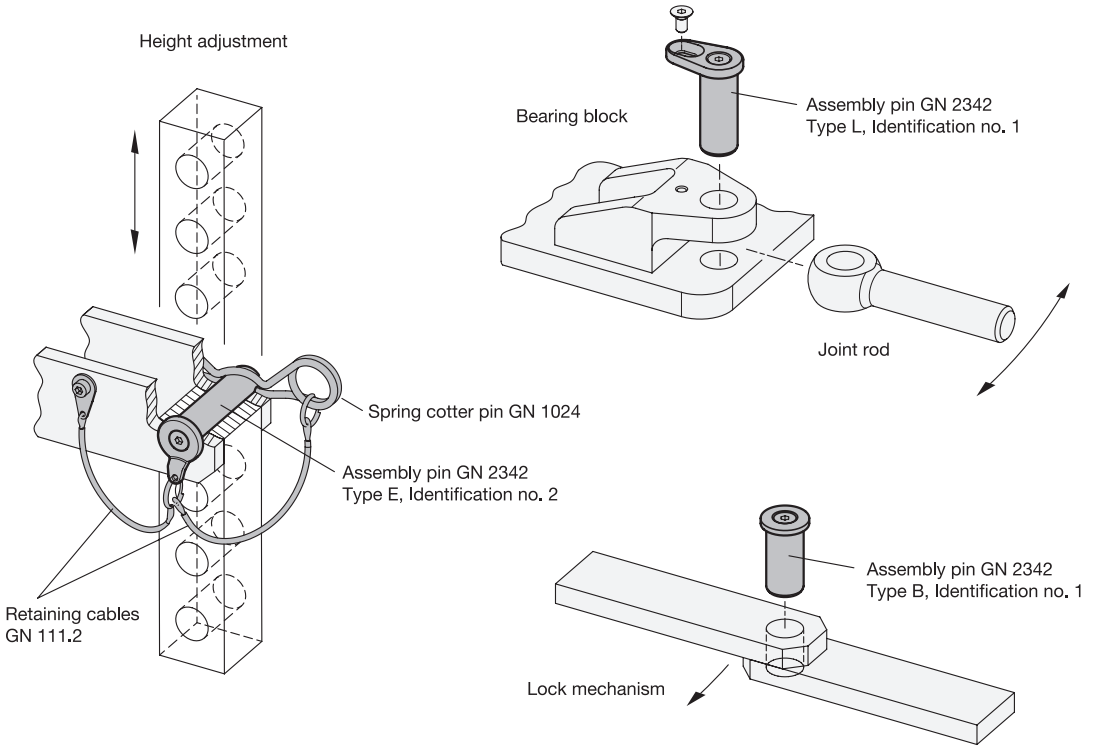


**Application example**



**Specification**

- Assembly pin  
Stainless steel AISI 304 **NI**
- Washer  
Stainless steel
  - Type B: turned AISI 304
  - Type E: metal injection molded AISI 316LHC
  - Type L: sintered AISI 316LHC
- Countersunk screw DIN 7991
  - Stainless steel AISI 304
  - Not removable loctited
- *Stainless Steel Characteristics* → Page 2166
- **RoHS**

**Accessory**

- Ball Chains GN 111 / GN 111.5 → Page 1174
- Retaining Cables GN 111.2 → Page 1176
- Spiral Retaining Cables GN 111.4 → Page 1175
- Key Rings GN 111.3 → Page 1178

**Information**

Stainless steel assembly pins GN 2342 are characterized by their use in diverse applications. Depending on the requirement there are three washer types to choose from, which place the assembly pin in an axial position in its insertion direction. With the washer with eyelet (Type E) the assembly pin and a corresponding GN 1024 spring cotter pin can be secured to prevent loss using a retaining cable or ball chain. The washer with mounting shackle (Type L) simultaneously acts as loss protection and anti-rotation protection.

Assembly pins according to identification no. 2 are secured against falling out via a transverse drill hole which is aligned to the GN 1024 spring cotter pin.

see also...

- *List of Lock Pin Types* → Page 1008 ff.
- *Stainless Steel Retaining Washers GN 2344* → Page 1030

**How to order**

1	Material
2	d <sub>1</sub>
3	l <sub>1</sub>
4	Type
5	Identification no.

**GN 2342-NI-10-24-B-2**

