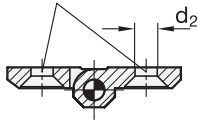
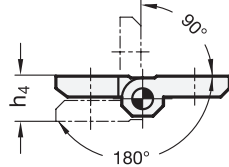


Type A

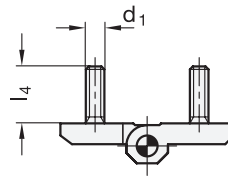
Bores for countersunk screw  
DIN 7991



Swiveling range



Type C



**4 Type**

- A** 2x2 bores for countersunk screws
- C** 2x2 threaded studs

**2** **3**

l <sub>1</sub>	l <sub>2</sub>	Material						d <sub>1</sub>	d <sub>2</sub>	d <sub>3</sub>	h <sub>1</sub>	h <sub>2</sub>	h <sub>3</sub>	h <sub>4</sub> +0,5	l <sub>3</sub>	l <sub>4</sub>	m <sub>1</sub>	m <sub>2</sub>		
		Type A			Type C														ZD	NI, A4, AL
30	30	ZD	NI	A4	AL	-	-	-	4,3	3	7,5	4	4,3	8,6	10,7	10,7	-	-	18	18
40	40	ZD	NI	A4	AL	ZD	NI	M 5	5,3	4	9	5	5,5	11	14	16	12	11	25	25
50	50	ZD	NI	A4	AL	ZD	NI	M 6	6,4	6	11,5	6	6,5	13	18,5	21	12	13	30	30
60	60	ZD	NI	A4	AL	ZD	NI	M 8	8,3	8	15	8	8,5	17	21,5	26	14	17	36	36

**Specification**

**1** **5**

- Zinc die casting **ZD**
  - Powder coated
  - Black, RAL 9005, textured finish **● SW**
  - Silver, RAL 9006, textured finish **● SR**
  - Chrome-plated **● CR**
- Stainless steel
  - AISI CF-8 **NI**
  - German Material No. 1.4408 **A4**
  - Matte shot-blasted **GS**
- Aluminum **AL**
  - Anodized, natural color **● EL**
- Pin
  - Stainless steel AISI 303 for ZD
  - Stainless steel AISI 316L for AL, NI and A4
- Threaded stud (Type C)
  - Stainless steel AISI 316 for ZD and AL
  - Stainless steel AISI CF-8 for NI, casted „in one piece“

- [Load Rating Information](#) → Page 2121 ff.
- [Stainless Steel Characteristics](#) → Page 2166
- [RoHS](#)

**Information**

Hinges GN 237 are characterized by their compact and stable design. The various material and surface choices in combination with two mounting types enable very specific applications.

see also...

- [List of Hinge Types](#) → Page 1284 ff.
- [Hinges GN 337 \(Detachable\)](#) → Page 1378
- [Hinges GN 235 \(Adjustable\)](#) → Page 1374
- [Hinges GN 238 \(Adjustable\)](#) → Page 1372
- [Hinges GN 237.1 \(Plastic\)](#) → Page 1296
- [Plates with Tapped Holes GN 2372 \(Stainless Steel\)](#) → Page 1351
- [Spacer Plates GN 2370 \(Stainless Steel\)](#) → Page 1350
- [Rubber Bumper Stops GN 2374](#) → Page 1298

**How to order**

<b>1</b>	Material
<b>2</b>	l <sub>1</sub>
<b>3</b>	l <sub>2</sub>
<b>4</b>	Type
<b>5</b>	Finish

**GN 237-ZD-60-60-A-SR**