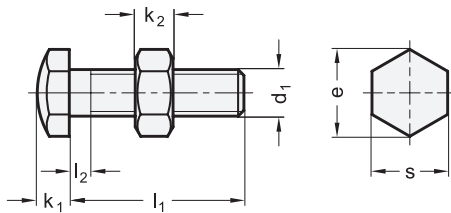
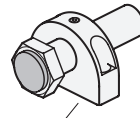
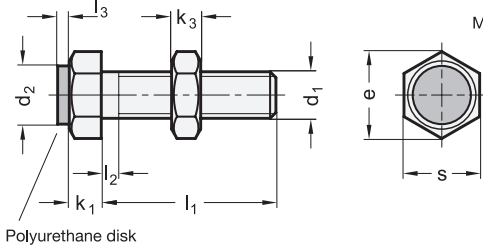


Type AK



Type BK



Mounting block GN 412.1



3 Type

AK Locating surface with rounded end, hardened

BK Locating surface with Polyurethane disk

1

2

d_1	l_1 Type AK										e	k_1	k_2	l_2 max.	s
M 3	10	15	20	25	30	-	-	-	-	-	6,4	2	2,4	1,5	5,5
M 4	10	15	20	25	30	35	40	-	-	-	8,1	2,8	3,2	2,1	7
M 5	10	15	20	25	30	35	40	50	-	-	9,2	3,5	4	2,4	8
M 6	15	20	25	30	35	40	50	-	-	-	11,5	4	5	3	10
M 8	15	20	25	30	35	40	50	60	70	80	15	5,5	6,5	3,7	13
M 10	30	35	40	50	60	70	80	-	-	-	19,6	7	8	4,5	17
M 12	30	35	40	50	60	70	80	-	-	-	21,9	8	10	5,2	19
M 16	50	60	70	80	-	-	-	-	-	-	27,7	10	13	6	24

1

2

d_1	l_1 Type BK								d_2	e	k_1	k_3	l_2 max.	l_3	s
M 4	15	20	25	30	35	40	-	5	8,1	2,8	2,4	2,1	1,5	7	
M 5	15	20	25	30	35	40	-	6	9,2	3,5	3,2	2,4	1,5	8	
M 6	20	25	30	35	40	45	50	8	11,5	4	3,6	3	2	10	
M 8	20	25	30	35	40	45	50	10	15	5,5	5	3,7	2	13	
M 10	20	25	30	35	40	45	50	13	19,6	7	6	4,5	2	17	

Specification

- Screw
Steel, property class 5.8
- Type AK
Blackened
Locating surface, hardened (HRC 45)
- Type BK
Nickel plated
Polyurethane disk, 90 Shore
- Hexagon nut
Steel zinc plated, blue passivated
- Strength Values of Screws → Page 2152
- RoHS

Information

Setting bolts GN 251 can be used as as an end stop as well as for support.

The version with polyurethan disk (Type BK) functions as damping element or protection for sensitive surfaces.

see also...

- Mounting Blocks GN 412.1 → Page 956
- Setting Bolts GN 251.6 (with Retaining Magnet) → Page 2066

How to order

GN 251-M8-40-BK

1 d_1 2 l_1

3 Type