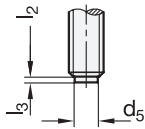


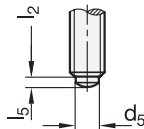
**4 Type**

- MS** Brass tip
- KU** Plastic tip
- DZ** Hardened tip
- ZK** Spherical end
- KD** Spherical end with thrust pad POM
- RD** Spherical end with thrust pad NBR
- KS** Conical end hardened

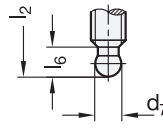
Type MS



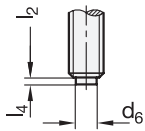
Type DZ



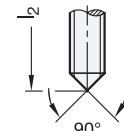
Type ZK



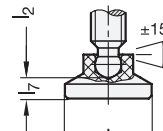
Type KU



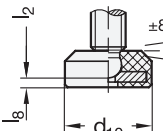
Type KS



Type KD



Type RD



1

2

3

$l_1$	$d_1$	$l_2$						$d_3$	$d_4$	$d_5$	$d_6$	$d_7 +0,05$	$d_8$	$d_{10}$
30	M 6	16	20	25	32	40	50	10	13	4	3,5	4,5	15	14
45	M 6	16	20	25	32	40	50	10	13	4	3,5	4,5	15	14
63	M 8	20	25	32	40	50	63	13,5	17,5	6	5	6,1	18	19
63	M 10	20	25	32	40	50	63	13,5	17,5	8	6,5	7,8	21	25

$l_1$	$d_1$	$h_1$	$h_2$	$h_3$	$h_4$ Stroke	$l_3$	$l_4$	$l_5$	$l_6$	$l_7$	$l_8$
30	M 6	24,5	4	31	3,5	1	1,3	1,8	5,1	3,6	1,9
45	M 6	24,5	4	35	3,5	1	1,3	1,8	5,1	3,6	1,9
63	M 8	31	6,5	45	4	1,5	1,6	2,5	6,2	4,2	3,2
63	M 10	31	6,5	45	4	2	1,9	3,5	7,3	4,3	3



## Specification

5

### Handle

Zinc die casting  
Powder coated

- Black, RAL 9005, textured finish
- Orange, RAL 2004, textured finish  
Only type MS / KU / DZ / ZK / KD
- Red, RAL 3000, textured finish
- Silver, RAL 9006, textured finish  
Only type MS / KU / DZ / ZK / KD

- B
- O
- R
- S

### Insert / Retaining screw

Steel, blackened

- Property class 5.8
- Conical tip hardened for type KS

### Tip

- Brass for type MS
- Plastic, Polyacetal (POM) for type KU
- Steel, hardened (oval point) for type DZ

### Thrust pad

- Plastic, Polyacetal (POM) for type KD
- Operating temperature up to 80 °C
- Black, matte finish
- Acrylonitrile butadiene rubber (NBR) for type RD
- Hardness 85 ±5 Shore A
- Operating temperature up to 120 °C
- Black, matte finish
- Disk stainless steel AISI 304

RoHS

### On request

- Handle in other colors
- Flat handle (GN 302)

Adjustable hand levers GN 306 are used in devices for tool-free clamping, pressing or fixation. To achieve a convenient clamping position, the handle can be lifted by the dimension  $h_4$  and then swiveled. Upon releasing, it snaps back into the serration under spring pressure.

The tip of types MS / KU helps prevent pressure marks or damage to the clamped workpiece. The conical end of type KS allows for simple positioning or centering in a corresponding mounting hole. The rounded tip of type DZ provides a pointed contact and angular compensation.

The thrust pad of types KD / RD enlarges the contact surface to protect surfaces from damage. In combination with the spherical end, the thrust pad forms a ball joint that adapts to uneven clamping surfaces. It also prevents the rotational movement from being transferred to the clamping surface during clamping.

The rubber coating of type RD also prevents slipping, provides a dampening effect and reduces noise. In this version, the disk is encased in vulcanized rubber to ensure high load capacity and dimensional stability.

The thrust pads are removable and are supplied unattached.

see also...

	Page
GN 306 Adjustable Hand Levers (Insert Stainless Steel, with Special Tip)	QVX
GN 300 Adjustable Hand Levers (Insert Steel, without Special Tip)	QVX

### Technical Information

	Page
Strength Values of Screws	QVX
Plastic Characteristics	QVX

### How to order

1	$l_1$
2	$d_1$
3	$l_2$
4	Type
5	Color

**GN 306-45-M6-20-DZ-R**

