

GN 321

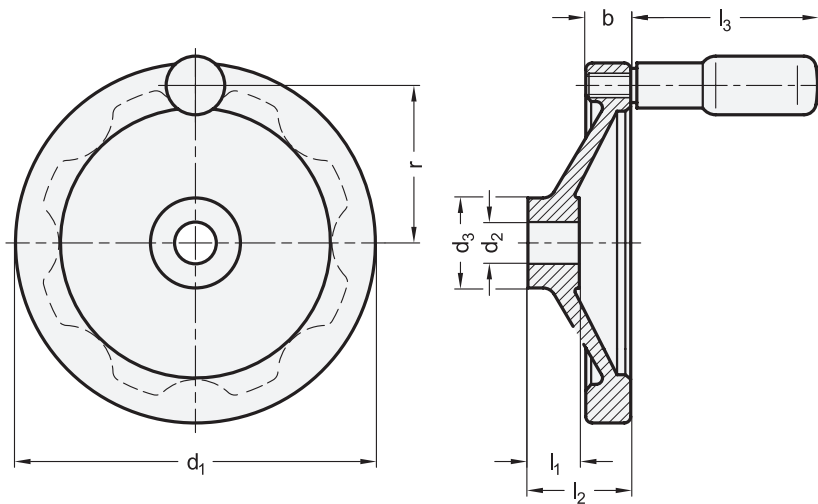
Plain, Rim Polished

GN 323

Black, Powder Coated

Disk Handwheels

Aluminum



2 Bore code:

- B Without keyway
- K With keyway DIN 6885-1 P9

4 Type

- A Without handle
- R With revolving handle

¹ d ₁	³ d ₂ H7 Bore		b	d ₃	l ₁	l ₂ ≈	l ₃ ≈	r	Ø Handle GN 798
80	10	12	13	26	16	26	44	33,5	16
100	10	12	14	28	17	30	58,5	42,5	18
125	12	14	15	31	18	33	61,5	54	22
140	14	16	16,5	36	19	36	76,5	61	24
160	14	16	18	36	20	39	76,5	71	24
200	18	20	20,5	45	24	45	86,5	89	25
250	22	26	23	48	28	51	86,5	113	25

Specification

Wheel body

Aluminum

- Hub machined
- Rim
 - Turned on all sides
 - Radial and axial runout < 0,4

• GN 321

- Rim high-polished
- Unmachined body matt shot-blasted

• GN 323

- Completely powder coated
- Black, textured finish

Revolving handle GN 798

Plastic, Polyamide (PA)

- Black, matte finish
- Spindle steel
- Zinc plated, blue passivated

RoHS

Disk handwheels GN 321 / GN 323 have recessed grips at their back.

see also...

	Page
GN 321.4 Safety Handwheels (with Friction Bearing)	QVX
GN 321.5 Safety Handwheels (with Needle Bearing)	QVX
GN 321.4 Safety Handwheels (with Friction Bearing)	QVX
GN 321.5 Safety Handwheels (with Needle Bearing)	QVX
GN 923 Disk Handwheels (Aluminum, Powder Coated)	QVX

Technical Information

Keyways P9 DIN 6885-1	QVX
Cross holes GN 110	QVX
ISO Fundamental Tolerances	QVX

Accessory

GN 184 Countersunk Washers (for Axial Fastening)	QVX
--	-----

How to order (Rim Polished)

¹ ² ³ ⁴
GN 321-160-K16-A

1	d ₁
2	Bore code
3	d ₂
4	Type

How to order (Powder Coated)

¹ ² ³ ⁴
GN 323-125-B12-R

1	d ₁
2	Bore code
3	d ₂
4	Type