

**4 Type**

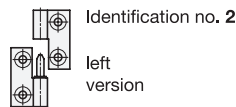
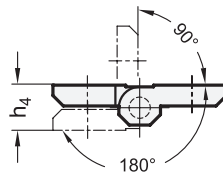
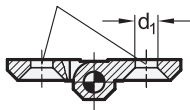
**A** 2x2 bores for countersunk screws

**5 Identification no.**

- 1 Fixed bearing (pin) right
- 2 Fixed bearing (pin) left

**Swiveling range**

Bores for countersunk screw DIN 7991



**2**

**3**

$l_1$	$l_2$	$d_1$	$d_2$	$h_1$	$h_2$	$h_3$	$h_4 +0,5$	$l_3$	$m_1$	$m_2$
40	40	5,3	4	9	5	5,5	11	16	25	25
50	50	6,4	6	11,5	6	6,5	13	21	30	30
60	60	8,3	8	15	8	8,5	17	26	36	36

**Specification**

**1**

**6**

- Zinc die casting **ZD**
- Powder coated
- Black RAL 9005, textured finish **● SW**
- Silver RAL 9006, textured finish **● SR**
- Stainless steel AISI CF-8 **NI**
- Matte shot-blasted **GS**
- Pin
- Stainless steel AISI 303
- Washer
- Plastic
- Load Rating Information → Page 2121
- Stainless Steel Characteristics → Page 2166
- RoHS

**Information**

see also...

- List of Hinge Types → Page 1284 ff.
- Hinges GN 237 (not Detachable) → Page 1292
- Stainless Steel Spacer Plates GN 2370 → Page 1350
- Stainless Steel Plates GN 2372 → Page 1351
- Rubber Bumper Stops GN 2374 → Page 1298

**How to order**

<b>1</b>	Material
<b>2</b>	$l_1$
<b>3</b>	$l_2$
<b>4</b>	Type
<b>5</b>	Identification no.
<b>6</b>	Color / Finish

**GN 337-ZD-40-40-A-1-SR**