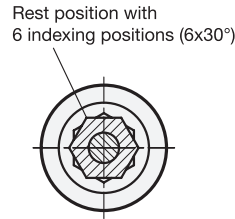
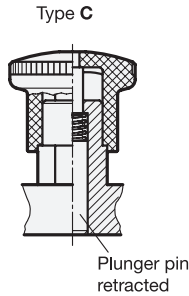
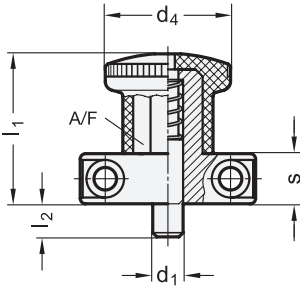


- 3 Type**
B Without rest position
C With rest position
- 4 Identification no.**
1 Mounting from the front
2 Mounting from the back



1 d ₁ Pin $0_{-0,06}$ Bore $+0,05$ $+0,1$	2 b	d ₂	d ₃	d ₄	h	k	l ₁	l ₂ min.	l ₃	l ₄	s	A/F	t	Spring load in N ≈	
														Initial	End
5	35	4,3	M 4	25	26	25	32	6	6	14	12	12	10	5	15
6	35	4,3	M 4	25	26	25	32	6	6	14	12	12	10	5	15
8	47	5,3	M 5	33	34	35	39	10	10	18	14	17	12	9	35
10	47	5,3	M 5	33	34	35	39	10	10	18	14	17	12	9	35

Specification

Guide

- Zinc die casting
- Powder coated
- Black, textured finish

Plunger pin

Stainless steel AISI 303

Knob

- Plastic, Polyamide (PA)
- Black, matte
- Not removable

Pressure spring

Edelstahl 1.4310

RoHS

Technical Information	Page
Stainless Steel Characteristics	QVX
Load Rating Information	QVX
Plastic Characteristics	QVX

The outstanding feature of the indexing plungers GN 412 is their compact design. They are mounted either from the front with cylinder head screws or from the back through threads. In Type C, the knob can be turned by 30° after retracting the indexing pin, holding it in the „retracted“ position by means of the indexing lock.

The dimensions and connection measurements match the combination with GN 412.1 mounting blocks in connection with positioning bushings GN 412.2 or GN 412.3.

see also...

	Page
List of Indexing Plunger Types	QVX
GN 412.1 Mounting Blocks	QVX
GN 417 Indexing Plungers (without Rest Position)	QVX
GN 417 Indexing Plungers (with Rest Position)	QVX
GN 412.2 GN 412.4 Positioning Bushings	QVX
GN 412.3 GN 412.5 Positioning Bushings (with Ramping Cone)	QVX

How to order

1	d ₁
2	b
3	Type
4	Identification no.

GN 412-6-35-B-1