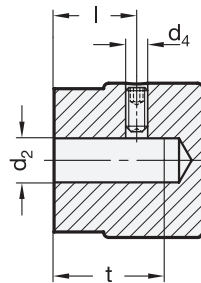


0 resp. arrow
opposite grub screw



3 Type

- A** With arrow
- B** Neutral, without arrow or scale
- S** With standard scale 0...9 20 graduations

1

2

d ₁	d ₂ H8 Bore		d ₃	d ₄	h ₁	h ₂	Length l	t min.
24	B 5	B 6	22	M 4	24	8	12	18
28	B 6	B 8	26	M 4	27	9	13	20

Specification

- Stainless steel AISI 304
Matte shot-blasted **MT**
- Scale (Type S) and arrow (Type A)
Engraved with laser precision
- Stainless steel grub screw DIN 916
with internal hexagon and serrated point
- *ISO Fundamental Tolerances* → Page 2151
- *Stainless Steel Characteristics* → Page 2166
- RoHS

On request

- Special graduations
see „How to Order Graduations“
→ Page 326

4

Information

Scale and arrow on the stainless steel control knobs GN 436.1 are indelibly marked and easily legible.

Besides the standard scale (Type S) the control knobs can be supplied with any type of graduation.

Regarding design, numbering run, numbering position and numbering sequence of the scale please see the layout for scale knobs on the order sheet „How to Order Graduations“ → Page 326

How to order

GN 436.1-28-B6-S-MT

1	d ₁
2	d ₂
3	Type
4	Finish