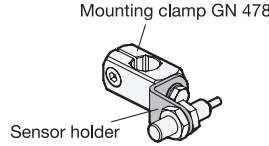
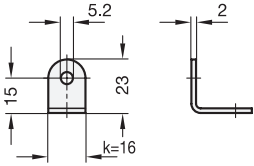
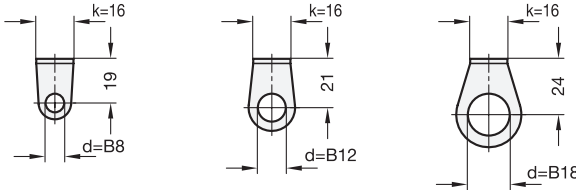


Swivel width k=16

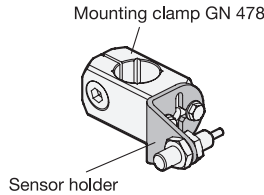
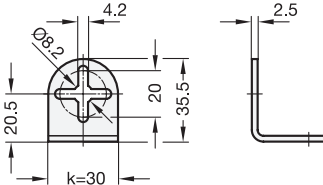


ROSTFABRIK Rost frel
Inox
Stainless
Steel

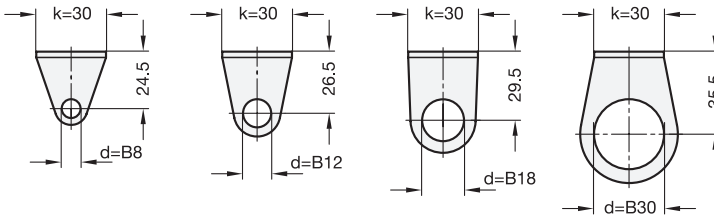
Front views for different bore Ø d



Swivel width k=30



Front views for different bore Ø d



Specification

- Stainless steel AISI 303
Matte shot-blasted
- [Stainless Steel Characteristics](#) → Page 2166
- RoHS

Information

The stainless steel sensor holders GN 479 are designed for holding sensors attached with two lock nuts.

The attachment bore matches the central thread of attachment mounting clamps GN 478 and attachment swivel mountings clamps GN 484. For k=30, the cross-shaped slotted holes provide extra adjustability and allow the use of two mounting screws (not included parts of the order).

see also...

- [Attachment Mounting Clamps GN 478](#) → Page 1795
- [Attachment Mounting Clamps GN 484](#) → Page 1799
- [More Fixing Elements for Sensors:](#)
 - [GN 176](#) → Page 1809
 - [GN 177.1](#) → Page 1806
 - [GN 271.4 / GN 272.4 / GN 273.4](#) → Page 1776 ff.

How to order

GN 479-B12-16

1	d
2	k