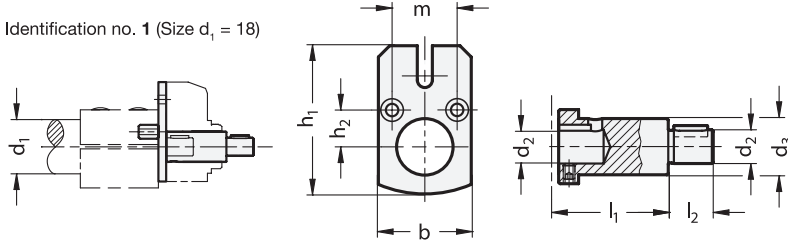
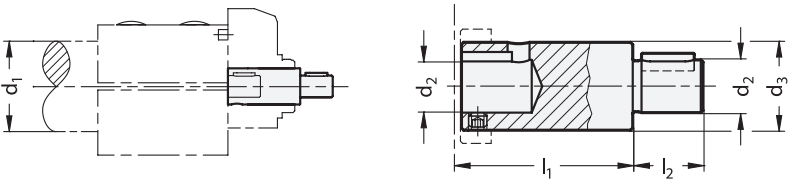


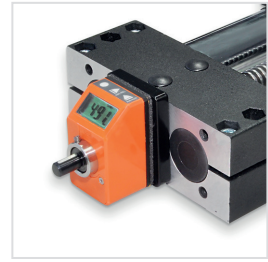
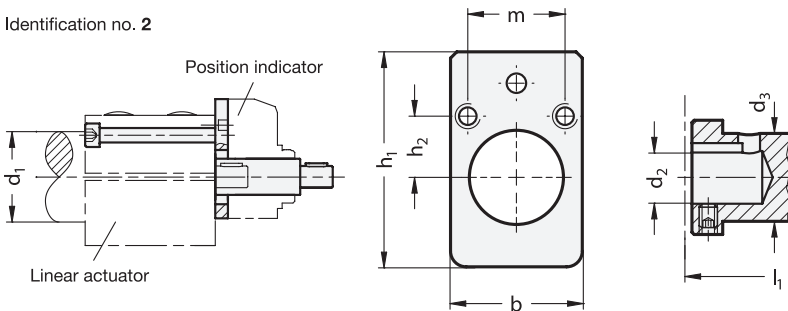
Identification no. 1 (Size  $d_1 = 18$ )



Identification no. 1 (Size  $d_1 = 30...60$ )



Identification no. 2



- 3 Identification no.**
- 1 For mechanical position indicators GN 953 / GN 954 / GN 955
  - 2 For electrical position indicators GN 9053 / GN 9054

<b>d<sub>1</sub></b> Ø Linear actuator	<b>d<sub>2</sub></b> f7	<b>b</b>	<b>d<sub>3</sub></b>	<b>l<sub>1</sub></b>		<b>l<sub>2</sub></b>	<b>h<sub>1</sub></b>	<b>h<sub>2</sub></b>	<b>m</b>	for position indicator
				Id. no. 1	Id. no. 2					
18	6	27	10	30	-	16	38,5	10	20	GN 955
30	8	40	14	35	44	15	54,5	15	30	GN 954 / GN 9054
40	12	50	20	39	51	16	72,5	19,5	39	GN 953 / GN 9053
50	12	60	20	39	51	17	72,5	23	46	GN 953 / GN 9053
60	14	70	20	39	51	18	72,5	27,5	55	GN 953 / GN 9053

**Specification**

- Adaptor shaft  
Steel  
Blackened
- Torque support  
Aluminum  
Black anodized
- ISO Fundamental Tolerances → Page 2151
- RoHS

**Accessory**

- Position indicators and handwheels have to be ordered separately.

**Information**

The installation kits GN 491.1 are required for the attachment of a position indicator to double tube linear actuators. They consist of an adaptor shaft and, depending on the position indicator, a torque support including fixing screws.

Mechanical position indicators GN 953 / GN 954 / GN 955 must be ordered so that the counter is aligned with the rising of the trapezoidal thread spindle.

For the position indicators GN 9053 / GN 9054 the respective rising is set at the position indicator for every programming.

see also...

- Position Indicators GN 953 / GN 954 / GN 955 → Page 396 ff.
- Position Indicators GN 9053 / GN 9054 → Page 402 / 404

<b>How to order</b>	<b>1</b> $d_1$ (Ø Linear actuator)
	<b>2</b> $d_2$
	<b>3</b> Identification no.
<b>GN 491.1-30-8-1</b>	

3.1  
3.2  
3.3  
3.4  
3.5  
3.6  
3.7  
3.8  
3.9

