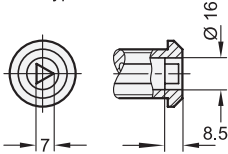


**Rostfrei**  
Inox  
Stainless  
Steel

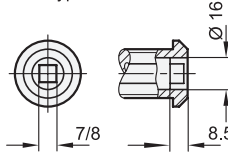
**2 Type**

- DK** With triangular spindle
- VK7** With square spindle
- VK8** With square spindle
- SCH** With slot
- VDE** With double bit

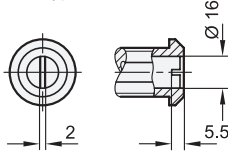
**Type DK**



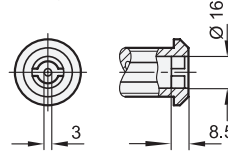
**Type VK7 / VK8**



**Type SCH**



**Type VDE**



**3**

**4**

<b>h<sub>1</sub></b>	<b>Latch arm distance A</b>															<b>h<sub>2</sub></b>	<b>s max.</b>
30	18	22	26	30	32	34	36	38	40	42	46	50	52	62	62	40	20
50	38	42	46	50	52	54	56	58	60	62	66	70	72	82	82	60	40

**Specification**

- Lock housing  
Stainless steel **1**  
- AISI 316 (at h<sub>1</sub> = 30)  
- AISI 303 (at h<sub>1</sub> = 50)  
- Plain **BL**
- Latch arm  
Stainless steel AISI 304
- Other parts  
Stainless steel AISI 303
- Protection class IP 65
- IP Protection Classes → Page QVX
- Stainless Steel Characteristics → Page QVX
- RoHS

**Accessory**

- Socket Keys GN 119.2 → Page QVX
- Protective Caps GN 120 → Page QVX
- Opening Handles GN 120.1 → Page QVX
- Protective Guide Plates GN 120.2 → Page QVX
- Internal Cabinet Handles GN 120.3  
→ Page XYZ
- Sheet Metal Punches GN 123 → Page XYZ

**Information**

Latches GN 515 are identical to standard latches GN 115 except for the extended housing. They are operated with a rotation limited to 90°, which moves the latch arm into the locked position behind the frame. The bevels of the latch arm ease the closing of the door. Thanks to the stainless steel material, the latches are optimally suited for use in corrosive environments.

By installing latch arms with different bend profiles, the latch distance A can be varied from 18 to 82 mm depending on the housing height h<sub>1</sub>, while the extended housing is suitable for a door thickness s up to 40 mm. Latches GN 515 are supplied with loosely enclosed latch arm.

see also...

- Construction and Assembly Instructions → Page XYZ

**How to order**

**GN 515-NI-SCH-30-42-BL**

<b>1</b>	<b>Material</b>
<b>2</b>	<b>Type</b>
<b>3</b>	<b>h<sub>1</sub></b>
<b>4</b>	<b>Latch arm distance A</b>
<b>5</b>	<b>Finish</b>

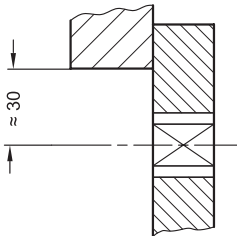
3.1  
3.2  
3.3  
3.4  
3.5  
3.6  
3.7  
3.8  
3.9





**Construction and Assembly Instructions**

**Hole distance**



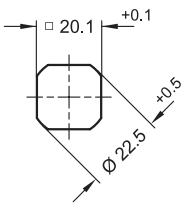
For installation, set a hole in the door, cover or hatch as shown in the outline drawing.

The required installation hole in the door leaf, is usually generated by punching or laser machining in series production.

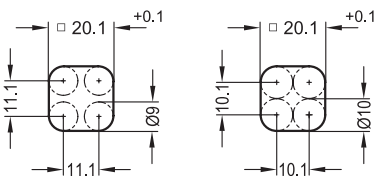
The installation hole diameter can also be created by drilling or milling as shown in the outline drawings.

When mounting the latches, care should be taken to ensure that the internal parts of the latch do not fall out of the housing when removing or mounting the hex head screw.

**Installation hole for punching or laser machining**



**Installation hole for drilling or milling**



**Structure**

