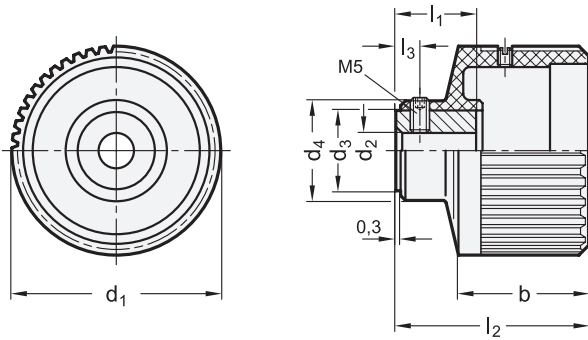




elesa  
Original design IZN. GXX



d <sub>1</sub>	d <sub>2</sub> H7	d <sub>3</sub>	d <sub>4</sub>	b	l <sub>1</sub>	l <sub>2</sub>	l <sub>3</sub>	For position indicators	
								GN 000.8 Size	GN 000.3 Size
60	B 10	22	27	38	22	52,5	6	42	-
80	B 12	26	33	40	24	60	6	60	60

## Specification

### Knob

- Plastic, Polyamide (PA)
- Glass fiber reinforced
- Operating temperature 0 °C to +100 °C
- Black, shiny finish

### Bushing

Steel, blackened

### Grub screw

Stainless Steel

RoHS

Hand knobs GN 526.8 have a recess in the hub to accept a position indicator GN 000.8 / GN 000.3.

### see also...

**GN 534.8** Hand Knobs Page QVX

### Technical Information

Installation Sequence GN 526.8 QVX

ISO Fundamental Tolerances QVX

Plastic Characteristics QVX

### Accessory

**GN 000.8** Position Indicators (Pendulum System, Analog Indication) QVX

**GN 000.3** Position Indicators (Pendulum System, Digital/Analog Indication) QVX

**GN 576** Hub Caps (for Control Knobs / Handwheels without Position Indicators) QVX

**GN 826** Clamping Elements (for Adjustable Spindles) QVX

### How to order

**GN 526.8-60-B10**

1 d<sub>1</sub>

2 d<sub>2</sub>



### Installation sequence

1. Install the position indicator to the spindle and fix it with the screw.
2. Turn the spindle to the starting point (0-position).
3. Move position indicator „by hand“ to the 0-position before mounting it.
4. Install the position indicator into the recess of the hub and fix it with a screw. Do not apply unnecessarily excessive torque to avoid deformation of the housing!
5. Rotate the handwheel and ascertain that the starting point of the spindle is aligned with the 0-position of the two pointers (GN 000.8) respectively pointer and counter (GN 000.3).  
Should that not be the case the screw has to be loosened and the position indicator adjusted. Tighten the screw again.