

**RUD**

**2 Type**

**R** With oval ring

d	h <sub>1</sub>	h <sub>2</sub>	h <sub>3</sub> ≈	h <sub>4</sub> ≈	k <sub>1</sub>	k <sub>2</sub>	k <sub>3</sub>	k <sub>4</sub> ≈	Nominal load capacity in t (WLL)
40	114	105	56	49	9	53	35	79	0,63
46	126	115	53	62	11	57	35	81	1,5
61	148	135	57,5	78,5	13	66	44	93	2,5
78	188	172	74	98	16	77	50	117,5	4
95	242	223	103,5	119,5	19	98	60	158	5
100	266	242	107	135	24	113	65	169,5	8

Specification

Eye ring

- Steel 1.6541
- Forged
  - High-tensile tempered
  - 100% electromagnetically crack tested to EN 1677-1
  - Powder coated, pink

Bearing case

- Steel 1.6541
- Forged
  - High-tensile tempered
  - 100% electromagnetically crack tested to EN 1677-1
  - Galvanically zinc plated

Weld-on flange

- Steel 1.6541
- High-tensile tempered
  - 100% electromagnetically crack tested to EN 1677-1

RoHS

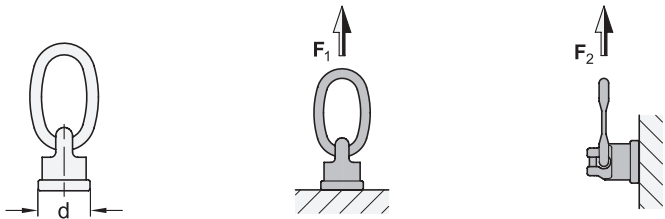
Load rings GN 5861 rotate by means of a ball bearing and are used with separate lifting gear and lashing equipment. They are welded to load-bearing equipment or directly onto the load itself and absorb loads in any direction. The large ring facilitates attachment.

The nominal load capacity is indicated on the ring. Load rings GN 5861 comply with the Machinery Directive 2006/42/EC and DGV rules GS-HM-36.

see also...	Page
GN 5860 Load Rings	QVX
GN 5862 Load Hooks	QVX

How to order	1 d
GN 5861-100-R	2 Type

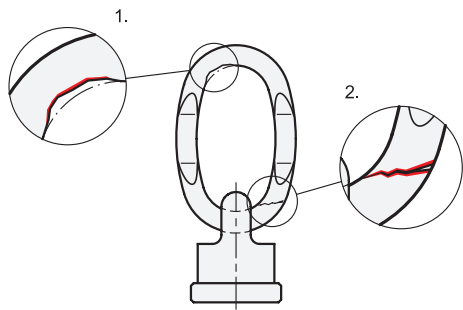
**Load Capacity**



Diameter <b>d</b>	Nominal load capacity in t (WLL)	<b>F<sub>1</sub></b> max. in t	<b>F<sub>2</sub></b> max. in t
40	0,63	0,63	0,63
46	1,5	1,5	1,5
61	2,5	2,5	2,5
78	4	4	4
95	5	6,7	5
100	8	10	8

The specified load values apply to an operating temperature range of –40 °C to +200 °C. Further information can be found in the operating instructions.

**Wear / Service Life / Safety Instructions**

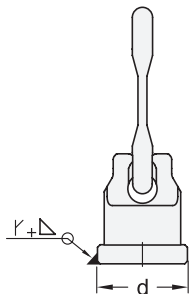


1. If the wear exceeds 10% of the cross-section, the lifting point is worn out and has reached the end of its service life.
2. If the load ring is bent or shows signs of damage or cracks, it is no longer safe to use.

In either case, replacement is required.

The information in the operating instructions must be complied with during installation, commissioning and use. It is included with the product and is available digitally at [ganternorm.com](https://ganternorm.com).

**Fastening / Welding Instructions**



Diameter <b>d</b>	Size of weld seam
40	a4
46	a5
61	HY 3 + a5
78	HY 3 + a6
95	HY 3 + a8
100	HY 3 + a10

The welding must be carried out by a certified welder in accordance with ISO 9606-1.