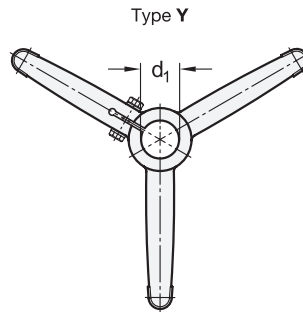
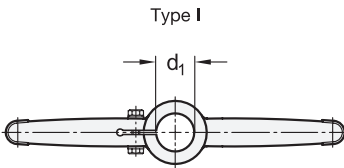
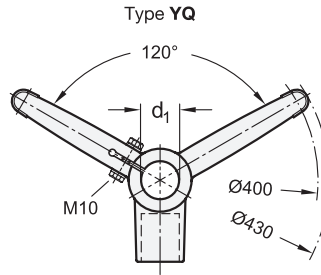
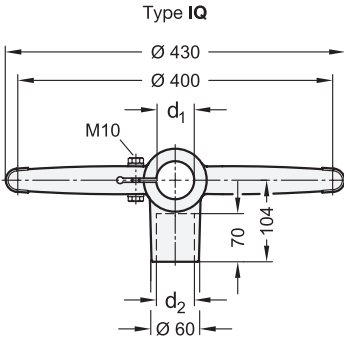


elesa
Original design BAS2 / BAS3 / BAG2



1 Type

- I** Straight
- IQ** Straight for cross connection
- Y** Y-shaped
- YQ** Y-shaped for cross connection



2

3

d₁		d₂	
Bore	Tube nominal size DIN EN 10220 / EN 10255	Bore Type IQ / YQ	Tube nominal size DIN EN 10220 / EN 10255
B 42,4	1 1/4"	B 42,4	1 1/4"
B 48,3	1 1/2"	B 42,4	1 1/4"
B 48,3	1 1/2"	B 48,3	1 1/2"
B 60,3	2"	B 42,4	1 1/4"
B 60,3	2"	B 48,3	1 1/2"

Specification

Base

- Plastic, polyamide (PA)
- Glass fiber reinforced
- Operating temperature -30 °C to +100 °C
- Black, matte finish

Clamping set

- Stainless steel AISI 304
- Hex head screws DIN 931
- Hex nuts DIN 934
- Washers DIN 125

RoHS

Technical Information

Page

- Plastic Characteristics QVX
- Stainless Steel Characteristics QVX

Support bases GN 6470 are used in combination with boiler or threaded tubes to build transport systems or work tables. Threads (M16) are provided on the bottom to accommodate adjustment or leveling feet.

Support bases of types IQ and YQ allow the connection of two support bases with defined distance to stabilize the structure.

How to order

1	Type
2	d ₁

GN 6470- I -B60,3

How to order (For cross connectors)

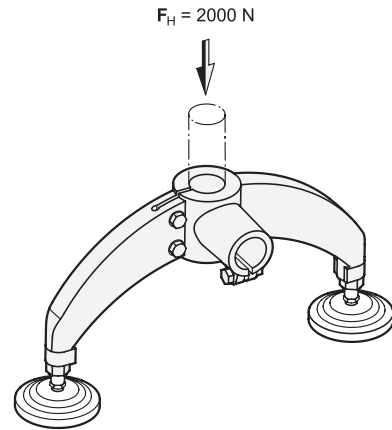
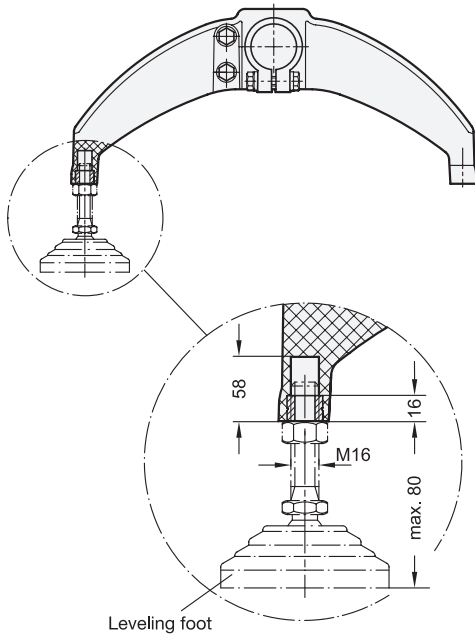
1	Type
2	d ₁
3	d ₂

GN 6470-YQ-B42,4-B42,4

3.1
3.2
3.3
3.4
3.5
3.6
3.7
3.8
3.9
3.10

Mounting Information

The adjustment or leveling feet are installed as shown in the outline. The maximum projection of the leveling feet must not be exceeded.



Application Examples

