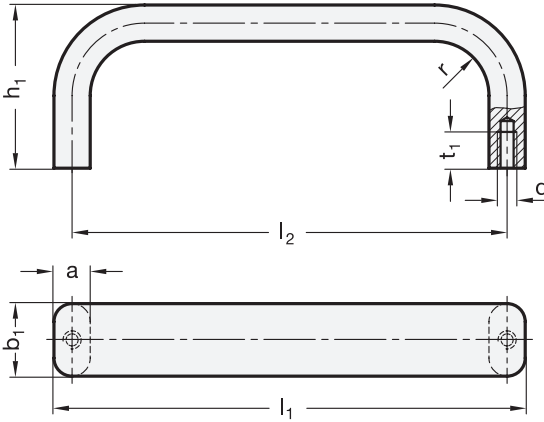
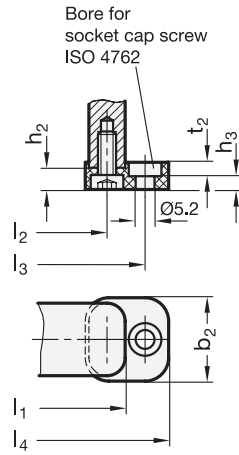


Type A



Type B



3 Type

- A** Mounting from the back (threaded blind bore)
- B** Mounting from the operator's side (only for $b_1 = 20$)

1 b_1	2 l_1	a	b_2	d	h_1	h_2	h_3	l_2	l_3	l_4	r	t_1 min.	t_2
20	130	10	23	M 5	45	6,5	2,5	120	141	153	15	10	5
20	170	10	23	M 5	45	6,5	2,5	160	181	193	15	10	5
20	190	10	23	M 5	45	6,5	2,5	180	201	213	15	10	5
20	210	10	23	M 5	45	6,5	2,5	200	221	233	15	10	5
30	262	12	-	M 6	50	-	-	250	-	-	15	12	-
30	312	12	-	M 6	50	-	-	300	-	-	15	12	-
30	362	12	-	M 6	50	-	-	350	-	-	15	12	-
30	412	12	-	M 6	50	-	-	400	-	-	15	12	-

Specification

Handle

Aluminum

- Powder coated
 - Black, RAL 9005, textured finish
 - Silver, RAL 9006, textured finish
- Plain finish, tumbled

- **SW**
- **SR**
- **BL**

Fastening set for type B

- Handle bases
 - Plastic, Polyamide (PA)
 - Black, matte finish for SW / BL
 - Light gray, matte finish for SR
- Socket cap screws DIN 7984
 - Steel
 - Zinc plated, blue passivated

RoHS

Flat cabinet U-handles GN 668 are manufactured from a bent aluminum profile.

They can be mounted either from the back (type A) or by means of the handle base from the operator's side (type B).

see also...

GN 728 Cabinet U-Handles (Aluminum, Mounting from the operator's side or back) Page QVX

Technical Information

Load Rating Information QVX
 Plastic Characteristics QVX

How to order

GN 668-20-170-B-SW

- 1** b_1
- 2** l_1
- 3** Type
- 4** Finish

