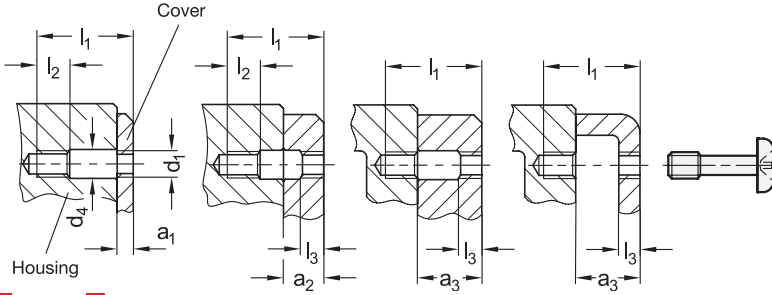


Assembly options



¹ d ₁	² l ₁	a ₁	a ₂	a ₃	d ₂	d ₃ -0,3	d ₄	k	l ₂	l ₃	Phillips drive
M 3	12	1,5-3	3-6,5	6,5-8	5,5	2,2	3,5	2	4	1,5	PH 2
M 3	16	3-7	7-8	8-12	5,5	2,2	3,5	2	4	1,5	PH 2
M 4	16	2-5	5-8	8-11	7	3	4,5	2,6	5	2	PH 2
M 4	20	5-9	9-11	11-15	7	3	4,5	2,6	5	2	PH 2
M 5	20	2,5-6	6-10,5	10,5-14	9	3,9	5,5	3,3	6	2,5	PH 2
M 5	25	6-11	11-14	14-19	9	3,9	5,5	3,3	6	2,5	PH 2
M 6	25	3-7	7-13	13-17	10,5	4,6	6,5	3,9	8	3	PH 3
M 6	30	7-12	12-17	17-22	10,5	4,6	6,5	3,9	8	3	PH 3
M 8	30	4-8	8-16	16-20	14	6,3	8,5	5,2	10	4	PH 3
M 8	35	8-13	13-20	20-25	14	6,3	8,5	5,2	10	4	PH 3
M 8	40	13-18	18-25	25-30	14	6,3	8,5	5,2	10	4	PH 3

Specification

Stainless steel AISI 304

RoHS



NI

Pan head screws GN 7045.2 feature a recessed stud d₃, making it easy to secure them against loss, such as in a cover.

Thus the „captivity of the mounting element“ according to the Machinery Directive 2006 / 42 / EG is given.

For this purpose, instead of a normal through / threaded hole a thread d₁ on both sides, if necessary with a corresponding clearance hole d₄ must be provided. Depending on the design and required clamping length a₁ ... a₃ of the cover, there are a number of assembly options as shown.

see also...	Page
GN 653.2 Knurled Screws	QVX
GN 912.2 Socket Cap Screws	QVX
GN 7984.2 Socket Cap Screws (with Low-Profile Head)	QVX

Technical Information

Stainless Steel Characteristics	QVX
---------------------------------	-----

How to order

GN 7045.2-M4-16-NI

¹	d ₁
²	l ₁
³	Material