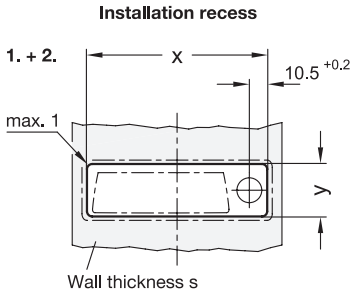


**Construction and assembly instructions**

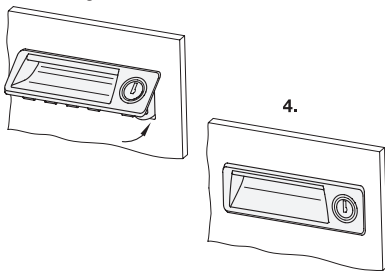


1. For installation, make a recess in the door, cover or hatch as shown in the outline drawing.

The recess dimension y is to be made depending on the sheet metal thickness of the door. The appropriate values are shown in the table.

Wall thickness <b>s</b>	<b>x +0,3</b>	<b>y +0,1</b>
0,7 ... 1,0	110	30,5
> 1,0 ... 1,5	110	30,7
> 1,5 ... 2,2	110	31,7

**3. Installation**



2. Deburr the recess before fitting the gripping tray.

3. First insert the top of the gripping tray into the opening.

4. Then push in the bottom side until the latch elements clip into place.

**Specification**



- Housing, operation bolt  
Plastic  
Technopolymer (Polyamide PA)  
- Glass fiber reinforced  
- Temperature resistant up to 80 °C  
- Black-gray, RAL 7021, matte finish ● **SG**
- **GN 731.2**  
- Latch arm  
Steel, zinc plated  
- Lock cylinder  
Zinc die casting  
- Key  
Brass, nickel plated  
- Washer, screw (Type SC, SU, SM)  
Steel, zinc plated  
- Washer, screw (Type DK, VK, VDE)  
Stainless steel AISI 304
- **GN 731.5** (only type DK, VK, VDE)  
Latch arm, washer, screw  
Stainless steel AISI 304

• *Stainless Steel Characteristics* → Page 2166

• **RoHS**

**Accessory**

- The general key (for type SM of GN 731.2) can be ordered separately under GN 731.2-SMK.

**Information**

Latches with gripping tray GN 731.2 / GN 731.5 are used in applications which require a moulded recess in addition to the latching mechanism, e.g. if operating elements are not allowed to protrude for reasons of space. They lock by a turning operation limited to 90°, which moves the latch arm in the locked position behind the door frame.

Latch arms with different bend angles cover a latch distance A1 or A2 from 11 to 35 mm (GN 731.2) and from 20 to 26 mm (GN 731.5). The latch arm length can also be selected.

Depending on the type, the latches are supplied with 2 plastic socket keys or 2 brass keys. The key may be pulled off in both end positions.

For types with the same lock every lock can be opened with the same key. For types with different locks, there are over 400 (type SU) or 160 (type SM) different lock variants with correspondingly numbered keys.

The details on load-bearing capacity F<sub>1</sub> and F<sub>2</sub> were determined with a wall thickness s = 1,5 mm.

The latches with gripping tray GN 731.2 and GN 731.5 are supplied with loosely enclosed latch arm.

<p>How to order (With latch arm steel)</p> <p><b>GN 731.2-SC-2-35-1-SG</b></p>	1	Type
	2	Latch arm crimping z
	3	Latch arm length l
	4	Identification no.
	5	Finish

<p>How to order (With latch arm stainless steel)</p> <p><b>GN 731.5-VK-3-45-2-SG</b></p>	1	Type
	2	Latch arm crimping z
	3	Latch arm length l
	4	Identification no.
	5	Finish

