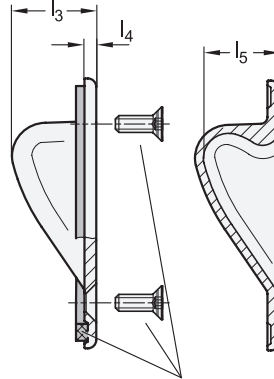
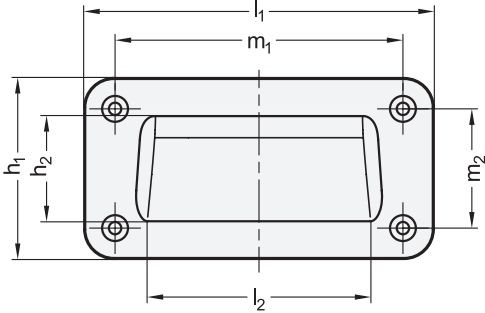


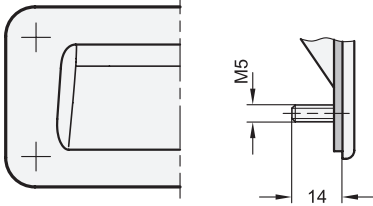
Type A



**2 Type**

- A** Mounting from the operator's side (for identification no. 2 with four countersunk sealing screws)
- C** Mounting from the back

Type C

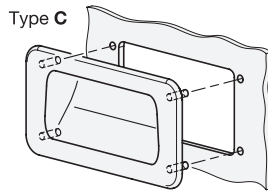
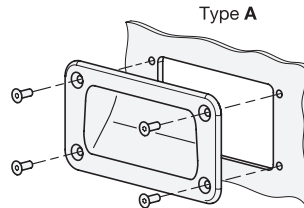
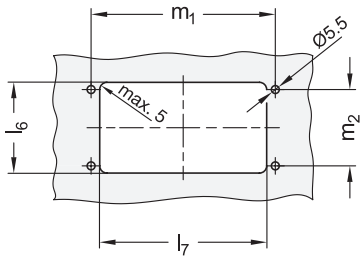


Countersunk sealing screws / Housing seal (for identification no. 2)

**3 Identification no.**

- 1 Without seal
- 2 With seal

Mounting cut-out



**1**

$l_1$	$h_1$	$h_2$	$l_2$	$l_3$	$l_4$	$l_5$	$l_6 + 1$	$l_7 + 1$	$m_1$	$m_2$
127	80	43	72	25	3,5	22,5	60	88	100	53
155	80	43	99	25	3,5	22,5	60	115	128	53

**Specification**

- Zinc die casting  
Powder coated  
Black, RAL 9005, textured finish **● SW**  
Silver, RAL 9006, textured finish **● SR**
- Housing seal (Identification no. 2)
  - Rubber NBR, black
  - Glued
- Countersunk sealing screws DIN 7991 M5x16 (Type A, identification no. 2)
  - Stainless steel A2
  - Polyamide coating on head
- Grub screws (Type C)
  - Stainless steel AISI 304
  - Molded-in
- Protection class IP 66
- RoHS

**4**

**Information**

- Gripping trays GN 7330 can be easily and quickly installed from the front using countersunk screws or from the back with grub screws.
- Gripping trays with housing seal (Identification no. 2) prevent the penetration of any dirt or liquids into the housing interior. Type A is supplied with four additional countersunk sealing screws, which feature a polyamide coating on the head to create a tight seal.
- see also...
- IP Protection Classes → Page 2153
  - Gripping Trays GN 733 (Plastic, Screw-In Type) → Page 224
  - Gripping Trays GN 731 (Plastic, Clip-In Type) → Page 222

**How to order**

**GN 7330-127-A-2-SW**

1	$l_1$
2	Type
3	Identification no.
4	Finish