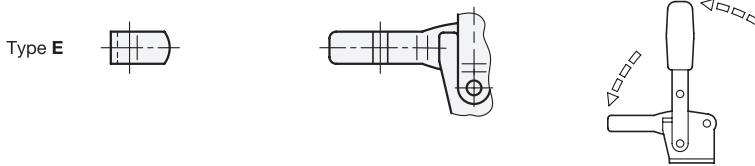


ROSTFREI
Inox
Stainless
Steel

2 Type

- A** Forked clamping arm, with two flanged washers
- C** Forked clamping arm, with two flanged washers and clamping screw GN 708.1
- E** Solid clamping arm, with clasp for welding

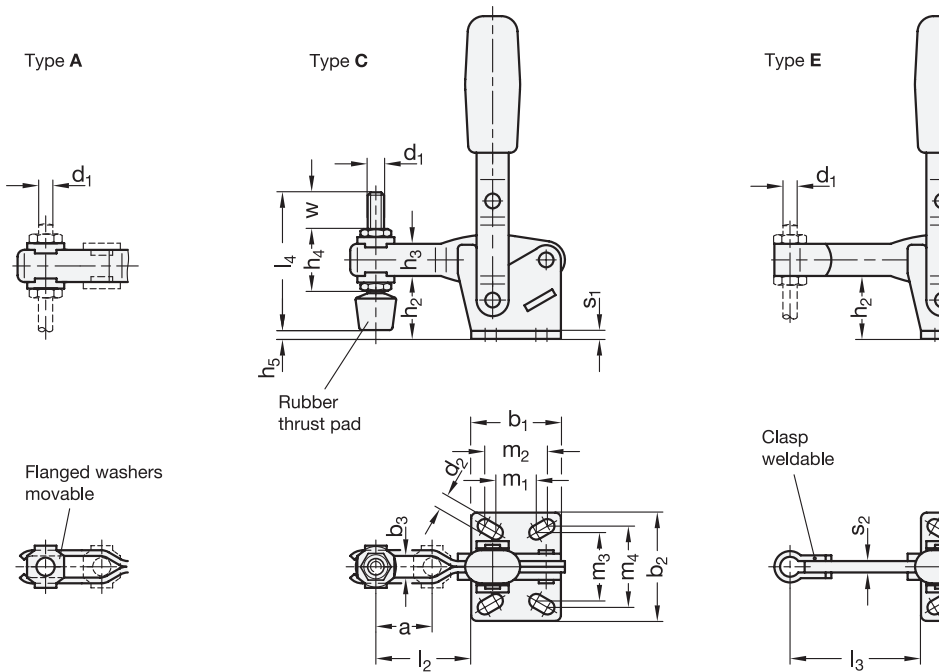
Operating principle



1

Size	Steel	Stainless steel	F _H in N Holding capacity	a ≈	b ₁	b ₂	b ₃	d ₁	d ₂ ≈	h ₁ ≈	h ₂	h ₃	h ₄	h ₅
75	75	75	750	20	29	34	5,2	M 5	4,5	98	20,5	11	19	5,5
130	130	130	1050	28	35	42	6,2	M 6	5,5	142	28	16	25,5	11,3
230	230	230	2000	40	43	45	8,5	M 8	6,5	168	33,5	18	30	9,5
330	-	-	2400	43	50	65	10,5	M 10	8,5	195	43	22	37	15
430	-	-	2800	64	58	65	12,5	M 12	8,5	247	55,5	26	43	23
530	-	-	4500	90	80	95	12,5	M 12	12,5	303	84,5	32	49	52

Size	Steel	Stainless steel	l ₁ ≈ Type A Type C	Type E	l ₂ ≈	l ₃ max.	l ₄	m ₁	m ₂	m ₃	m ₄	r ≈	s ₁	s ₂	w Adjustable range
75	75	75	66,5	67	31,5	41	45	15	16	24	24	62,5	2	4	15
130	130	130	85	86	42	54	55	12,5	19	27	29	79,5	2,5	5	17,5
230	230	230	110,5	112	58	73	68	19	20	32	32	104	3	6	20
330	-	-	129	130,5	66	86	77	29	32	46	45	122	3,5	7	19
430	-	-	164	166	88	114	100	32	32	45	45	156	4	10	33
530	-	-	223	225	125	152	100	50	51	70	70	212	7	10	27



Specification

- Steel —
- Case-hardened Steel C 10
Zinc plated, blue passivated
- Bearing pins tempered
- Bearing rivets (for size 230 and up)
Case-hardened
- Stainless steel AISI 304 **NI**
- All moving parts
Lubricated with special grease
- Solid designed plastic handle
Red, oil resistant
- Clamping screw GN 708.1, type A
 - Steel, zinc plated, blue passivated /
Stainless steel AISI 304
 - Rubber thrust pad 85 Shore A
- *Stainless Steel Characteristics* → Page 2166
- **RoHS**

Accessory

- Clamping Screws → Page 810 ff.
- Holders for Clamping Screws GN 801
(for Type A) → Page 815
- Clamping Arm Extenders GN 801.1
(for Type A) → Page 816
- Clamping Arm Extenders GN 801.2
(for Type E) → Page 817
- Clamping Arm Extenders GN 809.1
(for Type E) → Page 819



Information

Toggle clamps GN 810 work according to the toggle principle, operating lever and clamping arm move in the same direction. In the clamped position the operating lever is in vertical position.

Toggle clamps with forked clamping arm, in type A with two flanged washers, can accommodate an application specific screw. For type C, a clamping screw with neoprene rubber thrust pad is also included.

Toggle clamps in type E can be adapted to special requirements by welding with the supplied clasp.

see also...

- *General Information for Toggle Clamps* → Page 698
- *Toggle Clamps GN 810.10 („Longlife“)* → Page 712
- *Toggle Clamps GN 810.1 (with Vertical Mounting Base)* → Page 702

How to order (Steel)

GN 810-75-E

- 1 Size
- 2 Type

How to order (Stainless steel)

GN 810-75-A-NI

- 1 Size
- 2 Type
- 3 Material

