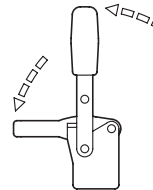


Operating principle



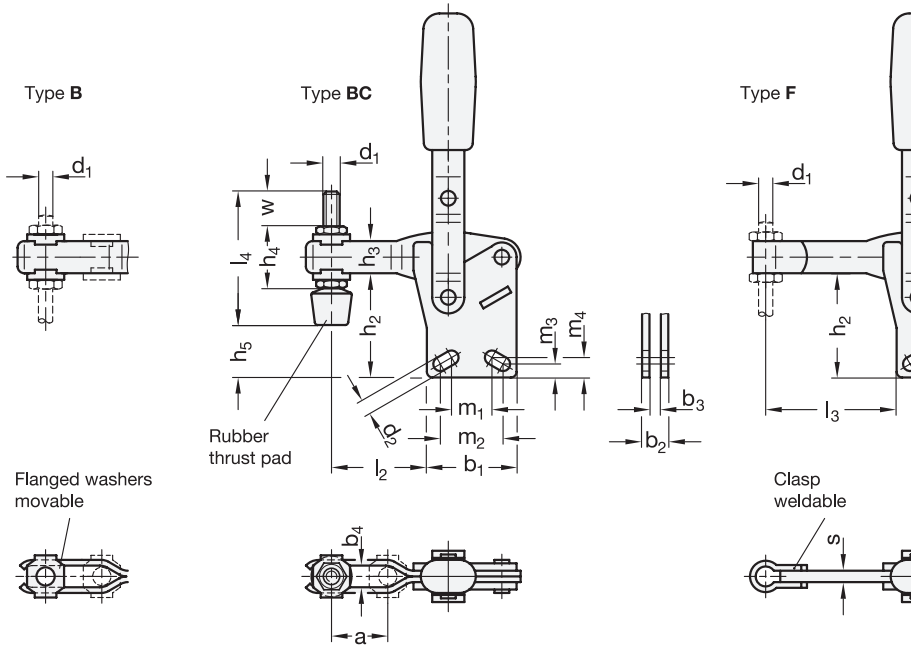
2 Type

- B** Forked clamping arm, with two flanged washers
- BC** Forked clamping arm, with two flanged washers and clamping screw GN 708.1
- F** Solid clamping arm, with clasp for welding

1

Size	Steel	Stainless steel	F _H in N Holding capacity	a ≈	b ₁	b ₂	b ₃	b ₄	d ₁	d ₂ ≈	h ₁ ≈	h ₂	h ₃	h ₄	h ₅ max.
75	75	75	750	20	29	8	4	5,2	M 5	4,5	109	32	11	19	17
130	130	130	1050	28	35	10	5	6,2	M 6	5,5	156	41,5	16	25,5	25
230	230	230	2000	40	43	12	6	8,5	M 8	6,5	183	48	18	30	24
330	-	-	2400	43	50	14	7	10,5	M 10	8,5	218	66	22	37	39,5
430	-	-	2800	64	58	18	10	12,5	M 12	8,5	268	77,5	26	43	45
530	-	-	4500	90	77	18	10	12,5	M 12	12,5	337	117,5	32	49	85

Size	Steel	Stainless steel	l ₁ ≈ Type B Type BC	Type F	l ₂ ≈	l ₃ max.	l ₄	m ₁	m ₂	m ₃	m ₄	r ≈	s	w Adjustable range
75	75	75	66,5	67	31,5	41	45	15	16	5	5	62,5	4	15
130	130	130	85	86	42	54	55	12,5	19	6,5	7,5	79	5	17,5
230	230	230	110,5	112	58	73	68	19	20	6,5	6,5	104	6	20
330	-	-	129	130,5	66	86	77	28,7	32,3	10	9,5	122	7	19
430	-	-	164	166	88	114	100	32	32	10	10	156	10	33
530	-	-	223	225	128	155	100	50	51	12,5	12,5	212	10	27



Specification

- Steel
 - Case-hardened Steel C 10
 - Zinc plated, blue passivated
 - Bearing pins tempered
 - Bearing rivets (for size 230 and up) case-hardened
- Stainless steel AISI 304 **NI**
- All moving parts
Lubricated with special grease
- Solid designed plastic handle
Red, oil resistant
- Clamping screw GN 708.1, type A
 - Steel, zinc plated, blue passivated / Stainless steel AISI 304
 - Rubber thrust pad 85 Shore A
- *Stainless Steel Characteristics* → Page 2166
- **RoHS**



Information

Toggle clamps GN 810.1 work according to the toggle principle, lever and clamping bar move in the same direction. In the clamped position the operating lever is in vertical position.

Toggle clamps with forked clamping arm, with two flanged washers (type B) can accommodate an application specific clamping screw. A clamping screw with neoprene rubber tip is also included for type BC.

Toggle clamps in the type F version can either be utilized by welding the clasp which can then accommodate an application specific hold-down fastener component, or by utilizing the bar in conjunction with the GN 809 holders for clamping screws to hold the work piece in place.

Toggle clamps in type F can be adapted to special requirements by welding with the supplied clasp.

see also...

- *General Information for Toggle Clamps* → Page 698
- *Toggle Clamps GN 810.11 („Longlife“)* → Page 714
- *Toggle Clamps GN 810 (with Horizontal Mounting Base)* → Page 700

Accessory

- Clamping Screws → Page 810 ff.
- Holders for Clamping Screws GN 801 (for Type A) → Page 815
- Clamping Arm Extenders GN 801.1 (for Type A) → Page 816
- Clamping Arm Extenders GN 801.2 (for Type E) → Page 817
- Clamping Arm Extenders GN 809.1 (for Type E) → Page 819

How to order (Steel)	
1 2	
GN 810.1-430-B	1 Size
	2 Type

How to order (Stainless steel)	
1 2 3	
GN 810.1-75-F-NI	1 Size
	2 Type
	3 Material

