

**2 Type**  
T5 With mounting holes (d<sub>2</sub>)

**1**

Size	F <sub>H</sub> in N Holding capacity	a	b <sub>1</sub>	b <sub>2</sub>	b <sub>3</sub>	b <sub>4</sub>	d <sub>1</sub>	d <sub>2</sub>	h <sub>1</sub>	h <sub>2</sub>
1400	15000	22	115	51,5	66	22	10	8,5	57	38

Size	l <sub>1</sub> ≈	l <sub>2</sub> ≈ min.	m <sub>1</sub>	m <sub>2</sub>	m <sub>3</sub>	m <sub>4</sub>	r ≈ at w <sub>2</sub> =0	s	w <sub>1</sub> Stroke	w <sub>2</sub> Adjustable range
1400	318	47	21	95	11	44	97,5	5	24	22

**Specification**

- Steel forged / precision die casting  
Blackened
- Bearing pins steel  
Hardened and ground
- All moving parts  
Lubricated with special grease
- Solid designed plastic handle  
Red, oil resistant
- RoHS

**Information**

Latch type toggle clamps GN 858 are used when very high holding capacities are required.

The latch type clamp also features a locking mechanism which prevents the inadvertent or vibration-induced opening of the clamp.

Another benefit of this clamp is the ability to operate it with one hand.

The catch is included part of the order.

see also...

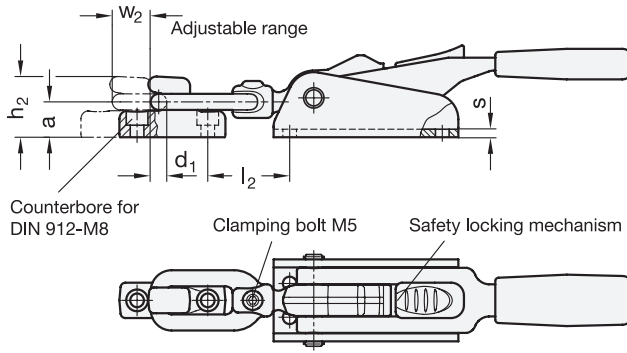
- *General Information for Toggle Clamps* → Page 698
- *Latch Type Toggle Clamps (Steel, Zinc Plated) GN 852* → Page 764

How to order

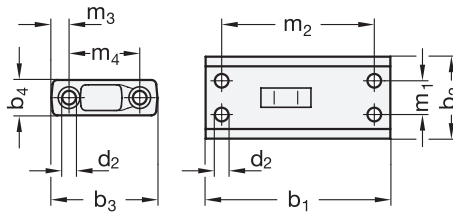
**GN 858-1400-T5**

**1** Size

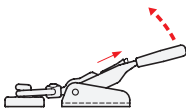
**2** Type



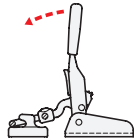
Dimensions of installation (Top view)



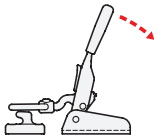
**Description of function (for one-hand operation)**



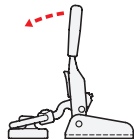
To **release**, move the locking mechanism in the direction of the arrow.



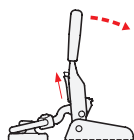
Lift the lever arm until the latch bolt is disengaged from the catch.



Moving the lever arm back will lift the latch bolt and release the catch (one-hand operation).



For **clamping**, lift the lever arm until the latch bolt rests against the catch.



The latch bolt engages with the catch if the locking mechanism is moved upward during clamping.

When clamping in the end position, the mechanism locks automatically through spring tension.

1.1

1.2

1.3

1.4

2.1

2.2

2.3

2.4

