

2 Type
BL Clamping arm horizontal

1

Size (Piston-Ø)	Max. clamping moment in Nm at 6 bar	FS in N Clamping force at r at 6 bar	FH in N Holding capacity at r	a	b -0,2	d1 h8	d2	d3 H8	d4	d5	h1	h2
20	60	2220	7030	27	10	28	M 5	7	4,2	M 5	16	51
32	150	4110	12876	36,5	12	40	M 6	9	5	G 1/8	21	75,5
40	300	6740	16943	44,5	16	50	M 8	11	6,8	G 1/8	26	91,5
50	475	9000	22666	52,5	18	60	M 10	13	8,5	G 1/8	31	114

Size (Piston-Ø)	l1 -0,5	l2	l3	l4	l5	m1 ±0,01	m2	m3 ±0,01	m4	m5 ±0,01	m6	r	s	t
20	150	37,5	70	21,5	4,5	12	7,5	17	34	22	13	27	32	13
32	206	52	91	31	6	18	10	25	51	30	22	36,5	42	15
40	244	63	104	37	7,5	22	13	30	62	37	25	44,5	52	18
50	279	74	110,5	43	8	27	12	47	71,5	44	35	52,5	62	21

Specification

- Steel C45
- Chemically nickel plated **NC**
- Anti-stick coating
- Polytetrafluorethylene (PTFE), green **FG**
- Max. pressure 10 bar
- ISO Fundamental Tolerances → Page 2151
- Plastic Characteristics → Page 2158
- RoHS

Accessory

- Protective covers GN 864.1 → Page 839

3

Information

The maximum clamping moment of the power clamps GN 864 is reached once the clamping arm is at the end of its stroke. For this reason the working stroke should be completed as closely as possible to the stroke end.

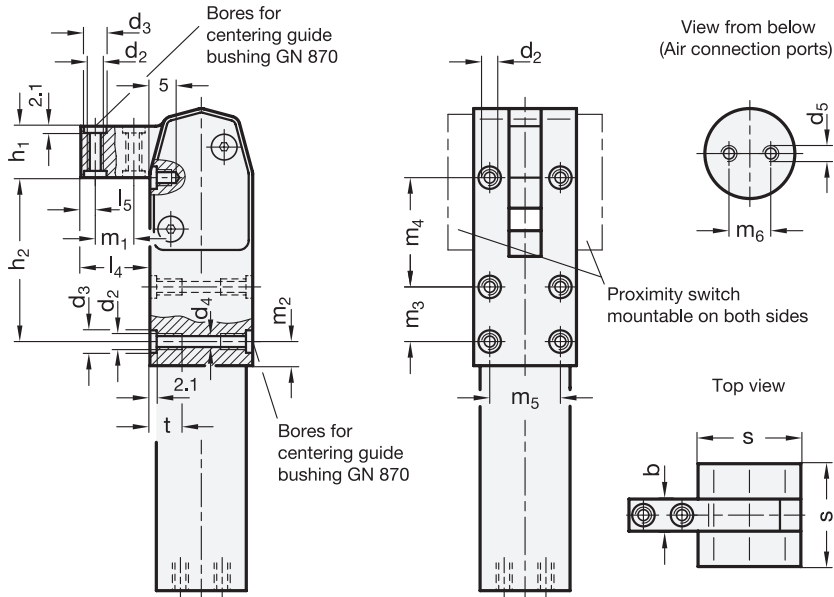
The type FG is equipped with an anti-stick coating of polytetrafluorethylene (PTFE) for protection against welding spray and corrosion. With protective covers GN 864.1, the tensioning mechanism can be additionally protected against penetrating dirt.

see also...

- Operating Principle, Mounting Methods → Page 820
- Proximity Switches (to Monitor the End Position) → Page 838
- Other Accessories → Page 828 ff.

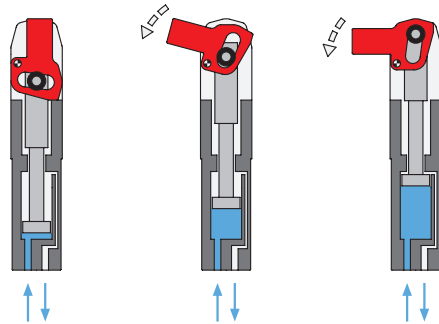
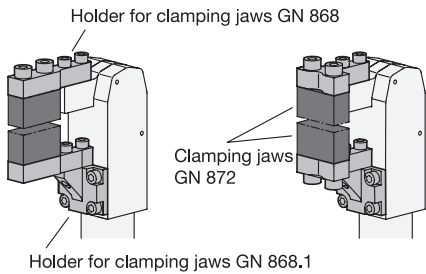
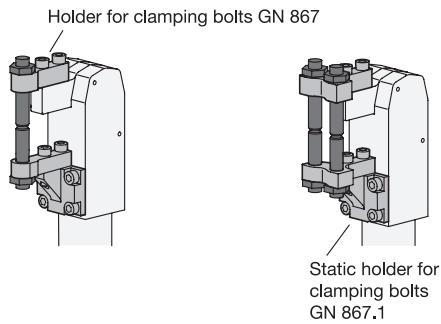
How to order (Chemically nickel plated)	1 Size
GN864-20-BL-NC	2 Type
	3 Finish

How to order (Anti-Stick Coating)	1 Size
GN864-40-BL-FG	2 Type
	3 Finish



Installation examples

Principle of operation



1.1

1.2

1.3

1.4

2.1

2.2

2.3

2.4

