

- 2 Type**
SP Steel sheet metal body
- 3 Coding**
M Magnetic piston

1

Size	F _H in N Holding capacity	F _S in N Clamping force at 6 bar ≈	a	b ₁	b ₂	d ₁	d ₂	d ₃	d ₄ Compressed air connections	Inside Ø Connection tube	h
70	1200	780	13,5	42	64	8,5	M 6	4,3	M 5	4	50
360	5600	1290	27,5	55	90	12	M 8	5,5	G 1/8	4	69
1100	16000	4480	28	66	133	16	M 10	8,5	G 1/4	6	85
2100	25000	5520	38,5	80	177	20	M 12	8,5	G 1/4	8	96,5

Size	l ₁	l ₂	l ₃	l ₄	m ₁	m ₂	m ₃	m ₄	s ≈	t	w Stroke
70	163	78,5	20	70	26	13	26	-	7,5	12	12
360	274	113	32	94	33,5	30	36,5	-	9,5	15	21
1100	361	171	49	138	41	15	35	41	11	18	31
2100	482	222	61,5	190	50	35	50	50	13,5	22	45

Specification

- Body
Steel
 - Forged
 - Chemically blackened
- Sheet metal parts
 - Case-hardened steel C10
 - Zinc plated, blue passivated
- Tapped connecting rod
Steel St 37
Zinc plated, blue passivated
- Bearing pins (Bearing rivets)
Case-hardened
- Double-action air cylinder
Max. pressure 6 bar
- RoHS

Accessory

- Sensor GN 3380 → Page 850

Information

The clamping principle of the toggle clamps GN 890 is identical in construction and dimensions to the manual toggle clamps GN 842.

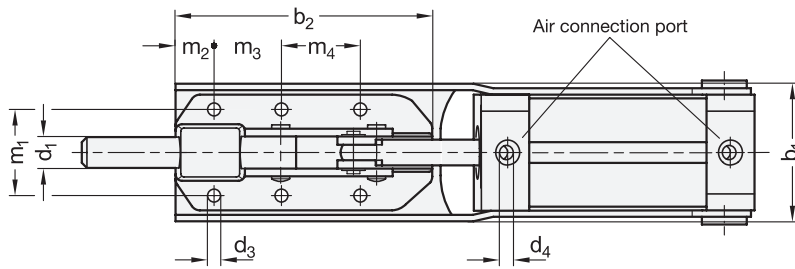
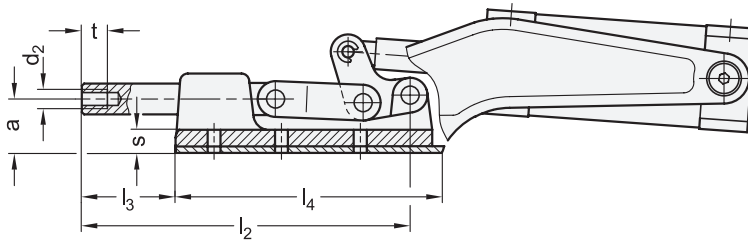
To ensure an extended life of the mechanical parts as well as the air cylinder, the operating pressure should not exceed 6 bar. The sturdy mounting frame for the cylinder has been designed to avoid the trunions of the cylinder to protruding over the frame.

Toggle clamps GN 890 have a magnetic piston. In conjunction with sensors GN 3380, the end position can be sensed and the generated impulse can be used to transmit an electrical signal.

How to order

GN 890-360-SP-M

- 1** Size
- 2** Type
- 3** Coding



1.1

1.2

1.3

1.4

2.1

2.2

2.3

2.4

