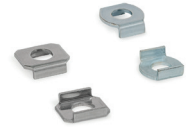
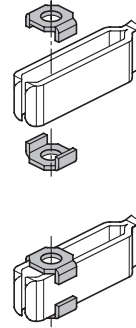


**Assembly instruction**



**GN 898**

d		Actual dimension	b	h	l <sub>1</sub>	l <sub>2</sub>	s	For toggle clamps				VE*
Nominal size	Steel							GN 810	GN 812	GN 820	GN 820.6	
4	4	4,3	7,2	2,5	9	5	0,8	-	-	25	-	10
5	5	5,5	9,8	3,5	12	7,5	1	75	-	75	80	10
6	6	6,5	11,8	4,5	15	9	1,2	130	-	130	-	10
8	8	8,5	15	5,5	18	12,5	1,5	230	200	230	140	10
10	10	10,5	18	6	23	16,5	2	330	300	355	250	10
12	-	13	24	7	30	18	2,5	430 / 530	-	455	-	10

\* Packaging unit



**GN 898.1**

d		Actual dimension	b	h	l <sub>1</sub>	l <sub>2</sub>	s	For toggle clamps		VE*
Nominal size	Steel							GN 810.10	GN 810.11	
6	6,5	12,5	12,5	4,5	13,5	8,5	1,5	220	220	10
10	10,5	20,5	20,5	6,9	22	14	2	440	440	10

\* Packaging unit

**Specification**

**GN 898**

- Steel **ST**
- Zinc plated, blue passivated
- Stainless steel AISI 304 **NI**

**GN 898.1**

- Steel **ST**
- Zinc plated, blue passivated

RoHS

**Technical Information**

Stainless Steel Characteristics **Page** QVX

Flanged washers GN 898 and GN 898.1 are used to attach and position pressure elements on toggle clamps with open clamping arm. The corresponding toggle clamps are listed in the table. They are supplied in packaging units of 10 pieces each.

see also...

	<b>Page</b>
GN 810 Toggle Clamps	QVX
GN 820 Toggle Clamps	QVX

**How to order**

**GN 898-5-NI**

- 1 d
- 2 Material

**How to order**

**GN 898.1-10-ST**

- 1 d
- 2 Material

