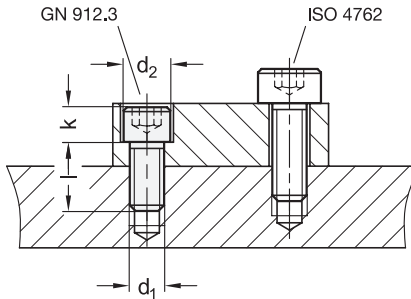


Assembly examples / Comparison



d ₁	Length l								d ₂ ±0,1	k	A/F
	3	4	5	6	8	10	12	16			
M 3	5	6	8	10	12	-	-	4,5	3	2,5	
M 4	6	8	10	12	16	20	25	5,5	4	3	
M 5	8	10	12	16	20	25	-	7	4,5	4	
M 6	8	10	12	16	20	25	30	8,5	5,5	5	
M 8	10	12	16	20	25	30	35	11	7,5	6	
M 10	16	20	25	30	35	40	-	13,5	9,5	8	

Specification

Stainless steel AISI 304

RoHS



NI

Socket cap screws GN 912.3 have a reduced head diameter compared with socket cap screws ISO 4762.

Thus the screws can be countersunk in places where this would not be possible with standard socket cap screws due to insufficient space, such as a small edge distance.

Due to their head geometry, screws according to this specification have a reduced load capacity as per ISO 898-1.

see also...

	Page
GN 7984.3 Socket Cap Screws (with Low-Profile Head and Reduced Head Diameter)	QVX

Technical Information

Stainless Steel Characteristics	QVX
---------------------------------	-----

How to order

GN912.3-M3-12-NI

1	d ₁
2	Length l
3	Material

