

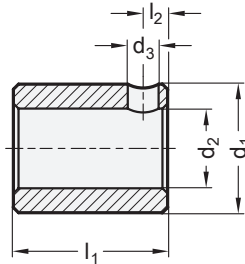
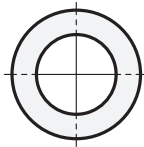


**elesa**

Original design RB51/RB52



Inox  
Stainless  
Steel



1		2										3			For position indicators
d <sub>1</sub> f7	d <sub>2</sub> H7										l <sub>1</sub>	d <sub>3</sub>	l <sub>2</sub>		
10	B 6	B 8	-	-	-	-	-	-	-	20	3,2	2,5	GN 955 / GN 955.2		
14	B 6	B 8	B 10	B 12	-	-	-	-	20	4,25	3,5	GN 954 / GN 954.2 / GN 9054			
20	B 6	B 8	B 10	B 12	B 14	B 15	B 16		20	5,5	4,5	GN 953 / GN 953.2 / GN 9053 / GN 9153			

**Specification**

**Bushing**

- Steel, blackened
- Stainless steel AISI 304



NI

**Grun screw** DIN 916

Stainless steel  
with internal hex and serrated point

RoHS

With the help of adapter bushings GN 952.1 position indicators can be adapted to accept different smaller spindle diameters. The adapter bushings are supplied with a set screw.

see also...

Page

**GN 953 | GN 953.2** Position Indicators (Hollow shaft Steel / Stainless Steel) QVX / QVX

**GN 954 | GN 954.2** Position Indicators (Hollow shaft Steel / Stainless Steel) QVX / QVX

**GN 955 | GN 955.2** Position Indicators (Hollow shaft Steel / Stainless Steel) QVX / QVX

**GN 9053 | GN 9054** Position Indicators (Electronic) QVX / QVX

**GN 9153 | GN 9154** Position Indicators (Data Transmission via Radio Frequency) QVX / QVX

**Technical Information**

ISO Fundamental Tolerances

QVX

Stainless Steel Characteristics

QVX

How to order (Steel)

**GN 952.1-14-B12-20**

- 1 d<sub>1</sub>
- 2 d<sub>2</sub>
- 3 l<sub>1</sub>

How to order (Stainless steel)

**GN 952.1-10-B8-20-NI**

- 1 d<sub>1</sub>
- 2 d<sub>2</sub>
- 3 l<sub>1</sub>
- 4 Material

