

elesa
Original design BS52R

Specification

Plastic, Polyamide (PA)
Black, matte finish

RoHS

Technical Information	Page
Plastic Characteristics	QVX

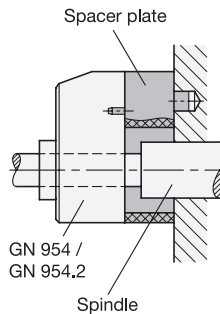
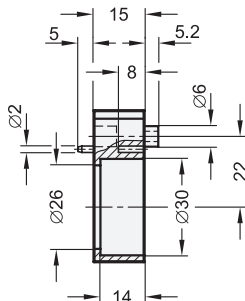
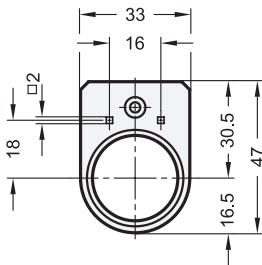
The spacer plate GN 953.1 in combination with the position indicators GN 953 / GN 953.2 are used to bridge the shaft shoulders, set collars and so on.

The bore holes $\varnothing 2.2$ are used for the machine-side fastening with e.g. socket button head self-tapping screws in accordance with DIN ISO 7049.

see also...	Page
GN 953 Position Indicators (Hollow Shaft Steel)	QVX
GN 953.2 Position Indicators (Hollow Shaft Stainless Steel)	QVX

How to order

GN 953.1



elesa
Original design BS51

Specification

Plastic, Polyamide (PA)
Black, matte finish

RoHS

Technical Information	Page
Plastic Characteristics	QVX

The spacer plate GN 954.1 in combination with the position indicators GN 954 / GN 954.2 are used to bridge the shaft shoulders, set collars and so on.

The square bore holes are used for the machine-side fastening with e.g. socket button head self-tapping screws in accordance with DIN ISO 7049.

see also...	Page
GN 954 Position Indicators (Hollow Shaft Steel)	QVX
GN 954.2 Position Indicators (Hollow Shaft Stainless Steel)	QVX

How to order

GN 954.1

