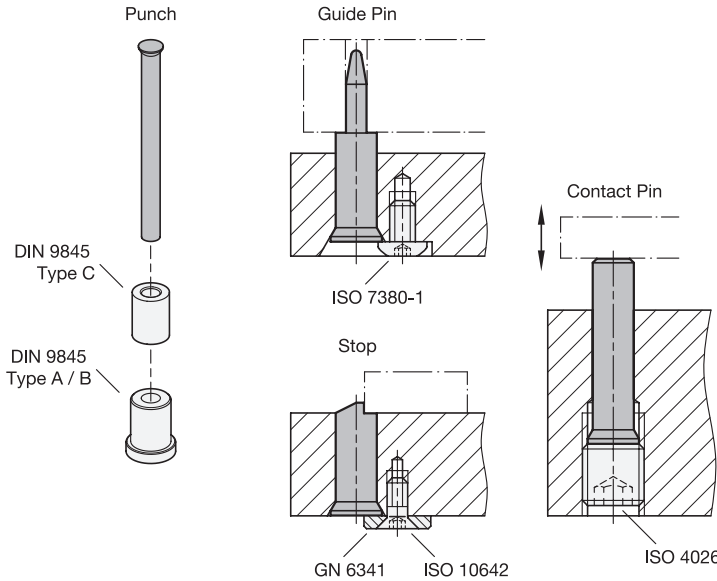


Application examples



3 Type

D With conical head

<sup>1</sup> d <sub>1</sub> h6	<sup>2</sup> Length l +0,5		d <sub>2</sub> ±0,2	h +0,2
2	71	80	3	1,37
3	71	80	4,5	1,8
4	71	80	5,5	1,8
5	71	80	6,5	1,8
6	71	80	8	3,23
8	71	80	10	2,73
10	71	80	12	2,73
12	71	80	14	2,73
16	71	80	18	3,23

Specification

Steel

- Shaft hardened (HRC 62 +2)
- Head hardened (HRC 50 +5)

RoHS

On request

- Other dimensions

Accessory

DIN 9845 Cutting Bushings (Type A | Type B) QVX

DIN 9845 Guide Bushings (Punch Guide Bushings Type C) QVX



HSS

Cutting punches DIN 9861 are used, for example, in combination with cutting bushings DIN 9845 in punching tools. Depending on the application, however, they can also be used as positioning, guide, ejector or embossing pins and can be machined accordingly.

Cutting punches DIN 9861 are characterized by tight shape and position tolerances, a finely machined surface and high wear resistance.

Technical Information

ISO Fundamental Tolerances

Page

QVX

How to order

<sup>1</sup>	d <sub>1</sub>
<sup>2</sup>	Length l
<sup>3</sup>	Type
<sup>4</sup>	Material

DIN 9861-10-80-D-HSS

3.1  
3.2  
3.3  
3.4  
3.5  
3.6  
3.7  
3.8  
3.9  
3.10

