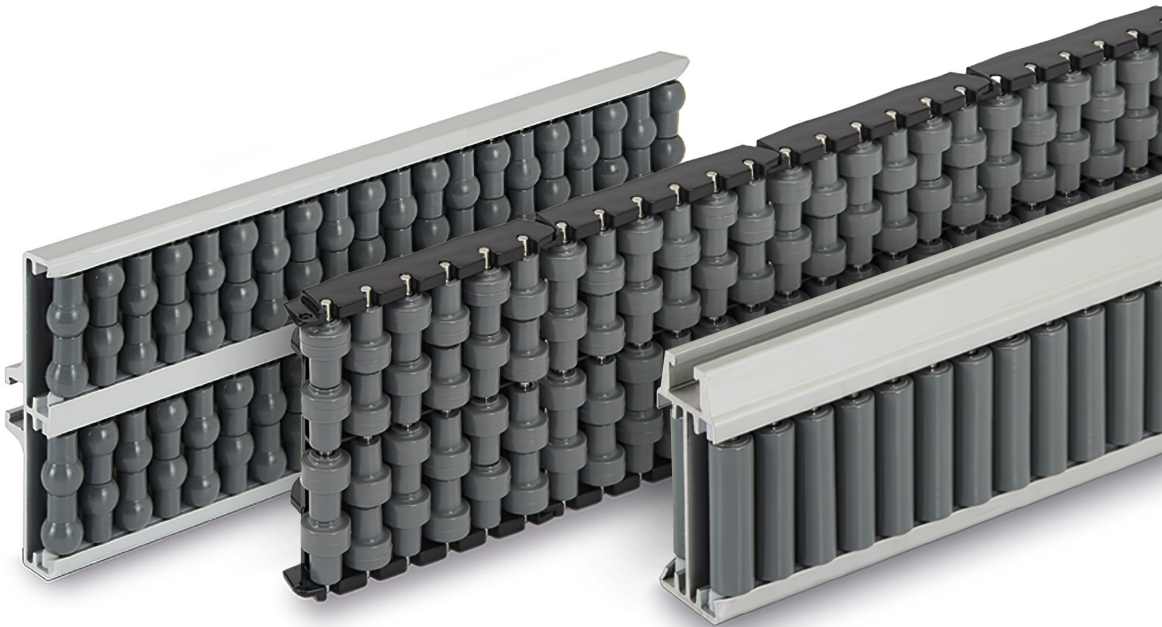




Highlights

Conveyor Components



Standard Parts. **Ganter.**

Conveyor Components



GN 6470
Support Bases
Plastic
Page 6



GN 6470.1
Cross Connectors
Plastic
Page 8



GN 6470.2
Support Heads
Plastic
Page 9



GN 6470.3
Side Support Heads
Plastic
Page 10



GN 6471
Side Guides
Carrier Profile Aluminum,
Rollers Plastic,
One-Sided
Page 12



GN 6471.1
Lead-In Guides
for GN 6471,
Plastic
Page 14



GN 6471.2
End Caps
for GN 6471,
Plastic
Page 15



GN 6471.3
Connecting Strips
for GN 6471 / GN 6472,
Stainless Steel
Page 16



GN 6472
Side Guides
Carrier Profile Aluminum,
Rollers Plastic,
Two-Sided
Page 18



GN 6472.1
Lead-In Guides
for GN 6472,
Plastic
Page 20



GN 6472.2
End Caps
for GN 6472,
Plastic
Page 21



GN 6473
Side Guide Segments
Plastic
Page 22



GN 6473.1
Retaining Profiles
for GN 6473,
Stainless Steel
Page 24



GN 6473.2
Connecting Elements
for GN 6471 / GN 6472 /
GN 6473,
Stainless Steel
Page 25



GN 6475
Side Guides
Plastic,
Guide Contour Flat
Page 26

Conveyor Components
continued



**GN 6475.1
Side Guides**
Plastic,
Guide Contour Rounded
Page 27



**GN 6475.2
Side Guides**
Plastic,
Guide Contour Stepped
Page 28



**GN 6475.3
Side Guide Clamps**
Plastic
Page 29



**GN 6475.4
Side Guide Clamps**
Plastic
Page 30



**GN 6475.5
Side Guide Clamps**
Plastic
Page 31



**GN 6476
Side Guide Brackets**
Plastic, Fixed,
with Contact Edge
Page 33



**GN 6476.2
Side Guide Brackets**
Plastic, Swiveling,
with Contact Edge
Page 34



**GN 6476.3
Side Guide Brackets**
Plastic, Swiveling,
without Contact Edge
Page 35



**GN 646.1
Roller Tracks**
Plastic
Page 36



**GN 646.2
Ball Tracks**
Plastic
Page 37



**GN 646.3
Carrier Rail Profiles**
for GN 646.1/GN 646.2,
Aluminium
Page 38



**GN 646.4
Containment Edge Strips**
for GN 646.1,
Plastic
Page 39



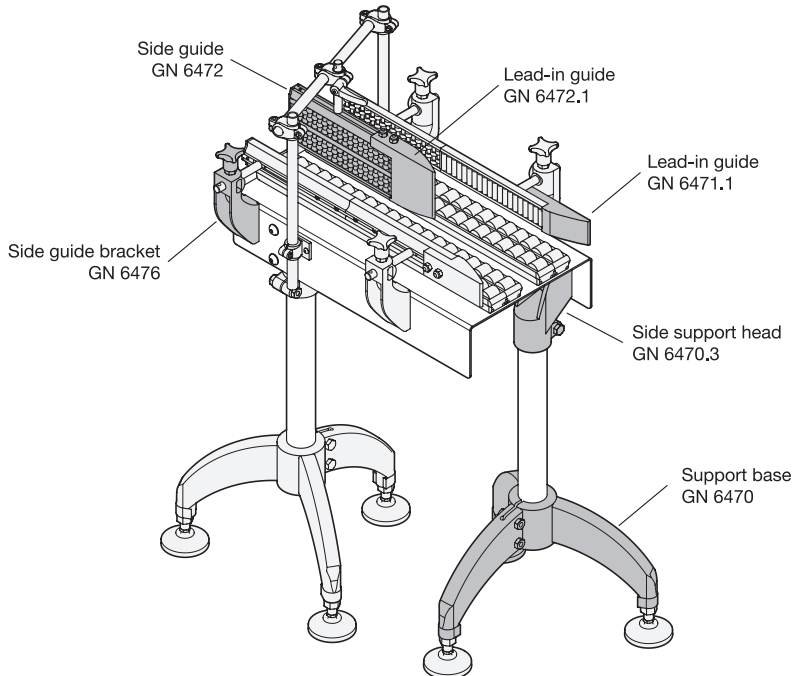
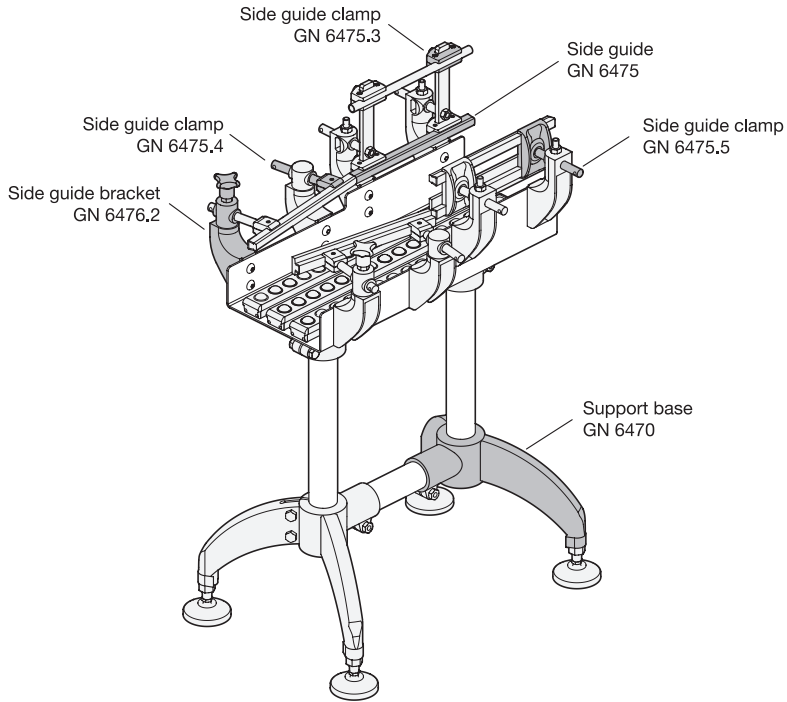
**GN 646.5
Brakes**
for GN 646.1,
Plastic
Page 40

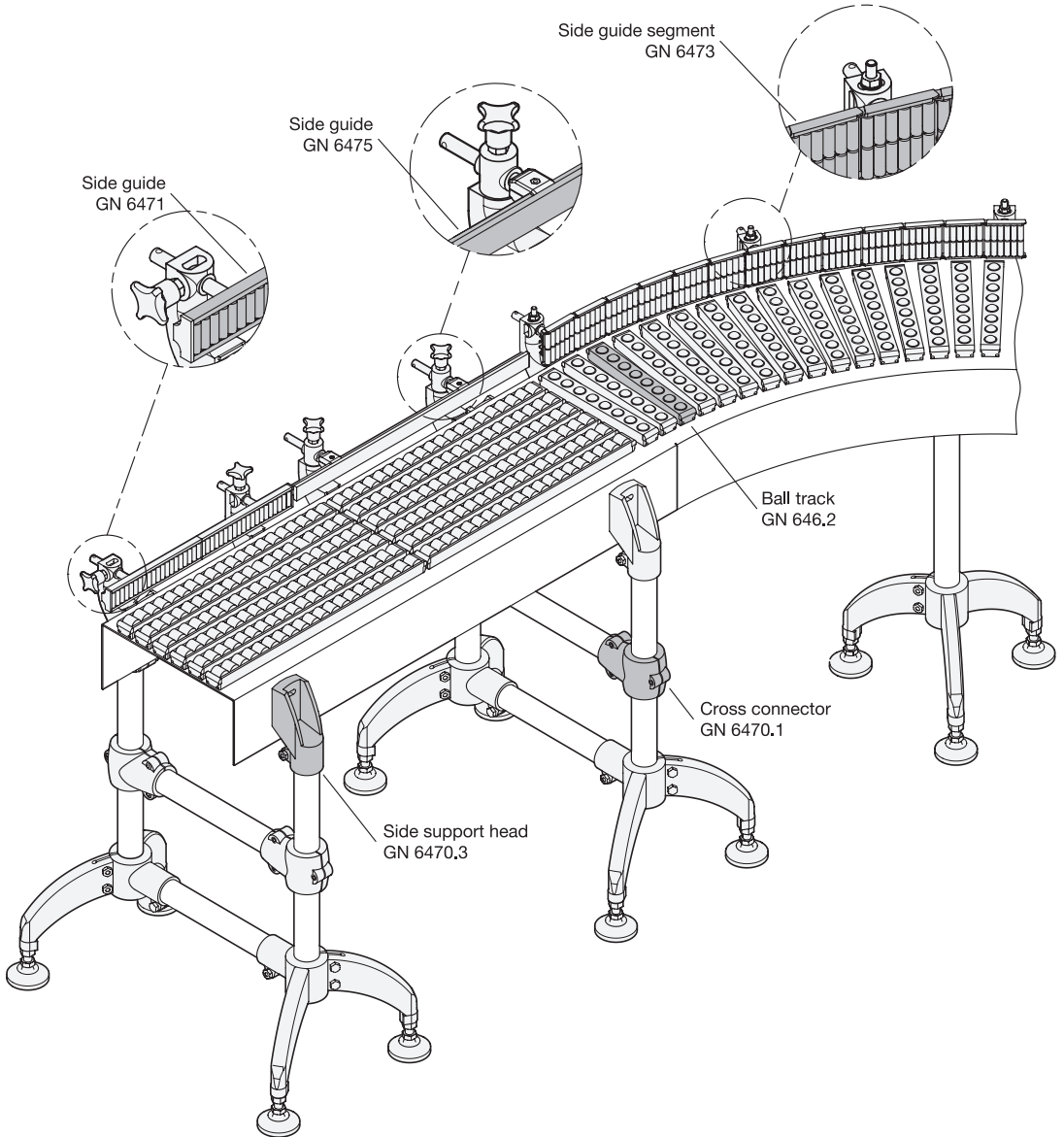


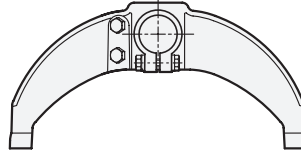
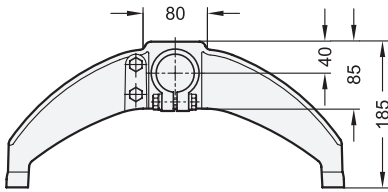
**GN 646.6
End Caps**
for GN 646.3,
Plastic
Page 41



**GN 646.7
Mounting Brackets**
for GN 646.3,
Plastic
Page 42







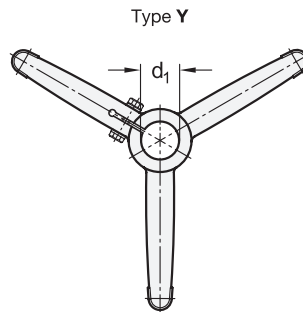
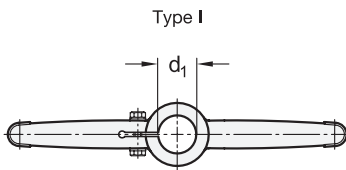
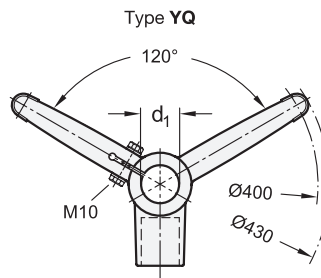
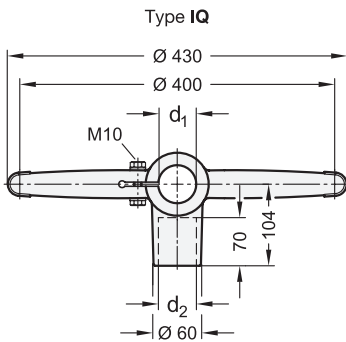
elesa

Original design BAS2 / BAS3 / BAG2



1 Type

- I** Straight
- IQ** Straight for cross connection
- Y** Y-shaped
- YQ** Y-shaped for cross connection



2

3

d₁		d₂	
Bore	Tube nominal size DIN EN 10220 / EN 10255	Bore Type IQ / YQ	Tube nominal size DIN EN 10220 / EN 10255
B 42,4	1 1/4"	B 42,4	1 1/4"
B 48,3	1 1/2"	B 42,4	1 1/4"
B 48,3	1 1/2"	B 48,3	1 1/2"
B 60,3	2"	B 42,4	1 1/4"
B 60,3	2"	B 48,3	1 1/2"

Specification

Base

- Plastic, polyamide (PA)
- Glass fiber reinforced
- Operating temperature -30 °C to +100 °C
- Black, matte finish

Clamping set

- Stainless steel AISI 304
- Hex head screws DIN 931
- Hex nuts DIN 934
- Washers DIN 125

RoHS

Technical Information

Page

- Plastic Characteristics Catalogue 2158
- Stainless Steel Characteristics Catalogue 2166

Support bases GN 6470 are used in combination with boiler or threaded tubes to build transport systems or work tables. Threads (M16) are provided on the bottom to accommodate adjustment or leveling feet.

Support bases of types IQ and YQ allow the connection of two support bases with defined distance to stabilize the structure.

How to order

GN 6470- I -B60,3

1 Type

2 d₁

How to order (For cross connectors)

GN 6470-YQ-B42,4-B42,4

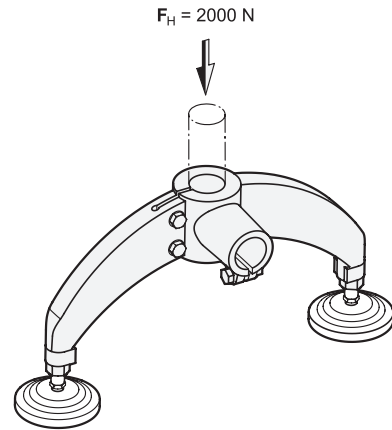
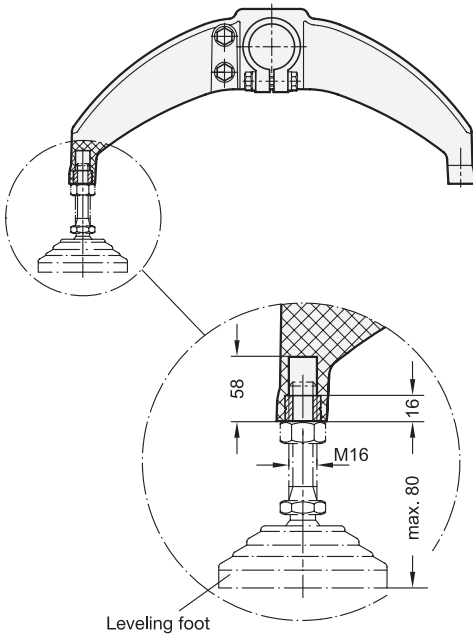
1 Type

2 d₁

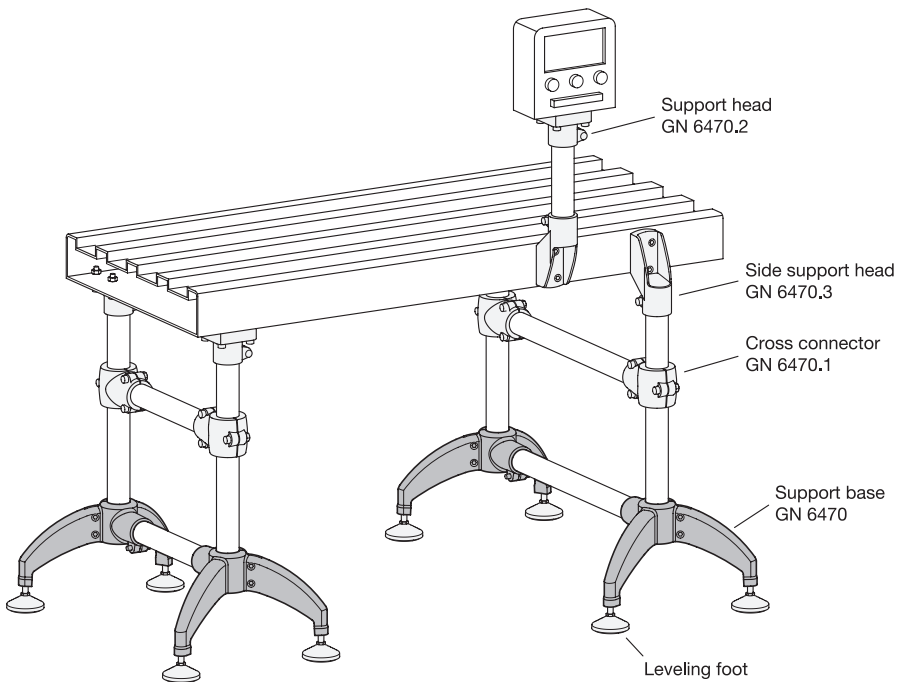
3 d₂

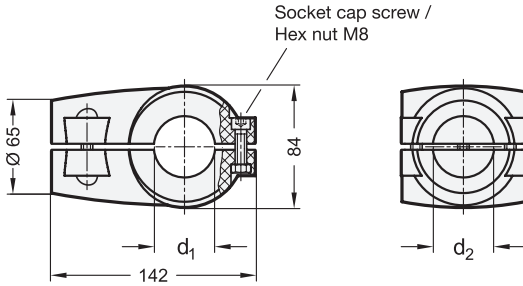
Mounting Information

The adjustment or leveling feet are installed as shown in the outline. The maximum projection of the leveling feet must not be exceeded.

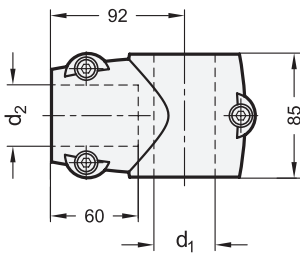


Application Example

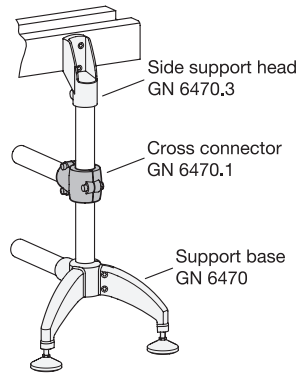




elesa
Original design GC.-SST



Application example



1		2	
d_1	Tube nominal size DIN EN 10220 / EN 10255	d_2	Tube nominal size DIN EN 10220 / EN 10255
B 42,4	1 1/4"	B 42,4	1 1/4"
B 48,3	1 1/2"	B 42,4	1 1/4"
B 48,3	1 1/2"	B 48,3	1 1/2"
B 60,3	2"	B 42,4	1 1/4"
B 60,3	2"	B 48,3	1 1/2"

Specification

Connector

- Plastic, polyamide (PA)
- Glass fiber reinforced
- Operating temperature -30 °C to +100 °C
- Black, matte finish

Clamping set

- Stainless steel AISI 304
- Socket cap screws ISO 4762
- Hex nuts DIN 934

RoHS

On request

With square 45 x 45

Cross connectors GN 6470.1 are used with boiler or threaded tubes to build transport systems or work tables. They enable the creation of lateral connections with defined distance and stabilize the structure.

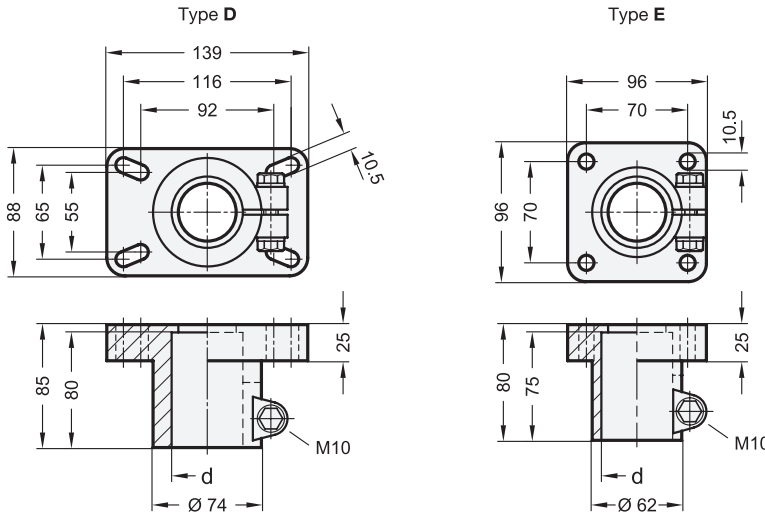
see also...	Page
GN 6470 Support Bases	6
GN 6470.2 Support Heads	9
GN 6470.3 Side Support Heads	10

Technical Information

Technical Information	Page
Plastic Characteristics	Catalogue 2158
Stainless Steel Characteristics	Catalogue 2166

How to order

GN 6470.1-B48,3-B42,4	1	d_1
	2	d_2

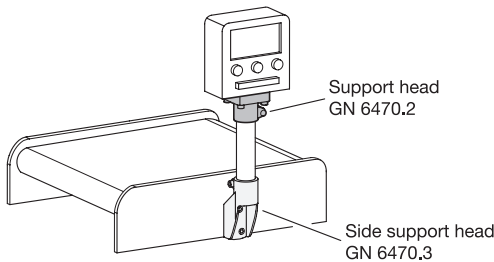


elesa
Original design TTA. / TTB.



2 Type
D With slotted holes
E With bores

Application example



d		Tube nominal size DIN EN 10220 / EN 10255
Type D	Type E	
B 42,4	-	1 1/4"
B 48,3	B 48,3	1 1/2"
B 60,3	-	2"

Specification

Support head

- Plastic, polyamide (PA)
- Glass fiber reinforced
- Operating temperature -30 °C to +100 °C
- Black, matte finish

Clamping set

- Stainless steel AISI 304
- Hex head screws DIN 931
- Hex nuts DIN 934
- Washers DIN 125

RoHS

On request

Type D with square 45 x 45

Support heads GN 6470.2 are used in combination with boiler or threaded tubes to build transport systems or work tables. They connect the structure, e.g. with conveyor belts or control panels, at a right angle to the tube axis.

see also...	Page
GN 6470 Support Bases	6
GN 6470.1 Cross Connectors	8
GN 6470.3 Side Support Heads	10

Technical Information

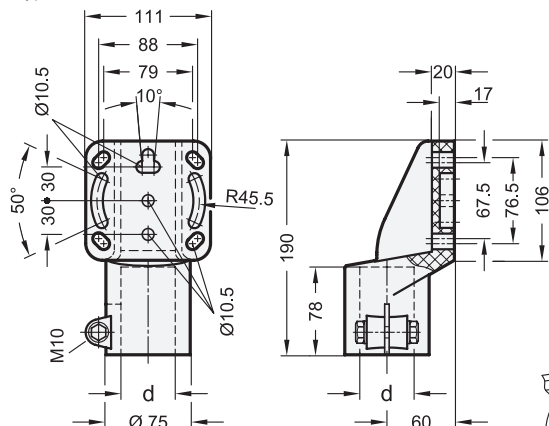
	Page
Plastic Characteristics	Catalogue 2158
Stainless Steel Characteristics	Catalogue 2166

How to order

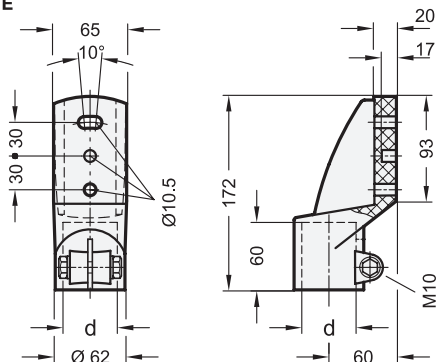
GN 6470.2-B48,3-E

- 1 d
- 2 Type

Type D



Type E



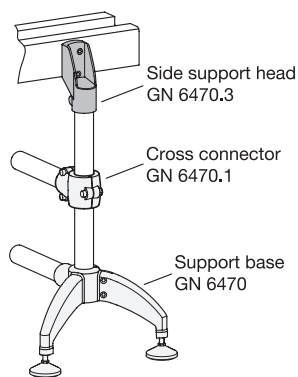
elesa

Original design TSLA / TSLB



Inox
Stainless
Steel

Application example



2 Type

- D** With 4 slotted holes
- E** With 2 bores



d		Tube nominal size DIN EN 10220 / EN 10255
Type D	Type E	
B 42,4	-	1 1/4"
B 48,3	B 48,3	1 1/2"
B 60,3	-	2"

Specification

Support head

- Plastic, polyamide (PA)
- Glass fiber reinforced
- Operating temperature -30 °C to +100 °C
- Black, matte finish

Clamping set

- Stainless steel AISI 304
- Hex head screws DIN 931
- Hex nuts DIN 934
- Washers DIN 125

RoHS

On request

Type D with square 45 x 45

Side support heads GN 6470.3 are used in combination with boiler or threaded tubes to build transport systems or work tables. They connect the structure, e.g. with conveyor belts or control panels, laterally or parallel to the tube axis.

see also...

	Page
GN 6470 Support Bases	6
GN 6470.1 Cross Connectors	8
GN 6470.2 Support Heads	9

Technical Information

	Page
Plastic Characteristics	Catalogue 2158
Stainless Steel Characteristics	Catalogue 2166

How to order

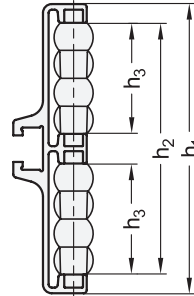
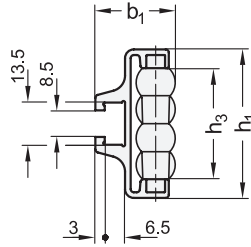
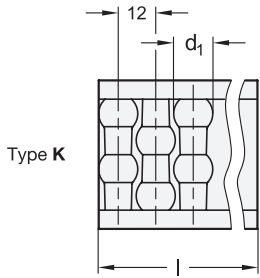
GN 6470.3-B60,3-D

1	d
2	Type



Identification no. 1

Identification no. 2



elesa

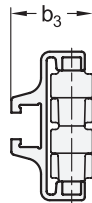
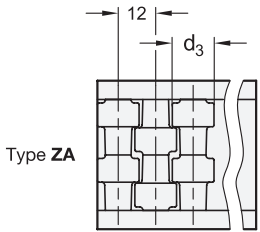
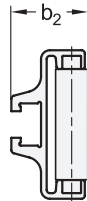
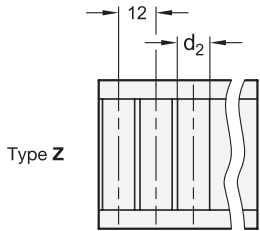
Original design GLA-1 / GLA-2

1 Type

- K Ball-shaped rollers
- Z Cylindrical rollers
- ZA Cylindrically offset rollers

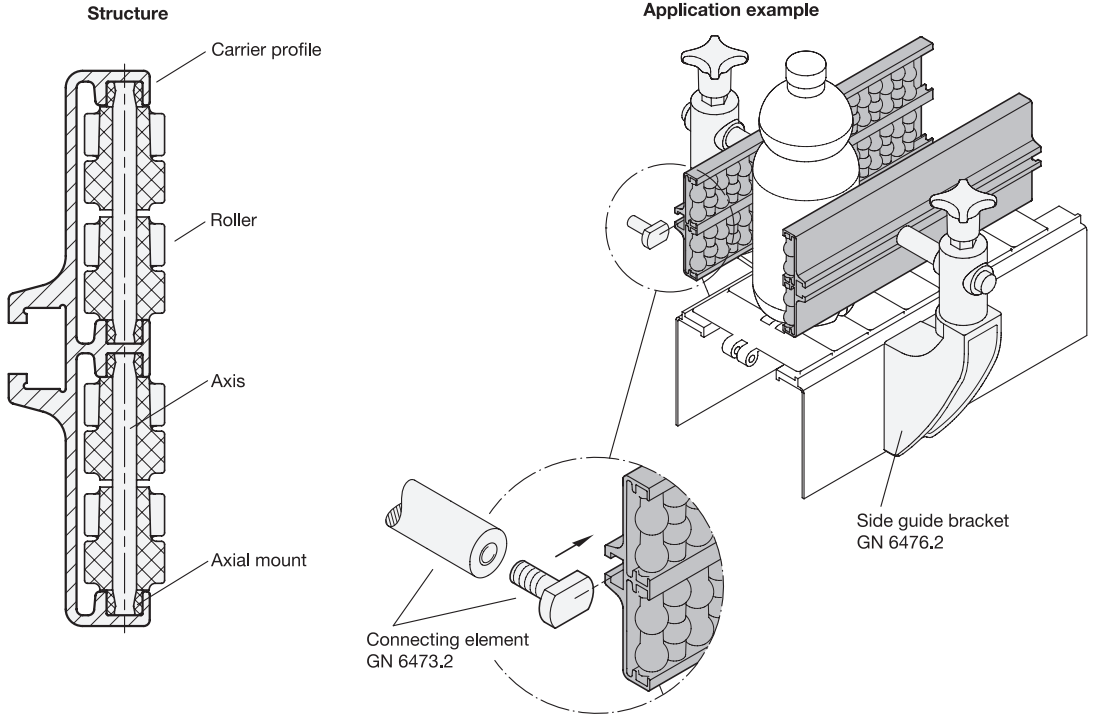
2 Identification no.

- 1 Single row
- 2 Double row



3

Length l	b ₁	b ₂	b ₃	d ₁	d ₂	d ₃	h ₁		h ₂	h ₃	Packaging unit	
							Id. no. 1	Id. no. 2				
1440	3000	25,5	25	26	12,5	11,25	13,5	47,5	93	81,5	36	2



Specification



Carrier profile

Aluminum **AL**
Anodized, natural color

Rollers

Plastic, polyethylene (PE)
• Operating temperature -20 °C to 90 °C
• Gray **GR**

Axis

Stainless steel AISI 304

Axial mount

Plastic, polyacetal (POM)
• Operating temperature -20 °C to 90 °C
• White

RoHS

Accessory

Page

GN 6471.1 Lead-In Guides	14
GN 6471.2 End Caps	15
GN 6471.3 Connecting Strips	16
GN 6473.2 Connecting Elements	25

Side guides GN 6471 are attached to the sides of conveyor sections and their rollers guide the conveyed goods without damage.

The type of rollers used depends on the conveyed material. Type K is used for cans and plastic boxes. For cardboard boxes, type Z can be used for an even material flow. For containers of glass, type ZA is used since it allows easy removal of any contamination due to glass breakage.

Side guides are fastened on the rear side via the T-slot. Connecting elements GN 6473.2 can be used for this purpose, for example.

The side guides are delivered in packaging units of 2 pieces each. They can be shortened in increments of 120 mm.

see also...

Page

GN 6472 Side Guides	18
GN 6476.2 Side Guide Brackets	34

Technical Information

Plastic Characteristics	Catalogue 2158
Stainless Steel Characteristics	Catalogue 2166

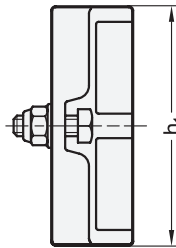
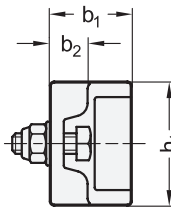
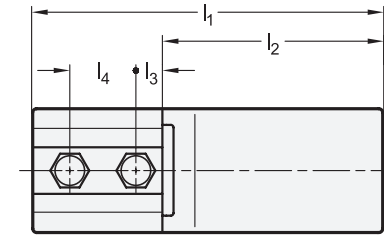
How to order

GN 6471-ZA-1-3000-AL-GR

1	Type
2	Identification no.
3	Length l
4	Material
5	Color

Identification no. 1

Identification no. 2



elesa

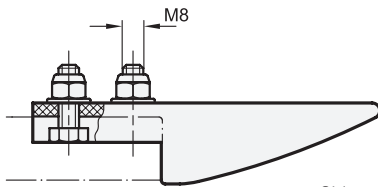
Original design PGL-1 / PGL-2



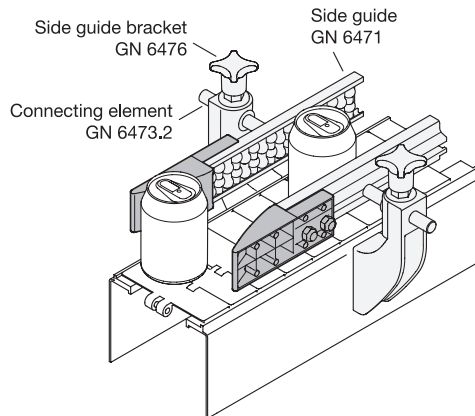
Inox
Stainless
Steel

1 Identification no.

- 1 Single row
- 2 Double row



Application example



l ₁	b ₁	b ₂	h ₁		l ₂	l ₃	l ₄
			Id. no. 1	Id. no. 2			
135	31,5	15,3	47,5	93	85	11	25

Specification

Guide

- Plastic, polyethylene
- Operating temperature -20 °C to 90 °C
- Gray

PE

GR

Hex head screws / Nuts

Stainless steel AISI 304

RoHS

Lead-in guides GN 6471.1 extend side guides GN 6471 and ensure a smooth material flow. They are mounted on the end face by sliding into the T-slot of the side guide using the supplied nuts.

see also...

	Page
GN 6471 Side Guides	12
GN 6476 Side Guide Brackets	33
GN 6473.2 Connecting Elements	25

Technical Information

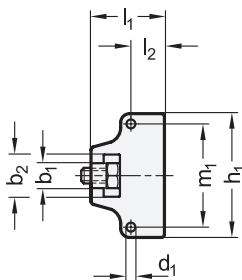
Plastic Characteristics	Catalogue 2158
Stainless Steel Characteristics	Catalogue 2166

How to order

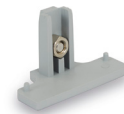
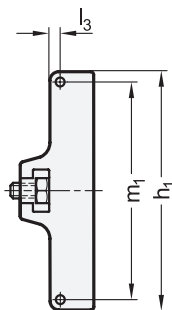
1	Identification no.
2	l ₁
3	Material
4	Color

GN 6471.1-1-135-PE-GR

Identification no. 1



Identification no. 2

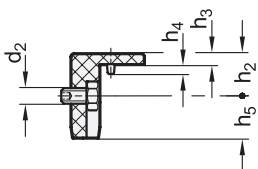


elesa
Original design TGL

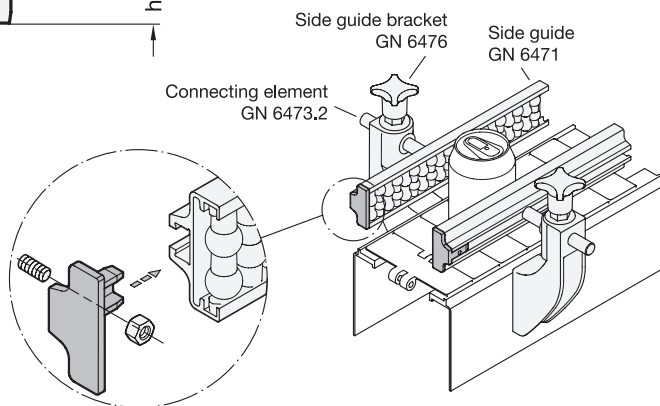


1 Identification no.

- 1 Single row
- 2 Double row



Application example



2

l_1	b_1	b_2	d_1	d_2	h_1	Id. no. 1		Id. no. 2		h_2	h_3	h_4	h_5	l_2	l_3	m_1		
																	Id. no. 1	Id. no. 2
24	8	13,5	2,5	M 5	47,5		93			13,5	3,5	3	13,5	10,8	3,2		40,9	86

Specification

End cap

Plastic, polyamide

PA

• Operating temperature -30 °C to +100 °C

• Gray

● **GR**

Grub screw / Nut

Stainless steel AISI 304

RoHS

End caps GN 6471.2 extend side guides GN 6471. They ensure an attractive appearance and protect against injuries or damage to the conveyed goods. They are mounted on the end face by sliding into the T-slot of the side guide using the supplied grub screw.

see also...

	Page
GN 6471 Side Guides	12
GN 6476 Side Guide Brackets	33
GN 6473.2 Connecting Elements	25

Technical Information

Plastic Characteristics

Catalogue 2158

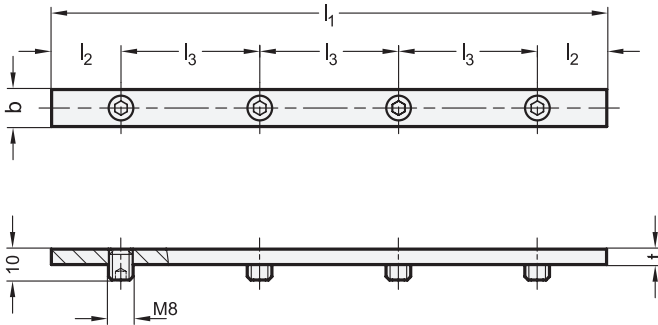
Stainless Steel Characteristics

Catalogue 2166

How to order

GN6471.2-2-24-PA-GR

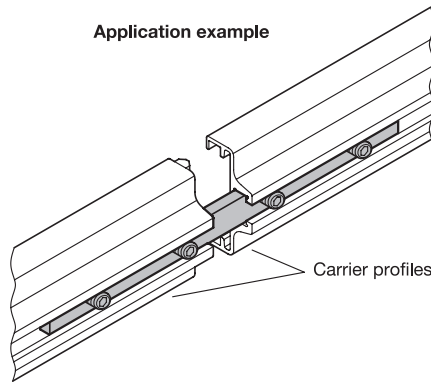
- 1 Identification no.
- 2 l_1
- 3 Material
- 4 Color



elesa
Original design BDG-SST



Application example



Carrier profiles

1 b	2 l ₁	l ₂	l ₃	t
12	180	22,5	45	5

Specification

Stainless steel AISI 304

RoHS



NI

Connecting strips GN 6471.3 are used to extend or connect side guides GN 6471 and GN 6472. They are mounted on the end face by sliding into the T-slots of the side guide to be connected using the supplied grub screws.

see also...

	Page
GN 6471 Side Guides	12
GN 6472 Side Guides	18

Technical Information

Stainless Steel Characteristics

Catalogue 2166

How to order

GN 6471.3-12-180-NI

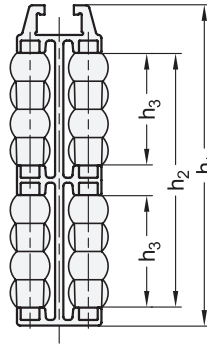
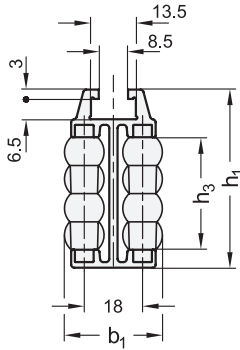
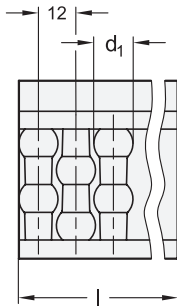
1	b
2	l ₁
3	Material



Identification no. 1

Identification no. 2

Type K



elesa

Original design GCA-2 / GCA-4

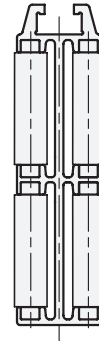
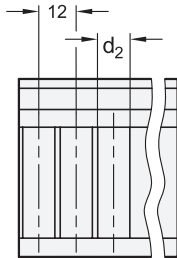
1 Type

- K Ball-shaped rollers
- Z Cylindrical rollers
- ZA Cylindrically offset rollers

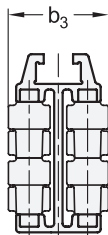
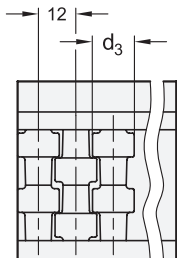
2 Identification no.

- 1 Single row
- 2 Double row

Type Z

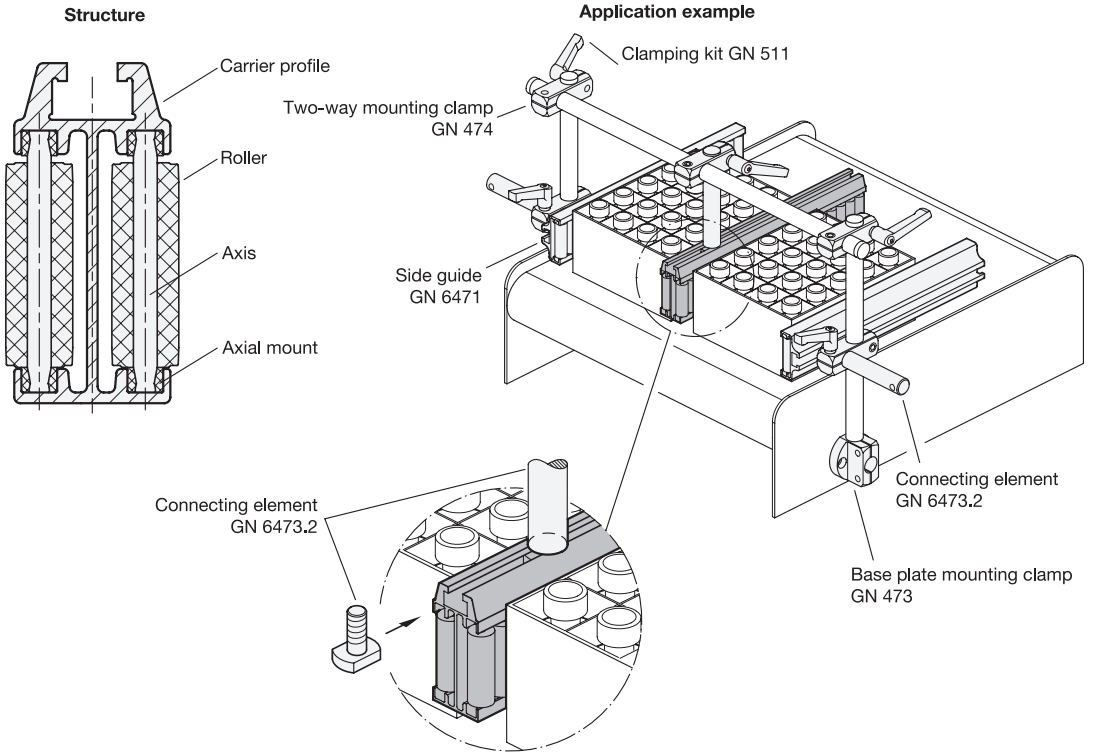


Type ZA



3

Length l		b ₁	b ₂	b ₃	d ₁	d ₂	d ₃	h ₁		h ₂	h ₃	Packaging unit
								Id. no. 1	Id. no. 2			
1440	3000	30,5	29,5	31,5	12,5	11,25	13,5	57	102,5	80	36	2



Specification



Carrier profile

Aluminum **AL**
Anodized, natural color

Rollers

Plastic, polyethylene (PE)
• Operating temperature -20 °C to 90 °C
• Gray **GR**

Axis

Stainless steel AISI 304

Axial mount

Plastic, polyacetal (POM)
• Operating temperature -20 °C to 90 °C
• White

RoHS

Accessory

Page

GN 6472.1 Lead-In Guides	20
GN 6472.2 End Caps	21
GN 6471.3 Connecting Strips	16
GN 6473.2 Connecting Elements	25

Side guides GN 6472 are installed in the middle of conveyor sections and their rollers guide the conveyed goods without damage.

The type of rollers used depends on the conveyed material. Type K is used for cans and plastic boxes. For cardboard boxes, type Z can be used for an even material flow. For containers of glass, type ZA is used since it allows easy removal of any contamination due to glass breakage.

Side guides are fastened on the top side via the T-slot. Connecting element GN 6473.2 can be used for this purpose, for example.

The side guides are delivered in packaging units of 2 pieces each. They can be shortened in increments of 120 mm.

see also...

Page

GN 6471 Side Guides	12
---------------------	----

Technical Information

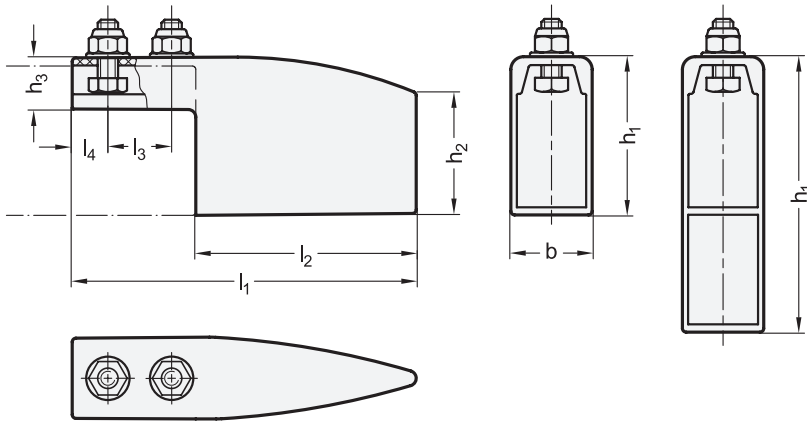
Plastic Characteristics	Catalogue 2158
Stainless Steel Characteristics	Catalogue 2166

How to order

1 Type
2 Identification no.
3 Length l
4 Material
5 Color

GN 6472-K-1-1440-AL-GR

Identification no. 1 Identification no. 2



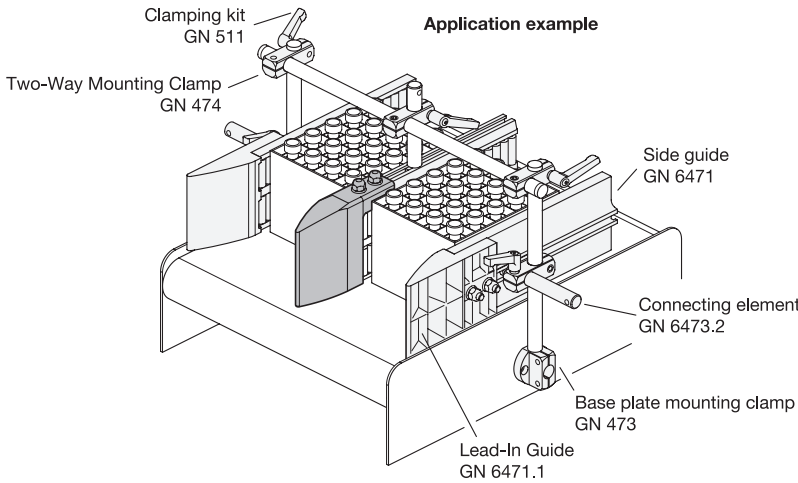
elesa
Original design PGC-2 / PGC-4



1 Identification no.

- 1 Single row
- 2 Double row

Application example



2

l_1	b	h_1	h_2		h_3	l_2	l_3	l_4	
		ld. no. 1	ld. no. 2	ld. no. 1	ld. no. 2				
135	32	62	107,7	48	93,7	20,5	85	25	14

Specification

Guide

Plastic, Polyethylene **PE**
 • Operating temperature -20 °C to 90 °C
 • Gray **GR**

Hex head screws / Nuts

Stainless steel AISI 304

RoHS

3

4

Lead-in guides GN 6472.1 extend side guides GN 6472 and ensure a smooth material flow. They are mounted on the end face by sliding into the T-slot of the side guide using the supplied nuts.

see also...

GN 6472 Side Guides

Page

18

Technical Information

Plastic Characteristics

Catalogue 2158

Stainless Steel Characteristics

Catalogue 2166

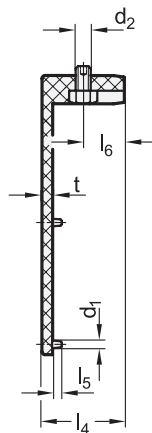
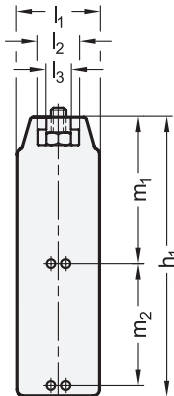
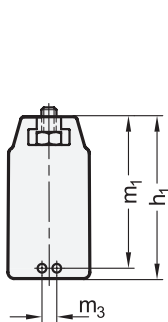
How to order

1	Identification no.
2	l_1
3	Material
4	Color

GN 6472.1-1-135-PE-GR

Identification no. 1

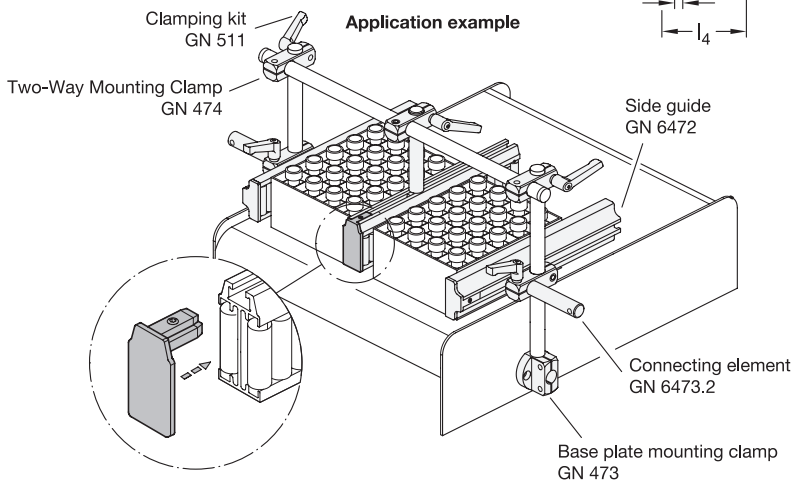
Identification no. 2



elesa
Original design TGL

Identification no.

- 1 Single row
- 2 Double row



2

l_1	d_1	d_2	h_1	Id. no. 1	Id. no. 2	l_2	l_3	l_4	l_5	l_6	m_1	m_2	m_3	t
26	2,5	M 5	57,4	102,7	13,5	8	27	3	13,5	53,7	45,7	4,7	3,5	

Specification

End cap

Plastic, polyamide

PA

- Operating temperature -30 °C to +100 °C
- Gray

GR

Grub screw / Nut

Stainless steel AISI 304

RoHS

3

4

End caps GN 6472.2 extend side guides GN 6472. They ensure an attractive appearance and protect against injuries or damage to the conveyed goods. They are mounted on the end face by sliding into the T-slot of the side guide using the supplied grub screw.

see also...

GN 6472 Side Guides

Page

21

Technical Information

Plastic Characteristics

Catalogue 2158

Stainless Steel Characteristics

Catalogue 2166

How to order

GN 6472.2-2-26-PA-GR

1 Identification no.

2 l_1

3 Material

4 Color

1

2

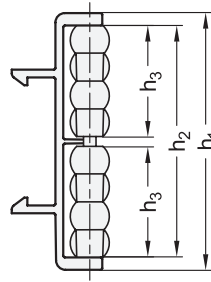
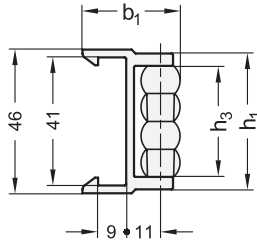
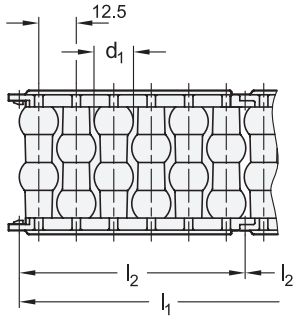
3

4

Type **K**

Identification no. **1**

Identification no. **2**



elesa

Original design GLB-1 / GLB-2



Inox
Stainless
Steel

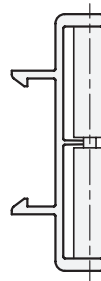
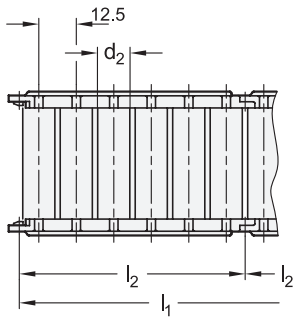
1 Type

- K** Ball-shaped rollers
- Z** Cylindrical rollers
- ZA** Cylindrically offset rollers

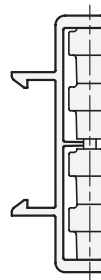
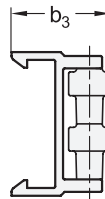
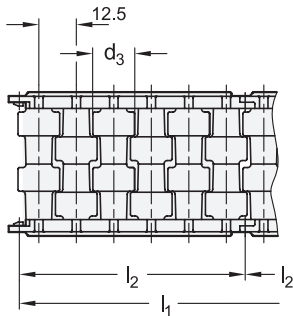
2 Identification no.

- 1** Single row
- 2** Double row

Type **Z**

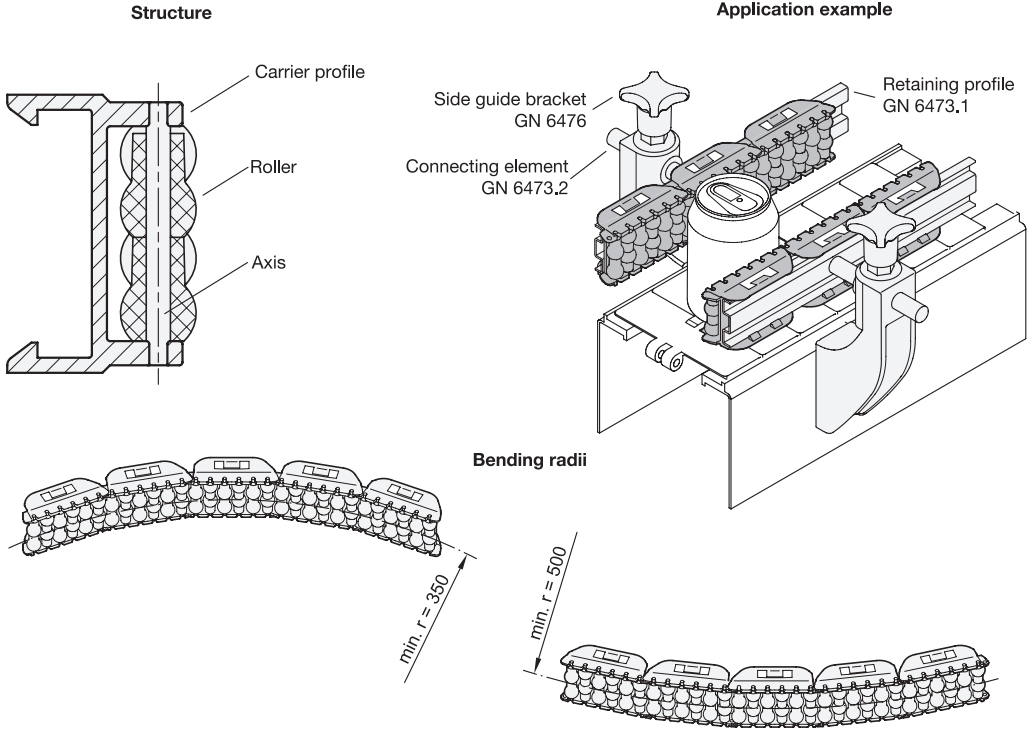


Type **ZA**



3

l_1	b_1	b_2	b_3	d_1	d_2	d_3	h_1		h_2	h_3	l_2
							Id. no. 1	Id. no. 2			
375	31,2	30,6	31,75	12,5	11,25	13,5	44	79,8	71,8	35,5	75



Specification



Carrier profile segment

Plastic, polyacetal **POM**
Black

Rollers

Plastic, polyethylene (PE)
• Operating temperature -20 °C to 90 °C
• Gray **GR**

Axis

Stainless steel AISI 304

RoHS

Accessory

Page

GN 6473.1 Retaining Profiles	24
GN 6473.2 Connecting Elements	25

Side guide segments GN 6473 are attached to the sides of conveyor sections, and their rollers guide the conveyed goods without damage. Due to their segmentation, they are particularly suited for use on curves.

The type of rollers used depends on the conveyed material. Type K is used for cans and plastic boxes. For cardboard boxes, type Z can be used for an even material flow. For containers of glass, type ZA is used since it allows easy removal of any contamination due to glass breakage.

Fastening is carried out with retaining profiles GN 6473.1, which are attached to conveyor systems with connecting elements GN 6473.2. Included are 5 segments with total length l_1 .

see also...

Page

GN 6471 Side Guides	12
GN 6472 Side Guides	18

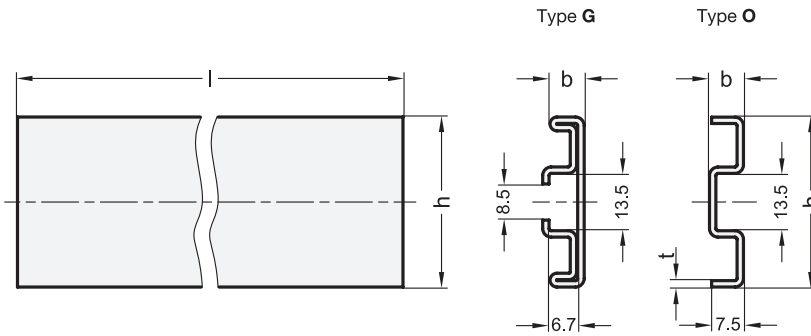
Technical Information

Plastic Characteristics	Catalogue 2158
Stainless Steel Characteristics	Catalogue 2166

How to order

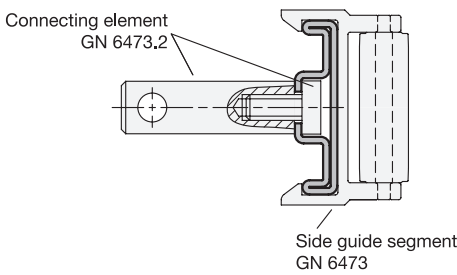
	1 Type
	2 Identification no.
	3 l_1
	4 Material
	5 Color

GN6473-Z-2-375-POM-GR



- 1 Type**
- O** Open
 - G** Closed

Application example



2 h	3 Length l		b	t	Packaging unit
40	1500	3000	8	1,5	2

Specification

Stainless steel AISI 304

RoHS

4 NI

Retaining profiles GN 6473.1 are required to fasten side guide segments GN 6473. Connecting elements GN 6473.2 are used for the installation on conveyor sections and the like.

Retaining profile type G can be installed without alteration. For type O, the user must create the bores as needed.

The retaining profiles are delivered in packaging units of 2 pieces each. They can be shortened as needed.

see also...	Page
GN 6473 Side Guide Segments	22

Technical Information

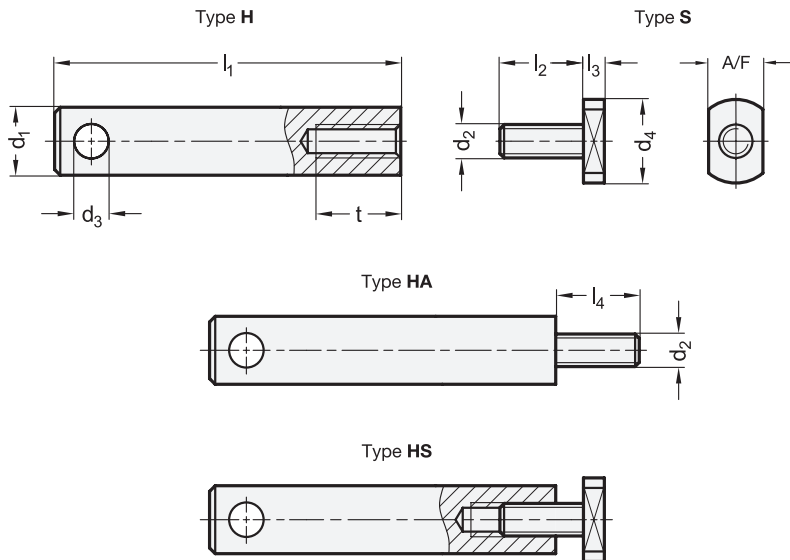
Stainless Steel Characteristics Catalogue 2166

Accessory

GN 6473.2 Connecting Elements	25
--------------------------------------	----

How to order	1 Type
2 h	h
3 Length l	Length l
4 Material	Material

GN 6473.1-G-40-3000-NI

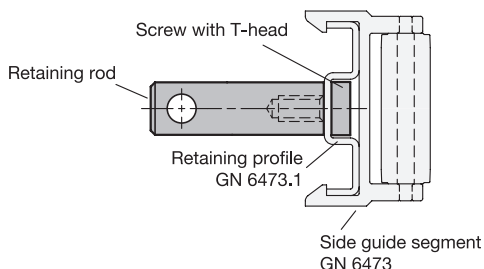


elesa
Original design MPG-V / MPG-P



- 1 Type**
- H** Retaining rod with internal thread
 - HA** Retaining rod with threaded stud
 - S** Screw with T-head
 - HS** Retaining set

Application example



2

d₁ Type H / HA / HS			d₂ Type H / S / HS		Type HA	d₃	d₄	l₁	l₃	l₄	A/F	t
D 12	D 14	D 16	M 8	M 10		6	20	100	5	17	13	20

Specification

Stainless steel AISI 304

3

NI

RoHS

Technical Information

Page

Stainless Steel Characteristics

Catalogue 2166

Connecting elements GN 6473.2 fasten side guides or retaining profiles for side guide segments on conveyor sections. This also requires the use of side guide brackets GN 6476, GN 6476.2 or GN 6476.3.

see also...

	Page
GN 6471 Side Guides	12
GN 6472 Side Guides	18
GN 6473.1 Retaining Profiles	24
GN 6476 / GN 6476.2 / GN 6476.3 Side Guide Brackets	33 ff.

How to order (Type S)

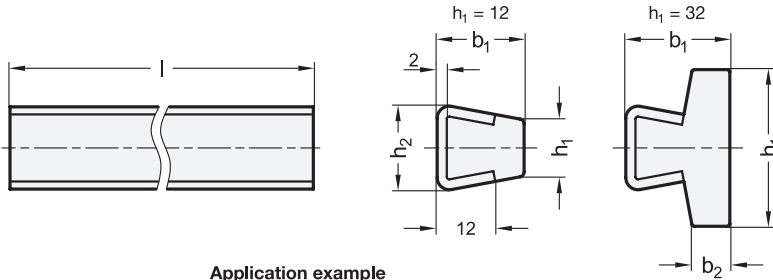
GN 6473.2-S-NI

- 1 Type**
- 3 Material**

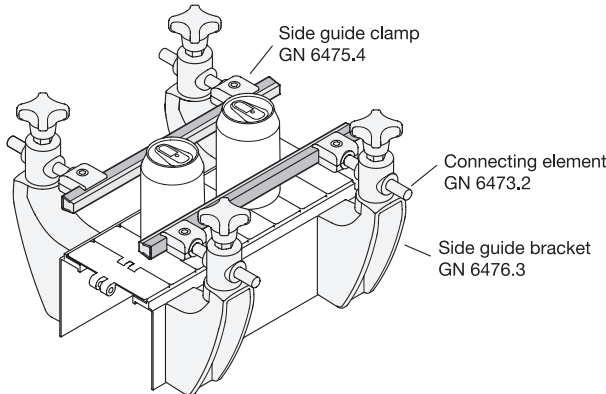
How to order (Type H / HA / HS)

GN 6473.2-HS-D14-NI

- 1 Type**
- 2 d₁**
- 3 Material**



Application example



elesa
Original design GLP / GLP-HT



1 Type
T Retaining profile trapezoidal

h₁		Length l		b₁	h₂	b₂	Packaging unit
Nominal size	Actual dimension						
12	11,6	1500	3000	18	17	-	2
32*	31,7	1500	3000	21	17	7,6	2

* Only available in PE

Specification

Guide profile

- Plastic, polyethylene **PE**
 - Operating temperature -20 °C to +90 °C
 - Shock resistant
 - White
- Plastic, polytetrafluorethylene (PTFE) **HT**
 - Operating temperature -200 °C to +260 °C
 - Shock resistant
 - White

Retaining profile

Stainless steel AISI 304

RoHS

Accessory

	Page
GN 6475.3 Side Guide Clamps	29
GN 6475.4 Side Guide Clamps	30
GN 6475.5 Side Guide Clamps	31

Side guides GN 6475 are attached to the sides of conveyor sections and guide the conveyed goods smoothly without damage. Due to the materials used, the side guides are ideal for use in corrosive environments. They are fastened using the trapezoidal retaining profile with side guide clamps GN 6475.3, GN 6475.4 or GN 6475.5.

The side guides are delivered in packaging units of 2 pieces each. They can be shortened as needed.

see also...

	Page
GN 6475.1 Side Guides (Guide Contour Rounded)	27
GN 6475.2 Side Guides (Guide Contour Flat, Stepped)	28
GN 6476 Side Guide Brackets (Rigid, with Contact Edge)	33
GN 6476.2 Side Guide Brackets (Swiveling, with Contact Edge)	34
GN 6476.3 Side Guide Brackets (Swiveling)	35

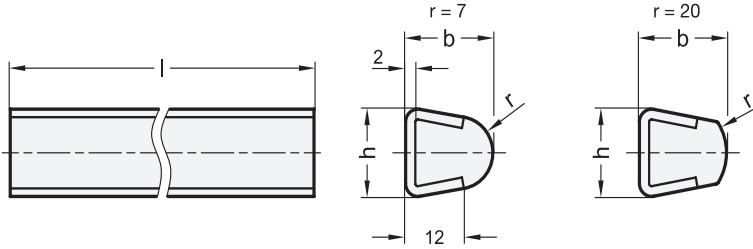
Technical Information

Plastic Characteristics	Catalogue 2158
Stainless Steel Characteristics	Catalogue 2166

How to order

1 Type
2 h ₁ (Nominal size)
3 Length l
4 b ₁
5 Material

GN 6475-T-12-1500-18-HT

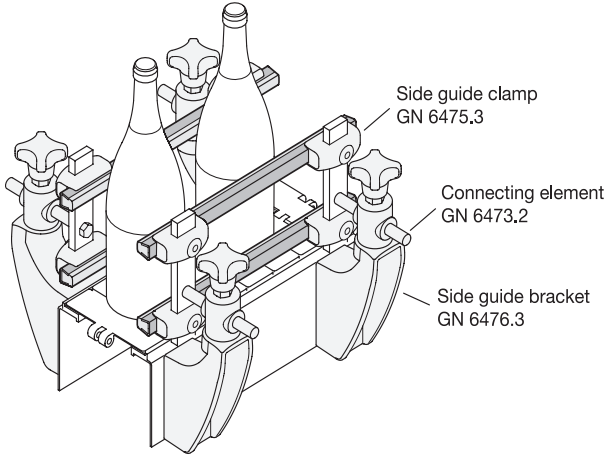


elesa
Original design GLR / GLT



1 Type
T Retaining profile trapezoidal

Application example



2		3		4		
r	Length l	b	h	Packaging unit		
7	20	1500	3000	18	17	2

Specification

Guide profile

- Plastic, polyethylene (PE)
- Operating temperature -20 °C to +90 °C
- Shock resistant
- White

Retaining profile

Stainless steel AISI 304

RoHS

Accessory

Page

GN 6475.3 Side Guide Clamps	29
GN 6475.4 Side Guide Clamps	30
GN 6475.5 Side Guide Clamps	31

Side guides GN 6475.1 are attached to the sides of conveyor sections and guide the conveyed goods smoothly without damage. The rounded guide contour establishes line contact with the conveyed goods.

Due to the materials used, the side guides are ideal for use in corrosive environments. They are fastened using the trapezoidal retaining profile with side guide clamps GN 6475.3, GN 6475.4 or GN 6475.5.

The side guides are delivered in packaging units of 2 pieces each. They can be shortened as needed.

see also...

	Page
GN 6475 Side Guides (Guide Contour Flat)	26
GN 6475.2 Side Guides (Guide Contour Flat, Stepped)	28
GN 6476 Side Guide Brackets (Rigid, with Contact Edge)	33
GN 6476.2 Side Guide Brackets (Swiveling, with Contact Edge)	34
GN 6476.3 Side Guide Brackets (Swiveling)	35

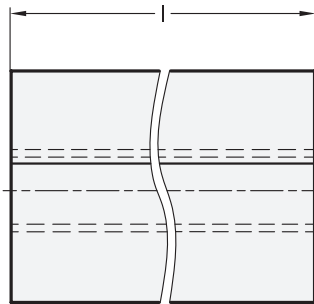
Technical Information

Plastic Characteristics	Catalogue 2158
Stainless Steel Characteristics	Catalogue 2166

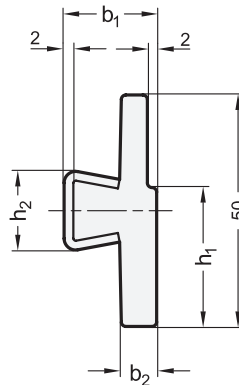
How to order

1 Type
2 r
3 Length l
4 b

GN 6475.1-T-20-3000-18



Application example

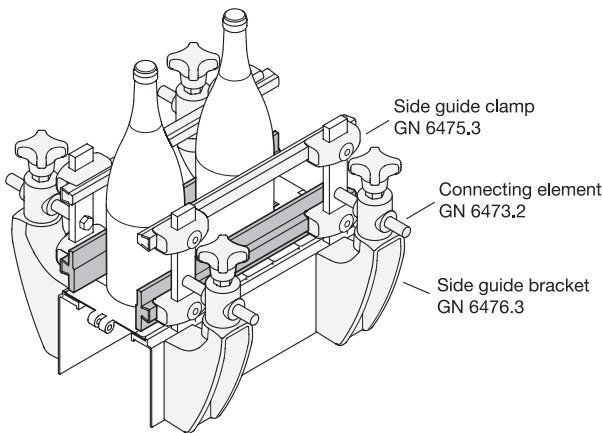


elesa
Original design GLS

Rost fre!
Inox
Stainless
Steel

1 Type

T Retaining profile trapezoidal



2 h_1	3 Length l	4 b_1	b_2	h_2	Packaging unit
30	1500 3000	20	8	17	2

Specification

Guide profile

- Plastic, polyethylene (PE)
- Operating temperature -20 °C to +90 °C
- Shock resistant
- White

Retaining profile

Stainless steel AISI 304

RoHS

Technical Information	Page
Plastic Characteristics	Catalogue 2158
Stainless Steel Characteristics	Catalogue 2166

Accessory

GN 6475.3 Side Guide Clamps	29
GN 6475.4 Side Guide Clamps	30
GN 6475.5 Side Guide Clamps	31

Side guides GN 6475.2 are attached to the sides of conveyor sections and guide the conveyed goods smoothly without damage. The stepped guide contour reduces the contact surface with the conveyed goods. Due to the materials used, the side guides are ideal for use in corrosive environments. They are fastened using the trapezoidal retaining profile with side guide clamps GN 6475.3, GN 6475.4 or GN 6475.5.

The side guides are delivered in packaging units of 2 pieces each. They can be shortened as needed.

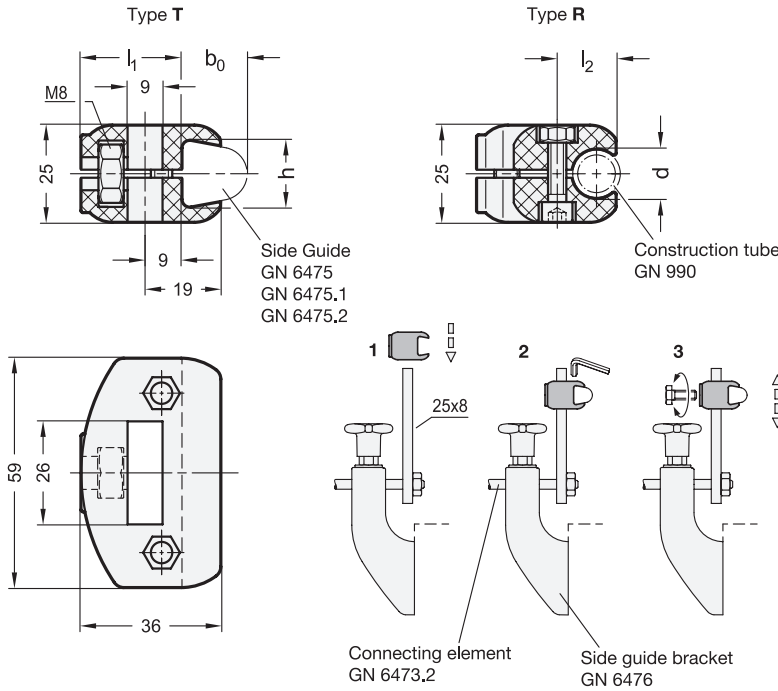
see also...

	Page
GN 6475 Side Guides (Guide Contour Flat)	26
GN 6475.1 Side Guides (Guide Contour Rounded)	27
GN 6476 Side Guide Brackets (Rigid, with Contact Edge)	33
GN 6476.2 Side Guide Brackets (Swiveling, with Contact Edge)	34
GN 6476.3 Side Guide Brackets (Swiveling)	35

How to order

1 Type
2 h_1
3 Length l
4 b_1

GN 6475.2-T-30-1500-20



elesa
Original design MPG-T / MPG-C



1 Type

- T** Retaining profile trapezoidal
- R** Retaining profile round

2

d			h	b₀			l₁	l₂
Type R			Type T	GN 6475	GN 6475.1	GN 6475.2		
B 10	B 12	B 14	17	18 / 21	18	20	26	15

Specification

Clamp

- Plastic, polyamide (PA)
- Operating temperature -30 °C to +100 °C
- Shock resistant
- Black

Socket cap screws / Nuts

Stainless steel AISI 304

RoHS

Technical Information

Page

- Plastic Characteristics Catalogue 2158
- Stainless Steel Characteristics Catalogue 2166

Side guide clamps GN 6475.3 attach side guides to conveyor sections. This also requires the use of flat steel bars 25x8, connecting elements GN 6473.2 and side guide holders GN 6476, GN 6476.2 or GN 6476.3. Multiple side guides can be attached on top of each other.

The side guide is clamped using the socket cap screws. A screw on the application side is required for mounting on the flat bar.

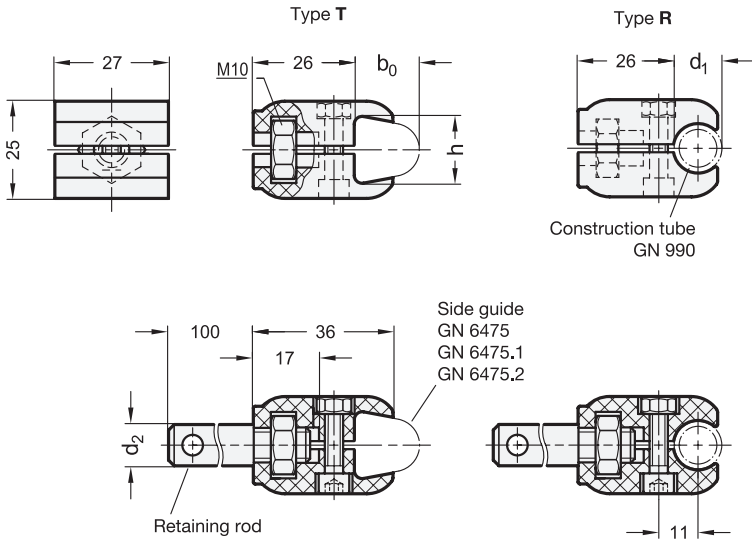
see also...

	Page
GN 6475 Side Guides (Guide Contour Flat)	26
GN 6475.1 Side Guides (Guide Contour Rounded)	27
GN 6475.2 Side Guides (Guide Contour Flat, Stepped)	28
GN 6473.2 Connecting Elements	25
GN 6476 Side Guide Brackets (Rigid, with Contact Edge)	33
GN 6476.2 Side Guide Brackets (Swiveling, with Contact Edge)	34
GN 6476.3 Side Guide Brackets (Swiveling)	35
GN 990 Construction Tubes	Catalogue 1835

How to order

GN 6475.3-R-B10

1	Type
2	d (h)



elesa
Original design MPG-C / MPG-T



- 1** Type
T Retaining profile trapezoidal
R Retaining profile round

2 d_1 Type R			2 h Type T	3 d_2 Retaining rod			b_0 GN 6475 GN 6475.1 GN 6475.2		
B 10	B 12	B 14	17	D 12	D 14	D 16	18 / 21	18	20

Specification

Clamp

- Plastic, polyamide (PA)
- Operating temperature -30 °C to +100 °C
- Shock resistant
- Black

Retaining rod / Socket cap screws / Nuts

Stainless steel AISI 304

RoHS

Technical Information **Page**

Plastic Characteristics	Catalogue 2158
Stainless Steel Characteristics	Catalogue 2166

Side guide clamps GN 6475.4 attach side guides to conveyor sections. The version with retaining rod additionally requires the use of side guide holders GN 6476, GN 6476.2 or GN 6476.3. The version with an internal thread enables direct mounting, for example on a side wall.

see also...

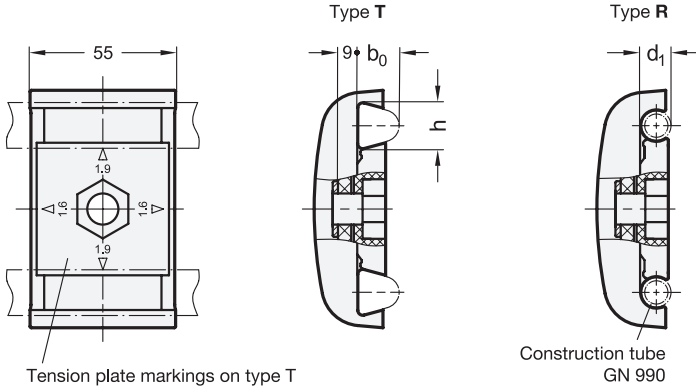
	Page
GN 6475 Side Guides (Guide Contour Flat)	26
GN 6475.1 Side Guides (Guide Contour Rounded)	27
GN 6475.2 Side Guides (Guide Contour Flat, Stepped)	28
GN 6476 Side Guide Brackets (Rigid, with Contact Edge)	33
GN 6476.2 Side Guide Brackets (Swiveling, with Contact Edge)	34
GN 6476.3 Side Guide Brackets (Swiveling)	35
GN 990 Construction Tubes	Catalogue 1835

How to order (Without retaining rod)

1 2	1 Type
	2 h (d_1)
GN 6475.4-T-17	

How to order (With retaining rod)

1 2 3	1 Type
	2 d_1 (h)
	3 d_2
GN 6475.4-R-B10-D16	



Tension plate markings on type T

Construction tube GN 990



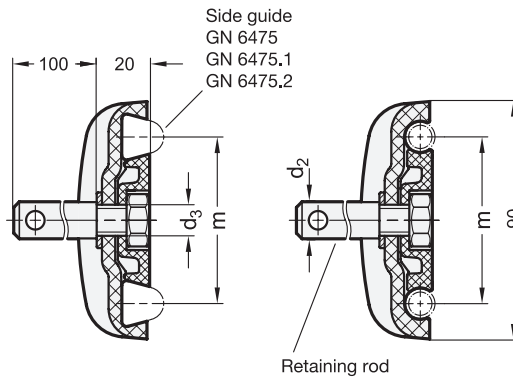
elesa

Original design MPG-2T / MPG-2T-P



1 Type

- T Retaining profile trapezoidal
- R Retaining profile round



Side guide GN 6475 GN 6475.1 GN 6475.2

Retaining rod

2 d₁		2 h		3 d₂			b₀			d₃		m		
Type R	Type T	Retaining rod		GN 6475	GN 6475.1	GN 6475.2			M 10	Type T	Type R			
B 12	17	D 12	D 14	D 16	18 / 21	18	20				64	67		

Specification

Clamp

- Plastic, polyamide (PA)
- Operating temperature -30 °C to +100 °C
- Shock resistant
- Black

Retaining rod / Nut

Stainless steel AISI 304

RoHS

Technical Information

Page

Plastic Characteristics	Catalogue 2158
Stainless Steel Characteristics	Catalogue 2166

Side guide clamps GN 6475.5 attach two side guides at once to conveyor sections. The version with retaining rod additionally requires the use of side guide holders GN 6476, GN 6476.2 or GN 6476.3. The version with an internal thread enables direct mounting, for example on a side wall. When installing type T, the “1.9” markings on the tension plate must point towards the side guides as shown in the drawing.

see also...

	Page
GN 6475 Side Guides (Guide Contour Flat)	26
GN 6475.1 Side Guides (Guide Contour Rounded)	27
GN 6475.2 Side Guides (Guide Contour Flat, Stepped)	28
GN 6476 Side Guide Brackets (Rigid, with Contact Edge)	33
GN 6476.2 Side Guide Brackets (Swiveling, with Contact Edge)	34
GN 6476.3 Side Guide Brackets (Swiveling)	35
GN 990 Construction Tubes	Catalogue 1835

How to order (Without retaining rod)

GN 6475.5-R-B12	1	Type
	2	d ₁ (h)

How to order (With retaining rod)

GN 6475.5-T-17-D14	1	Type
	2	h (d ₁)
	3	d ₂

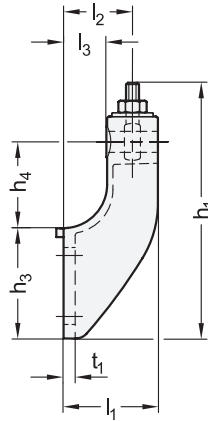
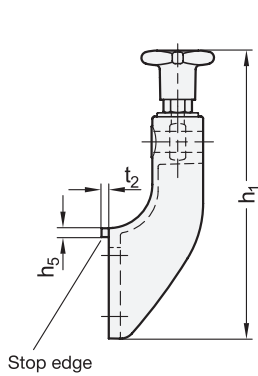
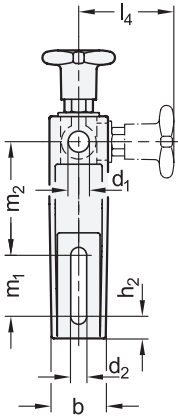


Page

GN 6476 Side Guide Brackets (Fixed, with Contact Edge)	33
GN 6476.2 Side Guide Brackets (Swiveling, with Contact Edge)	34
GN 6476.3 Side Guide Brackets (Swiveling, without Contact Edge)	35

Identification no. 1

Identification no. 2



elesa

Original design SPF.V / SPF.D

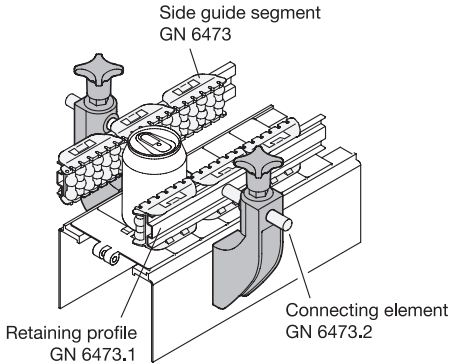


Inox
Stainless
Steel

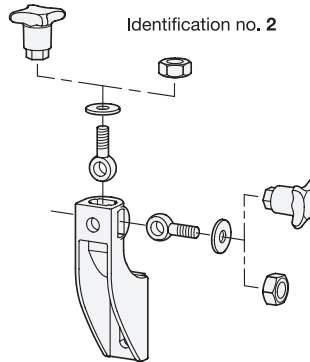
1 Identification no.

- 1 With hand knob
- 2 Without hand knob

Application example



Identification no. 1



2

3

d₁			h₁		b	d₂	h₂	h₃	h₄	h₅	l₁	l₂	l₃	l₄	m₁	m₂	t₁	t₂
			Id. no. 1	Id. no. 2														
D 12	D 14	D 16	198	173	37	11	15	76	60	4	65	47	30	63	42	79	8	2,5

Specification

Bracket

- Plastic, polyamide (PA)
- Glass fiber reinforced
- Operating temperature -30 °C to +100 °C
- Black, matte finish

Hand knob (identification no. 1)

- Plastic, polyamide (PA)
- Glass fiber reinforced
- Black, matte finish
- Threaded bushing, brass

Hex nut (identification no. 2)

Stainless steel AISI 304

Swing bolt / Washer

Stainless steel AISI 304

RoHS

Side guide brackets GN 6476 fasten side guides or side guide segments to conveyor sections. This also requires the use of connecting elements GN 6473.2, retaining profiles GN 6473.1 or side guide clamps GN 6475.3, GN 6475.4 or GN 6475.5.

The stop edge facilitates horizontal alignment on the conveyor system. The swing bolt with the hand knob or the hex nut can be attached to the side guide bracket either on top or on the side to respond to different space conditions.

see also...

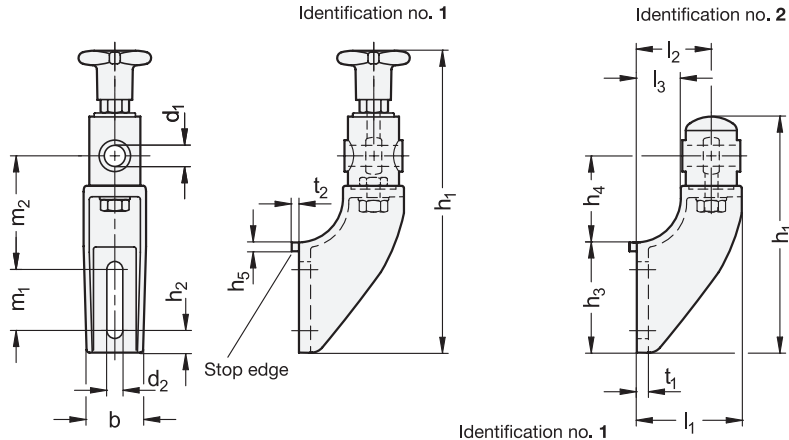
	Page
GN 6471 Side Guides (Cylinder and Ball Rollers on One Side)	12
GN 6472 Side Guides (Cylinder and Ball Rollers on Two Side)	18
GN 6473 Side Guide Segments (Cylinder and Ball Rollers on One Side for Curves)	22
GN 6473.2 Connecting Elements	25

Technical Information	Page
Plastic Characteristics	Catalogue 2158
Stainless Steel Characteristics	Catalogue 2166

How to order

GN 6476-1-D12-198

1	Identification no.
2	d₁
3	h₁

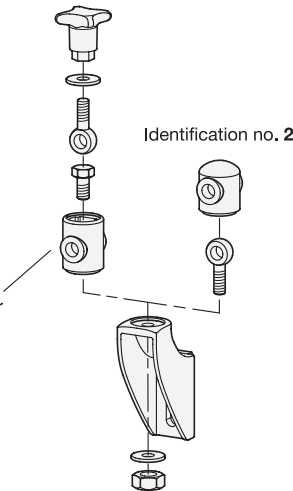
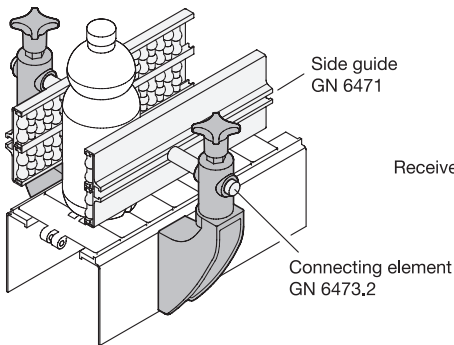


elesa
Original design SPR-A / SPR.V-A



- 1 Identification no.**
- 1 With hand knob
 - 2 Without hand knob

Application example



d ₁			h ₁		b	d ₂	h ₂	h ₃	h ₄	h ₅	l ₁	l ₂	l ₃	m ₁	m ₂	t ₁	t ₂
D 12	D 14	D 16	ld. no. 1	ld. no. 2													
12	14	16	203	158	37	11	15	76	60	4	70	50	30	42	79	8	2,5

Specification

Bracket / Receiver

- Plastic, polyamide (PA)
- Glass fiber reinforced
- Operating temperature -30 °C to +100 °C
- Black, matte finish

Hand knob (identification no. 1)

- Plastic, polyamide (PA)
- Glass fiber reinforced
- Black, matte finish
- Threaded bushing, brass
- Hex head screw, stainless steel AISI 304

Swing bolt / Hex nut / Washer

Stainless steel AISI 304

RoHS

Technical Information	Page
Plastic Characteristics	Catalogue 2158
Stainless Steel Characteristics	Catalogue 2166

Side guide brackets GN 6476.2 fasten side guides or side guide segments to conveyor sections. This also requires the use of connecting elements GN 6473.2, retaining profiles GN 6473.1 or side guide clamps GN 6475.3, GN 6475.4 or GN 6475.5.

The stop edge facilitates horizontal alignment on the conveyor system. The swiveling receiver also allows side guides to be mounted that are not perpendicular to the mounting surface of the bracket. Clamping is carried out without tools.

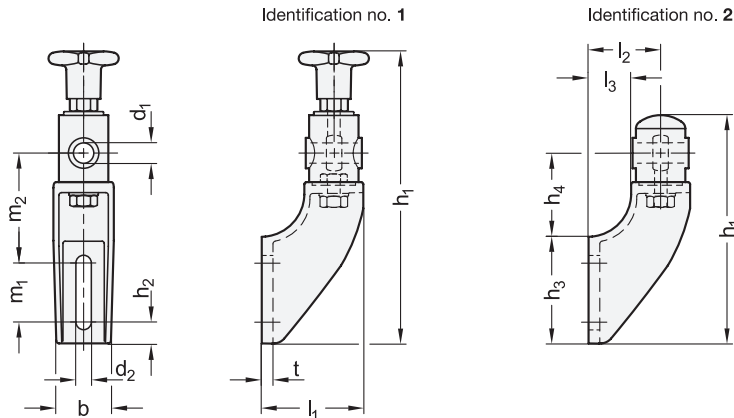
see also...

	Page
GN 6471 Side Guides (Cylinder and Ball Rollers on One Side)	12
GN 6472 Side Guides (Cylinder and Ball Rollers on Two Side)	18
GN 6473 Side Guide Segments (Cylinder and Ball Rollers on One Side for Curves)	22

How to order

GN 6476.2-2-D14-158

1	Identification no.
2	d ₁
3	h ₁



elesa

Original design SPR-B / SPR.V-B

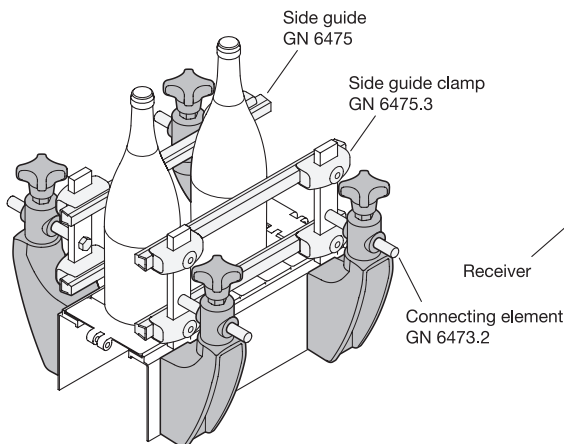


Inox
Stainless
Steel

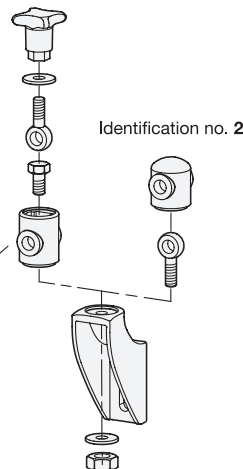
1 Identification no.

- 1 With hand knob
- 2 Without hand knob

Application example



Identification no. 1



d₁			h₁		b	d₂	h₂	h₃	h₄	l₁	l₂	l₃	m₁	m₂	t
D 12	D 14	D 16	ld. no. 1	ld. no. 2											
D 12	D 14	D 16	238	193	41	11	11	100	70	85	64	43	69	90	8

Specification

Bracket / Receiver

- Plastic, polyamide (PA)
- Glass fiber reinforced
- Operating temperature -30 °C to +100 °C
- Black, matte finish

Hand knob (identification no. 1)

- Plastic, polyamide (PA)
- Glass fiber reinforced
- Black, matte finish
- Threaded bushing, brass
- Hex head screw, stainless steel AISI 304

Swing bolt / Hex nut / Washer

Stainless steel AISI 304

RoHS

Technical Information

Page

- Plastic Characteristics Catalogue 2158
- Stainless Steel Characteristics Catalogue 2166

Side guide brackets GN 6476.3 fasten side guides or side guide segments to conveyor sections. This also requires the use of connecting elements GN 6473.2, retaining profiles GN 6473.1 or side guide clamps GN 6475.3, GN 6475.4 or GN 6475.5.

The swiveling receiver also allows side guides to be mounted that are not perpendicular to the mounting surface of the bracket. Clamping is carried out without tools.

see also

Page

- GN 6471** Side Guides (Cylinder and Ball Rollers on One Side) 12
- GN 6472** Side Guides (Cylinder and Ball Rollers on Two Side) 18
- GN 6473** Side Guide Segments (Cylinder and Ball Rollers on One Side for Curves) 22

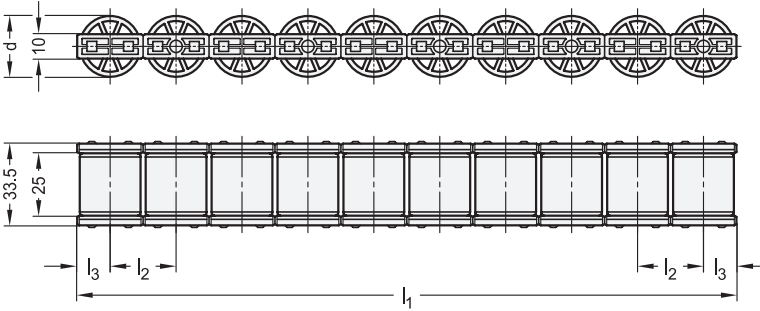
How to order

GN 6476.3-1-D16-238

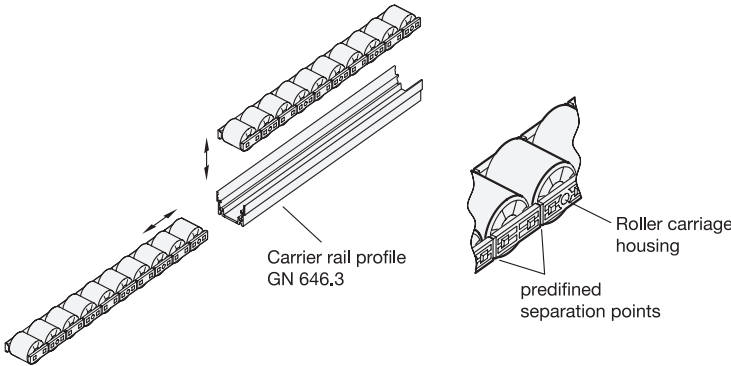
1 Identification no.

2 d₁

3 h₁



elesa
Original design RLT-U / RLT-U15



l ₁	l ₂	d	l ₃	Rollers per track	Load per track in N/m		per roller in N	
					PA	TPU	PA	TPU
270	15	14,5	7,5	18	13330	1333	200	20
270	27	25	13,5	10	13330	5550	360	150

Specification

Roller carriage housing

Plastic, polyacetal (POM)
black

Rollers

- Plastic, polyamide **PA**
 - black
 - Operating temperature -20 °C to +90 °C
- Plastic, thermoplastic polyurethane **TPU**
 - Gray
 - Operating temperature -20 °C to +70 °C
 - Elastic (92 Shore A)
 - Impact-proof

RoHS

On request

Rollers in other colors

Technical Information Page

Details on Load Capacity	43
Plastic Characteristics	Catalogue 2158

Used in aluminum carrier rail profiles GN 646.3, roller tracks GN 646.1 create roller rails for use e.g. in flow racks, packing and picking stations and for linking work processes.

The roller tracks are snapped vertically into the carrier rail profile or pushed in place in the axial direction. No mounting hardware is required. The tracks can be dismantled in reverse order which also allows individual roller tracks to be replaced easily.

The roller axles are made of plastic and so guarantee a quieter, low friction and maintenance-free function. The rollers made of elastic polyurethane (TPU) are used preferably for delicate material to be conveyed. If required, the roller tracks are easily separated at intervals of 27 mm. Used with carrier rail profiles cut to appropriate lengths, specific roller rail lengths can be created.

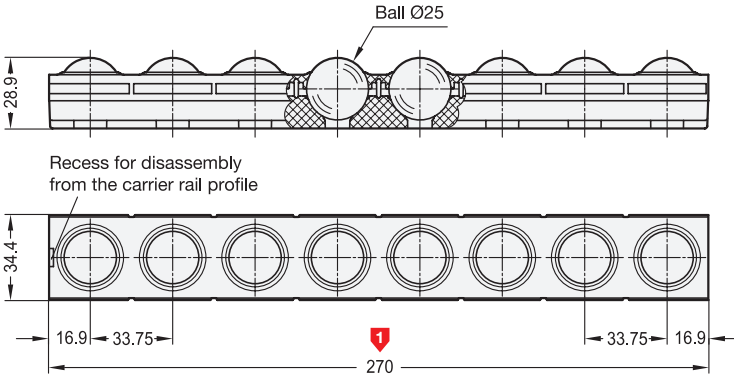
see also...

GN 646.2 Ball Track (for Multi-Directional Movement)	37
GN 646.3 Carrier Rail Profiles (Aluminum)	38

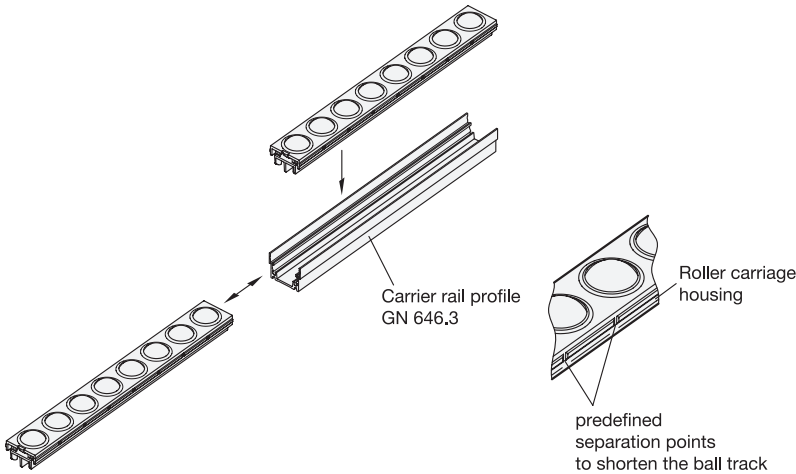
How to order

GN 646.1-270-27-TPU

1	l ₁
2	l ₂
3	Material



elesa
Original design RLS-U



Specification



Ball carriage housing

- Plastic, polyamide (PA)
- Black
- Operating temperature -20 °C to +60 °C

Balls

- Plastic, polyacetal
- White
- Operating temperature -20 °C to +60 °C

POM

RoHS

Used in carrier profiles GN 646.3, ball tracks GN 646.2 create ball rail assemblies for the “multi-directional” movement of material to be conveyed.

The ball track is snapped vertically into the carrier rail profile or pushed in place in axial direction. No mounting hardware is required. The tracks can be dismantled in reverse order only in axial direction.

Ball carriage housing and balls made of plastic guarantee low friction and maintenance-free function.

see also...

GN 646.1 Roller Tracks

Page

36

Technical Information

Details on Load Capacity

43

Plastic Characteristics

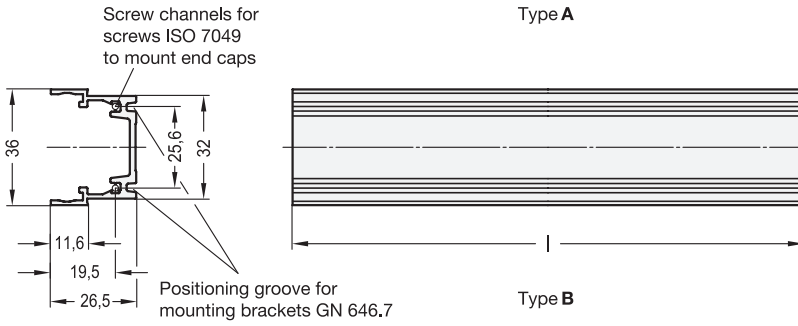
Catalogue 2158

How to order

GN 646.2-270-POM

1 Length

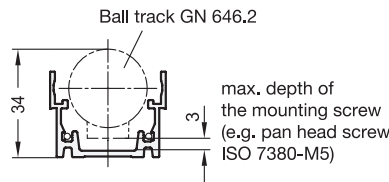
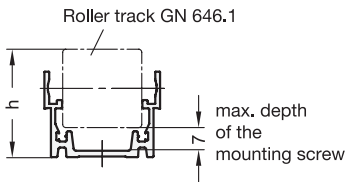
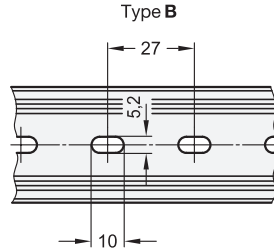
2 Material



elesa
Original design RLT-AL

2 Type

- A** Without mounting holes
- B** With mounting holes



Length l	h	
	for GN 646.1 (l ₂ =15)	for GN 646.1 (l ₂ =27)
270	29	34
540		
810		
1080		
1350		
1620		
1890		
2160		
2430		
2700		
2970		

Specification

Aluminum
Anodized, natural color
RoHS

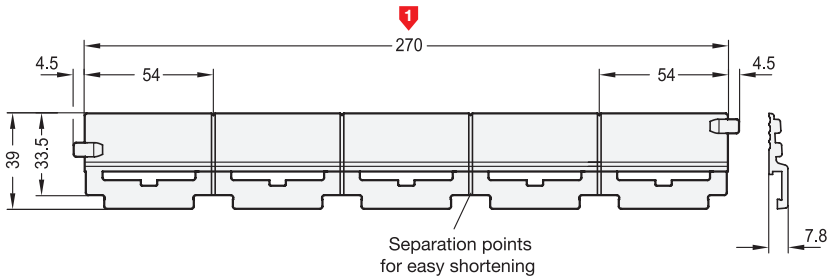
On request

Carrier profiles in in-between lengths (spacing 27)

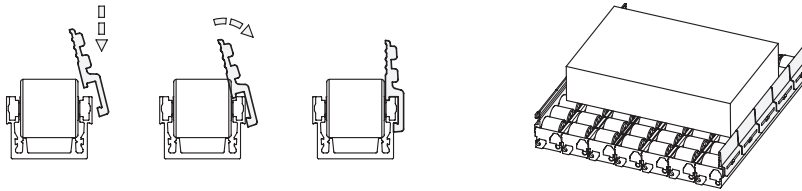
Carrier rail profiles GN 646.3 are the base components for roller tracks and ball tracks. They are the carrier channels for roller tracks GN 646.1 and for ball tracks GN 646.2 and feature a high degree of stiffness and rigidity. The carrier profile is designed such that roller and ball tracks and containment edge strips GN 646.4 can be assembled without mounting hardware. Using connectors GN 646.6 (Type C), the carrier rail profiles can be assembled together, to create longer profile extensions. The standard lengths match the 270 length of the roller and ball tracks. For type B, the position and edge spacing of the hole pattern is not defined.

see also...	Page
GN 646.1 Roller Tracks	36
Technische Informationen	
Details on Load Capacity	43

How to order	
GN 646.3-810-A	1 Length l
	2 Type



elesa
Original design RLT-CE



Specification

Plastic, polyamide (PA)

- Black
- Operating temperature -20 °C to +90 °C

RoHS

The containment edge strip GN 646.4 keeps the material conveyed within the range of the roller track assemblies.

They can be snapped onto existing roller track assemblies.

The containment edges are not designed for use with roller track assemblies (ball track).

see also...

GN 646.1 Roller Tracks

GN 646.3 Carrier Rail Profiles

Page

36

38

Technical Information

Plastic Characteristics

Catalogue 2158

How to order

GN 646.4-270

1 Length

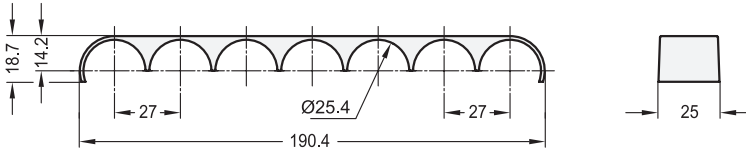


elesa
Original design RLT-B

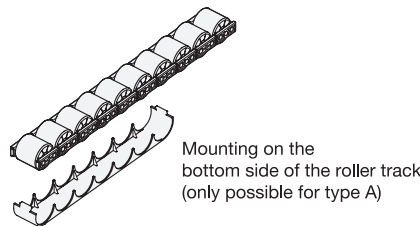
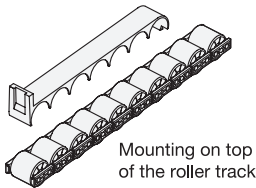
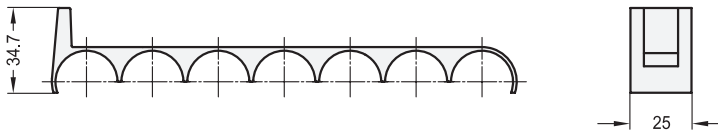
Type

- A Without stop
- B With stop

Type A : without stop



Type B : with stop



Specification

Plastic, polyamide (PA)

- Black
- Operating temperature -20 °C to +90 °C

RoHS

Brakes GN 646.5 will reduce the speed of the material conveyed, disrupt or stop the transporting altogether. They are mounted by snapping them into the roller track.

In type A (without stop), the brakes can also be mounted on the bottom side of the roller track. This, however, works only for roller tracks GN 646.1 made of polyurethane (TPU).

see also...

GN 646.1 Roller Tracks

Page

36

Technical Information

Plastic Characteristics

Catalogue 2158

How to order

GN646.5-A

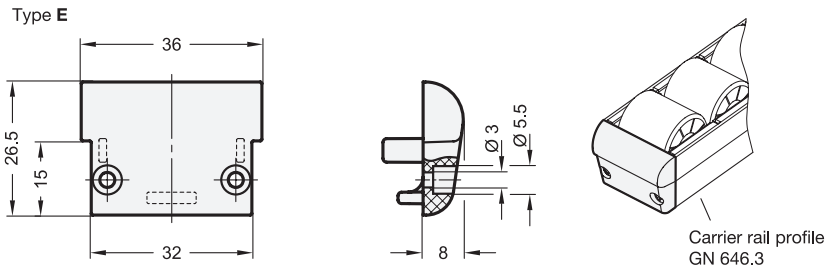
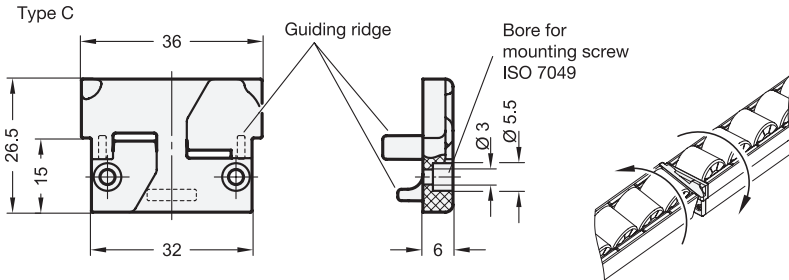
1 Type



elesa
Original design RLT-HJ/HE

Type

- C** Connector
- E** End cap



Specification

End cap

Plastic, polyamid (PA)

- Black
- Operating temperature -20 °C to +90 °C

Pan-head screws

Stainless steel

RoHS

Connectors GN 646.6 (Type C) can be used to create longer carrier profile extensions. Assembled with two screws at each profile end, the carrier profiles are interconnected without any further fastening hardware as shown in the drawing. The connecting point cannot carry any weight and must be supported from underneath.

End caps (Type E) are the preferred end finishing components for roller track or ball rail assemblies. They also cover the sharp edges of the carrier rail profiles, to create a clean, safe and finished look.

Two slotted pan-head screws ISO7049-ST2 9x13 for mounting the connectors and the end caps are included.

see also...	Page
GN 646.3 Carrier Rail Profile (Aluminum)	38

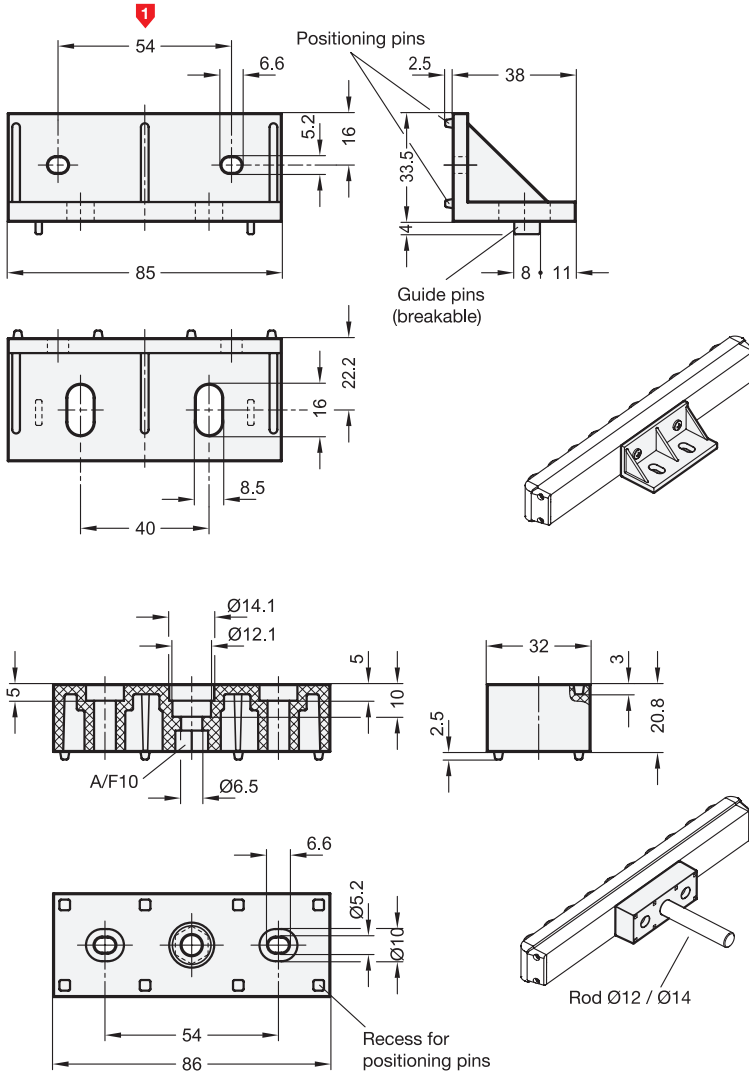
Technical Information

Plastic Characteristics	Catalogue 2158
-------------------------	----------------

How to order

GN 646.6-C

1 Type



elesa
Original design RLT-MB/MS

2 Type

- B** Block bracket
- W** Angle bracket

Specification

Plastic, polyamide (PA)

- Black
- Operating temperature -20 °C to +90 °C

RoHS

Technical Information

Page

Plastic Characteristics

Catalogue 2158

Mounting brackets GN 646.7 (Type W) can be used to mount roller rails at a right angle to the support surface, e.g. for the sideways transport of the conveyed material through roller rails. The positioning pins engage with the appropriate notches of the carrier rail profile GN 646.3 so that the angle is positioned in the correct location bracket and locked in place.

The mounting brackets (Type B) expand the mounting options for roller track assemblies. The dimensions match the angles. The positioning pins engage with the appropriate notches of the carrier rail profile GN 646.3 or into the appropriate recesses of the groove. Also, a retaining rod with Ø12 can be attached to the mounting block.

How to order

GN 646.7-54-W

1 Length

2 Type

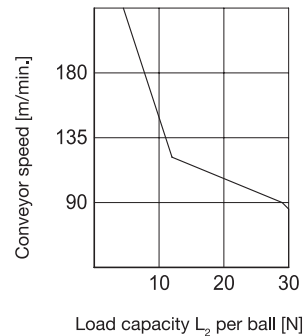
Load capacity of individual components

Roller track with:	Load L_1 per track Carrier rail profile making continuous contact	Load capacity L_2 per individual roller / ball
Roller track GN 646.1-270-15-PA	13330 N/m	200 N
Roller track GN 646.1-270-27-PA	13330 N/m	360 N
Roller track GN 646.1-270-15-TPU	1333 N/m	20 N
Roller track GN 646.1-270-27-TPU	5550 N/m	150 N
Ball track GN 646.2-270-POM	850 N/m	30 N

Within the loads given in the foregoing table, the permanent deformation or deflection of the roller / ball track is prevented, so the safe and proper function is guaranteed.

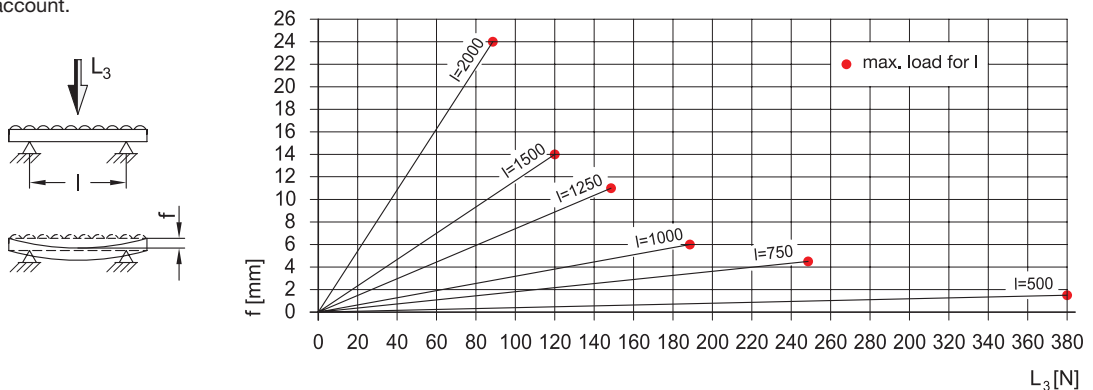
Conveyor speed

For ball tracks GN 646.2, conveyor speed must also be taken into account. If the speed is exceeded, the load capacity L_2 / per ball may be compromised.



Load and deflection

If carrier rail profiles GN 646.3 (→ page 38) rest on two points only, deformation (deflection) under load L_3 must be taken into account.



The diagram shows the different values for which neither a permanent deformation of the carrier profiles nor an impairment of the proper function of the roller track may be expected.

Otto Ganter GmbH & Co. KG

Triberger Straße 3
78120 Furtwangen
Germany

Tel. +49 7723 6507-0

Mail info@ganternorm.com

ganternorm.com